

Project Title: Fund for the development of disabled children

Project Goal: Improve quality of living of Children with Disabilities through enhances their access to education, health and skill Development service.

Purpose of the project:

- Strengthening capacity of parents, community people and civil society so that they can perform better for caring and protecting rights of children with Disabilities.
- To access service providing institutions, (Including health, education, and local government) and providing services for better inclusion of children with Disabilities.
- Enhance skill and capacity of potential children with disabilities for their better income opportunities.

Summary of the Project :

“Fund for the development of disabled children “ project would be implemented in the Four Upazilla (Islampur ,Dewangonj Melandha and Jamalpur Sader) under the Jamalpur district. A total **11,015 CWDs and others disadvantaged children** would be benefited from this project. The major components of this project are awareness & advocacy, education, Group formation and counseling intervention for the disabled children of the community. **WHO estimated there are 10% and about 16 million people are disabled in the country and the rate of prevalence is increasing rapidly. As more than 80% of our populations living in rural areas same proportion of disabled people are also living in the rural areas.**

The human rights situation of Bangladesh is a scenario of the violation of basic human rights, child rights, rights to their basic health, and the Convention for the Rights of the Children (CRC) etc. the instances of widespread human rights violation, especially the violation of women and child rights throughout the country. PROSHIPS intends to implement this project with the view to reduce prevalence of disability in the community, prevent violation of the child rights convention and to strengthen the literacy movement in the country through proper awareness, child education programs, preventive and rehabilitation program for the children with disability. Through this project, PROSHIPS also intends to achieve remarkable improvement in the ultimate living condition of the most disadvantaged, destitute and vulnerable children groups of the community. It is expected that the above-mentioned project could make a positive impact in the community for an effective development. PROSHIPS have got a long term plan for this project to make it sustainable and to extend it all over the district step by step.

This project is not a part of any other project. It is a complete and independent project for developing the most vulnerable children of the community. The other ongoing programs of PROSHIPS might benefit this project in many ways. This project should not be initiated from the very primitive stage. Because the initial steps of this project has already been completed by other ongoing programs. The field of actions has been created through a baseline survey and need assessment of the community in this regard by this time. Now the intervention is badly needed. The general situation of the project is also a matter of concern. Socio-economic and cultural condition of the project area is far below the optimum condition of living for human being. The people of the project areas are the victims of repeated erosion of rivers, natural calamities and

much other social deprivation and discrimination. The overall situation of the project areas is most inferior to the other parts of this district. The people are striving hard just for their survival in the mentioned areas. As a result living in this earth doesn't bear any significance among them other than distress, suppression, hardship and deprivation. The overall communication facility of the project areas is relatively better. Road and river communication is available all around the year. Irrespective of age, sex, ethnicity and physically challenged people of this project will address diversity by mobilizing the target audience in the rural community into diverse development activities.

Numbers of **11,015 Children with disabilities and others disadvantaged children** will be directly benefited from this project. As the disabled children and people will get different ability and skills they will be interested to contribute for their own and for others. They will be involved in various IGA activities. Adult Disabled Children will earn for themselves, economic burdens of the families will be reduced. Thus impact of this project will directly contribute poverty reduction.

What is the Issues , Problem or Challenges:

Bangladesh is one of the most underdeveloped, poor countries in the South East Asian region of the world. The socio-economic and political situation of the country does not even compare favorably with other nation-states in south Asia. Poverty, illiteracy, lack of health and other basic facilities mark our national life adversely. Besides all other major problems disability is going to be a matter of concern nowadays. WHO estimated there are 10% and about 16 million people are disabled in the country and the rate of prevalence is increasing rapidly. As more than 80% of our populations living in rural areas the same proportion of disabled people are also living in the rural areas.

The human rights situation of Bangladesh is a scenario of the violation of basic human rights, child rights, rights to their basic health, and the Convention for the Rights of the Children (CRC) etc. the instances of widespread human rights violation, especially the violation of women and child rights throughout the country. In order to check terrorism and human rights violation, the people of this country was accorded with a new law. Nevertheless, the human rights situation has still been descending in various aspects. Human rights violation through suppression and trafficking of women and children, sexual abuses, inhuman condition of child laborers, incidences of abduction and trafficking of children are increasing day by day. Violation of the Children rights /human rights in the community has now become as a threat to the normal social life. In addition, this is the time to intervention this issue before the situation is getting worst.

Problems of disability are deep rooted and complex in our Bangladesh. Here with Some major Problem and Challenges given bellow.

- Children with Disabilities (CWDs) is one of the most underprivileged, disadvantaged and vulnerable groups in the community.
- Almost always, they are looked down upon, neglected and deprived of most of their basic human rights.
- Hardcore poverty, illiteracy and lack of awareness have been increasing this number as a matter of national concern.

- From the experiences gained during the last decade and from the findings of the community studies, it has been revealed that the negative attitude of the community regarding the disabled persons.
- lack of proper awareness and facilities for the CDWs for their proper development,
- lack of scopes and facilities of education for disabled children of the rural community have significantly increased the miseries of the disabled persons in the community.
- Lack of awareness on the human rights, child rights, rights of the participation and accessibility of the disabled Children's in the community are mainly responsible for the present situation.
- Nearly in all classes the persons with disabilities are out of the development process by their families and communities due to their lack of knowledge about disability and potentials of the disabled persons.
- They are viewed by the community as a burden and source of stress for their families;
- They do not have access to existing Community school, public places and community activities.
- They and their families suffer from inferiority complex, which results in their exclusion from everyday life.

In Bangladesh, many NGOs are working for the development of disabled people. Most of the services are Institution based and situated in urban areas and those services are not adequate to cover the total urban disabled population. As more than 80% of our populations living in rural areas the same proportion of Disabled people are also living in the rural areas and these rural disabled people have no access to the existing services.

How will this Project Solve this Problems?

The Project “**Fund for the development of disabled children** “ is exclusively focused on Education and Development of the Children with Disabilities. The Implementing Organization will have trainers and resource persons on Disability and Development who will be contributing for attending the purpose of this project.

Appropriate care and development services can reverse the existing situation of most of the children with disabilities, and enable them to lead an independent life and contribute to their family and the nation. It is now recognized that the disabled people must be integrated into the mainstream of development process to maximize their development and to achieve their total self-reliance. As such, extensive programs on awareness and advocacy on disability and human rights issues, establish effective and updated information services and to undertake need-based action programs to cope up this situation are badly needed.

In the field of disability, the Community Based Rehabilitation (CBR) Approach is now globally recognized as the most appropriate approach. To bring the rural disabled people under development services community based approaches are found much effective in the rural areas. It is established that the disabled persons many potentials. If those potentials of the disabled persons could be explored and utilized properly in a planned way they can be able to achieve a better life and can contribute to their own and their community development. The disabled persons can contribute a lot if they are integrated to the mainstream development programs of the nation. Hence, the question is attitude, support and proper opportunity. Most of the disabled

persons could achieve different abilities through small support or assistance and can perform almost all activities of their daily living independently.

On the other hand, This project emphasizes on the Proper care and education of the disable children as to how they can be developed as a healthy and worthy generation for future. The most disadvantaged, disabled children of the community would also be rendered proper care, education and training so that they can grow up as productive resources of the community. Understanding of the above circumstances, PROSHIPS has taken up this issue with importance and has planned to implement this proposed project.

Potential Long term Impact .

At the end of “**Fund for the development of disabled children** “ project targeted audience would be aware and motivated disability attitudes among the community would be changed positively as the outcome of this project. People of the community would be well aware about disability, Its causes and possible means of Prevention and intervention. People would be interested to immunizing their children, attentive to proper nutrition and timely medication to prevent avoidable disablement.

Social Awareness towards Disability and CWDs be raised and rights of the children with Disabilities will be promoted in the Community. Students will be aware, motivated and supportive to the Development process of Children with Disabilities. Skill and knowledgeable Teachers, SMC members, will be available in the project working areas. CWDs enrolled in existing community educational Institutions.

A knowledgeable community group will be affiliated during the functioning of the project and assisted sustainable project. Adult Childs Advocacy Group Members will be skill and knowledgeable and they are involve directly project intervention. Adult CWDs are skilled on IGAs and they are contributing poverty reduction in their family and will be increase livelihoods conditions.

The project “**Fund for the development of disabled children**” is exclusively focused on Education and development of the Children with disabilities. Thus it could contribute towards poverty reduction in two ways. Firstly intents to convert disabled children from burden to resources. Through Proper Care and education a children with Disabilities can be brought up with optimum education and skills. It increases their competence and confidence to be a contributive part of the community. Usually the Children with Disabilities without education and proper intervention for treatment and rehabilitation are dependent on others and remain as a non productive burden of the family as well as of the society. They always involve their parents or some other people to accompany or taking care of them. Because of a disabled child other care givers are refrained from any other activities socio economic development. It impacts on the overall family economy adversely.

On the other hand, through this project disabled children will self dependent and productive. There will be no need for other career. As a result ,other care givers , as the disabled child both can be involved and contributes to the economic development of their own and of the community. Thus positively contribute to the reduction of overall poverty of the community. As we know the disabled children and people will get different ability. Through proper care and nurture they will be able to involve in varies IGA activities. Adult Disable Children will earn for themselves , economic burdens of the families will be reduced. Thus Long term impact of this project will directly contribute poverty reduction.

Project Activities

Project Title : Fund for the development of disabled children

A. HEALTH PROGRAM.

01. Provide Community Based Services (An Integrated Prevention and Rehabilitation Process) to the Children with Disabilities in the Community on Physiotherapy Services , Action on daily Living (ADL) Teaching , Speech training for increasing their living condition and can be able to achieve better life
02. Necessary Assistive Devices (15 pcs Wheel chair, 10 pcs special seating chair) would be given to deserving Children with Disabilities in the Community for increasing their mobility and communication..
03. Conduct and organize 50 (Fifty) school based Primary Eye diseases treatment camp and Hearing diseases treatment and Assessment camp for prevention disabilities in the community. Total 10,000 School Students will get opportunities on Primary eye disease treatment and Hearing assessment and medicine support from the organizing camp. They will be aware about disability, its cause and possible means of prevention and intervention.

B. EDUCATION PROGRAM.

01. Operating 10 (Ten) Learning Centre (Inclusive Education) with 250 Children (25 Children in each centre) support in Tuition and Session fess ,Education materials, Refreshment /Tiffin cost , School dress making cost for the Development of Children with Disabilities in the community Where there in no Govt. Primary School .
02. Operating 02 Special need School for All Type of 60 Children with Disabilities of the Community and Provide support Tuition fees, Session Fees, Examination fees, Education Materials, Transportation cost , Tiffin cost , School Dress with Shoes continuing education.
03. Running Mainstreaming Education program for Physical handicapped Children, Hearing Impaired Children, Low Intellectually Disable Children in the existing Educational institute in the Community.

C. CAPACITY BUILDING ORIENTATION/TRAINING

01. Conduct Capacity building /Vocational trade training and support Sewing maching (tailoring ,Handicraft)with adult Children with Disabilities and Care givers of Intellectually disable children ,they will trained and they can grow up as Productive resources in the community.

D. Orientation Program For Parents and School Teacher

01. Conduct and organize 12 (Twelve) Orientation to 360 Parents of Children with Disabilities (CWDS), School Teachers for Capacity and skill develop on disability management and child rights issues.

Project Activity Implementation Plan

Period: January To December 2014

Sl No	Name of activities /Particulars	Events /No.of Beneficiaries	1st Quarter	2nd Quarter	3 rd Quarter	4 th Quarter	Remarks
A	HEALTH PROGRAM						
A. 1	Provide Community Based Services (An Integrated Prevention and Rehabilitation Process) to the Children with Disabilities in the Community on Physiotherapy Services , Action on daily Living (ADL) Teaching , Speech training for increasing their living condition and can be able to achieve better life		On Going	On Going	On going	On going	
	Physiotherapy services Provide Regular Basis /ongoing	120 CWDS	√	√	√	√	
A. 2	Necessary Assitive Devices (15 pcs Wheel chair , 10 pcs special seating chair) would be given to desirving Children with Disabilities in the Community for increasing their mobility and communication .	15 wheel chair, 10 Special Seating Chair ,					
	15 wheel Chair Distribution	15 CWDs	√	√	√	√	
	10 Special Seating Chair Distribution	10 CWDs	√	√	√	√	
A. 3	Conduct and organize 50 (Fifty) school based Primary Eye diseases treatment camp and Hearing diseases treatment and Assessment camp for prevention disabilities in the community. Total 10,000 School Students will get opportunities on Primary eye disease treatment and Hearing assessment and medicine support from the organizing camp. They will be aware about disability, its cause and possible means of	50 events , per events 200 Children Total 10,000 Children	On Going	On Going	On going	On going	

	prevention and intervention.						
	Camp activities running and provide Doctors Honorarium	10,000	✓	✓	✓	✓	
	Medicine Purchase and supply to camp	10,000	✓	✓	✓	✓	
	Transportation cost Provide regularly	10,000	✓	✓	✓	✓	
B	EDUCATION PROGRAM						
B. 1	Inclusive Education Program for CWDs						
	Operating 10 (Ten) Learning Centre (Inclusive Education) with 250 Children support in Tuition and Session fess ,Education materials, Refreshment /Tiffin cost , School dress making cost for the Develoment of Children with Disabilities in the community Where there in no Govt. Primary School . 25 Children in each centre	25 Children in each Centres, 10 Centre,s 250 Children	on Going	On going	On going	On Going	
	Regular Basis Paid Tuition fee per month @BDT. 500 x12monthsx 250 Children	250 Children	✓	✓	✓	✓	
	Quarterly Basis paid Session fees one year @BDT. 1000 x 1 yr x 250 Children	250 Children	✓	✓	✓	✓	
	Quarterly Distribution Education Materials @BDT. 1500 per yr x 250 Children	250 Children	✓	✓	✓	✓	
	Regular Refreshment /Tiffin Cost @BDT. 10.00 per dayx 250 Children x235 Days	250 Children	✓	✓	✓	✓	
	Half yearly basis paid Examination fees @BDT.100 yrs x 250 Children	250 Children		✓		✓	
	School Dress and Shoes @BDT.850 x 250 Children in each year	250 Children	✓				

B. 2	Special Need Education for CWDs						
	Operating 02 Special need School for All Type of 60 Children with Disabilities of the Community and Provide support Tuition fees, Session Fees, Examination fees, Education Materials, Transportaion cost , tiffin cost , School Dress with Shoes continuing education	60 CWDs	On Going	on Going	On Going	On Going	
	Tuition Fee @BDT.500 per monthx12 month x60CWDs	60 CWDs	√	√	√	√	
	Session Fees @TK. 1500 per yrs x 60 CWDs	60 CWDs	√	√	√	√	
	ExaminationFee @BDT. 100 per yrs x 60 CWDS	60 CWDs		√		√	
	Education Materials @BDT. 800 per yr x 60 CWDs	60 CWDs	√	√	√	√	
	Transportation cost @BDT.50per dayx 235 Days x60 CWDS	60 CWDs	√	√	√	√	
	Tiffin cost @BDT.10 per day x 235 days x 60 CWDS	60 CWDs	√	√	√	√	
	School dress making and Shoes @BDT. 850 per students x60	60 CWDs	√				
B. 3	Mainstreaming Education For CWDs						
	Running Mainstreaming Education program for Physical handicapped Children, Hearing Impaired Children, Low Intellectually Disable Children in the existing Educational institute in the Community.	150 CWDs	On Going	on Going	On Going	On going	
	Education Materials @BDT.1000 per yrs x 150 CWDs		√	√	√	√	
	Scholarship @BDT. 1000 per yres x 150 CWDs		√	√	√	√	
	Coaching Fees @BDT. 1000 month x 12 month x 150 CWDs		√	√	√	√	
	Examination Fees @BDT.200 yrs x 150 Children		√	√	√	√	
C	CAPACITY BUILDING						

ORIENTATION/TRAINING							
C. 1	Conduct Capacity building /Vocational trade training (tailoring ,Handicraft)with adult Children with Disabilities and Care givers of Intellectually disable children ,they will trained and they can grow up as Productive resourses in the community.	200 Adult Children in each year					
	10 Adult Children Vocational training cost @BDT. 15000 x 25CWDs	10 Adult CWDs	√	√	√	√	
	10 Care givers for Intellectually disable children tailoring training cost @BDT.15000 per x 10 Care givers	10 Parents/ Care Givers	√	√	√	√	
D.	Orientation Program For Parents and School Teacher						
D. 1	Conduct and organize 12 (Twelve) Orientation to Parents of Children with Disabilities (CWDS), School Teachers for Capacity and skill develop on disability management and child rights issues.	360 Parenrs and School Teacher	03 orientati on	03 orientati on	03 orient ation	03 orient ation	
	Participants Transportation @BDT.200 per x 360 Participants		√	√	√	√	
	Participants Refreshment @BDT. 150 per participants x 360 Participants		√	√	√	√	
	Training /Orientation Venue @BDT. 1500 per orientation x 12 events		√	√	√	√	
	Banner @BDT. 500 per pcs x 12 orientation		√	√	√	√	
	Training Materials @BDT. 2500 x 12 orientation		√	√	√	√	

Donation Option For the Year : January 2014 to December 2014

Organization: Protibandhi Shishu Shiekkha O Paricharja Samity (PROSHIPS)

Project Title : Fund for the development of disabled children

Project Period : 05 Years (January-2014 to December 2018)

Sl No	Amount in US Dollar \$.1= BDT.77/-	Description	Target/ Character remaining
1	\$. 12	Disable Children 's get Physiotherapy services that will increase their living condition and ability will increase and can be achieve better life and per child Expenses will per month	120 disable Children
2	\$. 192	Sponsors Wheel-chair or Special Seating Chair for One physical handicapped Children	25 physical handicapped Children
3	\$. 940	Sponsor for Eye and Ear diseases Treatment and medicine support for 1000 Children in one Month and will aware about disability.	10,000 Disadvantaged Children
4	\$. 155	Sponsor for one Children in per year and Will get Pre-schooling educational and Learning opportunities with inclusive approach in the community for literate society.	250 Children
5	\$. 25	Sponsors educational expenses for "Special need education" of one child, one month	60 Special need Children
6	\$. 15	Sponsors mainstreaming educational expenses of Disable children in each children per month	150 Disable Children
7	\$. 195	Sponsor one Adult Disable Child for Tailoring Machine and training support ,will trained on Vocational trade and IGAs they can Grow up as Productive resources	20 Adult disable Child
8	\$. 10	Expenses in each Parents ,care givers of disable children and School teacher for one year will get training on Disability management	360 Parents , care givers and teacher

Details Budget

Organization .Name: Protibandhi Shishu Shiekkha O Paricharja Samity (PROSHIPS)

Project Title : Fund for the development of disabled children

Project Period : 05 Years (January-2014 to December 2018)

Budget For the Year : January 2014 to December 2014

	Name of activities /Particulars	Events /No.of Beneficiaries	Unit Cost Per yrs BDT	Total Amount in one yrs BDT	Convert in US Dollar \$1= BDT. 77	Remarks
A	HEALTH PROGRAM					
A.1	Provide Community Based Services (An Integrated Prevention and Rehabilitation Process) to the Children with Disabilities in the Community on Physiotherapy Services , Action on daily Living (ADL) Teaching , Speech training for increasing their living condition and can be able to achieve better life					
	Physiotherapy services Charges @BDT .200 per Visit x 52 visit in each yrs x 120 CWDs =	120 CWDs	7,200	1,248,000	16,208	-
	Sub Total			1,248,000	16,208	-
A.2	Necessary Assitive Devices (15 pcs Wheel chair , 10 pcs special seating chair) would be given to deserving Children with Disabilities in the Community for increasing their mobility and communication .	15 wheel chair, 10 Special Seating Chair ,				
	15 wheel Chair @BDT. 15,000 x 15 pcs = 225,000	15 CWDs	15,000	225,000	2,922	
	10 Special Seating Chair @BDT. 14,500 x 10 pcs = 145,000	10 CWDs	14,500	145,000	1,883	
	Sub Total			370,000	4,805	
A.3	Conduct and organize 50 (Fifty) school based Primary Eye diseases treatment camp and Hearing diseases treatment and Assessment camp for prevention disabilities in the community. Total 10,000 School Students will get	50 events , per events 200 Children Total 10,000 Children				

	opportunities on Primary eye disease treatment and Hearing assessment and medicine support from the organizing camp. They will be aware about disability, its cause and possible means of prevention and intervention.					
	Doctors Honorarium @BDT. 30 per children x 10,000 Children	10,000	30	300,000	3,897	
	Medicine Cost @BDT. 30 per Children x 10,000 Children	10,000	30	300,000	3,896	
	Transportation cost @BDT. 2500 per camp x 50 School/camp	10,000	13	125,000	1,623	
	Sub Total		73	725,000	9,416	
B	EDUCATION PROGRAM					
B.1	Inclusive Education Program for CWDs					
	Operating 10 (Ten) Learning Centre (Inclusive Education) with 250 Children support in Tuition and Session fess ,Education materials, Refreshment /Tiffin cost , School dress making cost for the Development of Children with Disabilities in the community.	25 Children in each Centre's, 10 Centre's 250 Children				
	Tuition fee per month @BDT. 500 x12monthsx 250 Children	250 Children	6000	1,500,000	19,481	
	Session fees one year @BDT. 1000 x 1 yr x 250 Children	250 Children	1000	250,000	3,247	
	Education Materials @BDT. 1500 per yr x 250 Children	250 Children	1500	375,000	4,870	
	Refreshment /Tiffin Cost @BDT. 10.00 per dayx 250 Children x235 Days	250 Children	2350	587,500	7,630	
	Examination fees @BDT.100 yrs x 250 Children	250 Children	100	25,000	324	
	School Dress and Shoes @BDT.850 x 250 Children in each year	250 Children	850	212,500	2760	
	Sub Total		11800	2,950,000	38,312	
B.2	Special Need Education for CWDs					

	Operating Special need School for All Type of 60 Children with Disabilities of the Community and Provide support Tuition fees, Session Fees, Examination fees, Education Materials, Transportation cost , Tiffin cost , School Dress with Shoes continuing education	60 CWDs	18,350			
	Tuition Fee @BDT.500 per monthx12 month x60CWDs	60 CWDs	6000	360,000	4,675	
	Session Fees @TK. 1500 per yrs x 60 CWDs	60 CWDs	1500	90,000	1,169	
	Examination Fee @BDT. 100 per yrs x 60 CWDS	60 CWDs	100	6,000	78	
	Education Materials @BDT. 800 per yr x 60 CWDs	60 CWDs	800	48,000	623	
	Transportation cost @BDT.50per day x 235 Days x60 CWDS	60 CWDs	11750	705,000	9,156	
	Tiffin cost @BDT.10 per day x 235 days x 60 CWDS	60 CWDs	2350	141,000	1,831	
	School dress making and Shoes @BDT. 850 per students x60	60 CWDs	850	51,000	663	
	Sub Total		23350	1,401,000	18,195	
B.3	Mainstreaming Education For CWDs					
	Running Mainstreaming Education program for Physical handicapped Children, Hearing Impaired Children, Low Intellectually Disable Children in the existing Educational institute in the Community.	150 CWDs				
	Education Materials @BDT.1000 per yrs x 150 CWDs		1000	150,000	1,948	
	Scholarship @BDT. 1000 per yres x 150 CWDs		1000	150,000	1,948	
	Coaching Fees @BDT. 1000 month x 12 month x 150 CWDs		12,000	1,800,000	23,377	
	Examination Fees @BDT.200 yrs x 150 Children		200	30,000	389	
	Sub Total		14200	2,130,000	27,662	
C	CAPACITY BUILDING ORIENTATION/TRAINING					

C.1	Conduct Capacity building /Vocational trade training (tailoring ,Handicraft)with adult Children with Disabilities and Care givers of Intellectually disable children ,they will trained and they can grow up as Productive resources in the community.	50 Adult Children in each year				
	10 Adult Children Vocational training cost @BDT. 15000 x 10 CWDs	10 Adult CWDs	15,000	150,000	1948	
	10 Care givers for Intellectually disable children tailoring training cost @BDT.15000 per x 10 Care givers	10 Care Givers	15,000	150,000	1948	
	Sub- total		15,000	300,000	3896	
D.	Orientation Program For Parents and School Teacher					
D.1	Conduct and organize 12 (Twelve) Orientation to Parents of Children with Disabilities (CWDS), School Teachers for Capacity and skill develop on disability management and child rights issues.	360 Parents and School Teacher				
	Participants Transportation @BDT.200 per x 360 Participants		200	72,000	935	
	Participants Refreshment @BDT. 150 per participants x 360 Participants		150	54,000	701	
	Training /Orientation Venue @BDT. 1500 per orientation x 12 events		1,500	18,000	234	
	Banner @BDT. 500 per pcs x 12 orientation		500	6,000	78	
	Training Materials @BDT. 2500 x 12 orientation		2,500	30,000	390	
	Sub Total		4,850	180,000	2338	
	Project Grand Total			9,304,000	120,832	

Annual Financial Plan/Business Plan

Organization: Protibandhi Shishu Shiekkha O Paricharja Samity (PROSHIPS)

Project Title : Fund for the development of disabled children

Project Period : 05 Years (January-2014 to December 2018)

Project Budget For the Year : January 2014 to December 2014

SI No	Name of activities /Particulars	Events /No.of Benefi.	Unit Cost Per yrs BDT	Total Amount in one yrs BDT	1st Quarter Jan- March - 2014	2nd Quart. April – June 2014	3 rd Quarter July- Sept. 2014	4rd Quarter Oct- Decem 14	Re marks
A	HEALTH PROGRAM								
A.1	Provide Community Based Services (An Integrated Prevention and Rehabilitation Process) to the Children with Disabilities in the Community on Physiotherapy Services , Action on daily Living (ADL) Teaching , Speech training for increasing their living condition and can be able to achieve better life								
	Physiotherapy services Charges @BDT .200 per Visit x 52 visit in each yrs x 120 CWDs =	120 CWDs	7,200	1,248,000	312,000	312,000	312000	312000	
	Sub Total			1,248,000	312,000	312,000	312000	312000	
	Convert in US Doller BDT.1=77			16,208	4,052	4,052	4,052	4,052	
A.2	Necessary Assistive Devices (15 pcs Wheel chair , 10 pcs special seating	15 wheel chair, 10 Special							

	chair) would be given to desirving Children with Disabilities in the Community for increasing their mobility and communication .	Seating Chair ,							
	15 wheel Chair @BDT. 15,000 x 15 pcs = 225,000	15 CWDs	15,000	225,000	56,250	56250	56250	56250	
	10 Special Seating Chair @BDT. 14,500 x 10 pcs = 145,000	10 CWDs	14,500	145,000	36,250	36250	36250	36250	
	Sub Total			370,000	92,500	92,500	92500	92500	
	Convert in US Doller \$.1= BDT 77			4,805	1,201	1,201	1,201	1,202	
A.3	Conduct and organize 50 (Fifty) school based Primary Eye diseases treatment camp and Hearing diseases treatment and Assessment camp for prevention disabilities in the community. Total 10,000 School Students will get opportunities on Primary eye disease treatment and Hearing assessment and medicine support from the organizing camp. They will be aware about disability, its cause and possible means of prevention and intervention.	50 events , per events 200 Childre n Total 10,000 Childre n							
	Doctors Honorarium	10,000	30	300,000	75,000	75,000	75000	75000	

	@BDT. 30 per children x 10,000 Children								
	Medicine Cost @BDT. 30 per Children x 10,000 Children	10,000	30	300,000	75,000	75,000	75000	75000	
	Transportation cost @BDT. 2500 per camp x 50 School/camp	10,000	13	125,000	31,250	31,250	31250	31250	
	Sub Total		73	725,000	181,250	181,250	181,250	181,250	
	Convert in US Doller \$.1= BDT 77			9,416	2,354	2,354	2,354	2,354	
B	EDUCATION PROGRAM								
B.1	Inclusive Education Program for CWDs								
	Operating 10 (Ten) Learning Centre (Inclusive Education) with 250 Children support in Tuition and Session fess ,Education materials, Refreshment /Tiffin cost , School dress making cost for the Development of Children with Disabilities in the community Where there in no Govt. Primary School .	25 Children in each Centre	10 Centre, 250 Children						
	Tuition fee per month @BDT. 500 x12monthsx 250 Children	250 Children	6000	1,500,000	375,000	375,000	375,000	375,000	
	Session fees one year @BDT. 1000 x 1 yr x 250 Children	250 Children	1000	250,000	62,500	62,500	62,500	62,500	
	Education Materials @BDT. 1500 per yr x 250 Children	250 Children	1500	375,000	93,750	93,750	93,750	93,750	

	Refreshment /Tiffin Cost @BDT. 10.00 per dayx 250 Children x235 Days	250 Children	2350	587,500	146,875	146,875	146,875	146,875	
	Examination fees @BDT.100 yrs x 250 Children	250 Children	100	25,000		12,500		12,500	
	School Dress and Shoes @BDT.850 x 250 Children in each year	250 Children	850	212,500	212,500				
	Sub Total		11800	2,950,000	890,625	690,625	678,125	690,625	
	Convert in US Doller \$.1= BDT 77			38,312	11,567	8,969	8,807	8,969	
B.2	Special Need Education for CWDs								
	Operating 02 Special need School for All Type of 60 Children with Disabilities of the Community and Provide support Tuition fees, Session Fees, Examination fees, Education Materials, Transportaion cost , tiffin cost , School Dress with Shoes continuing education	60 CWDs							
	Tuition Fee @BDT.500 per monthx12 month x60CWDs	60 CWDs	6000	360,000	90,000	90,000	90,000	90,000	
	Session Fees @TK. 1500 per yrs x 60 CWDs	60 CWDs	1500	90,000	22500	22,500	22,500	22,500	
	ExaminationFee @BDT. 100 per yrs x 60 CWDS	60 CWDs	100	6,000		3,000		3,000	
	Education Materials @BDT. 800 per yr x 60 CWDs	60 CWDs	800	48,000	12,000	12,000	12,000	12,000	

	Transportation cost @BDT.50per dayx 235 Days x60 CWDs	60 CWDs	11750	705,000	176,250	176,250	176,250	176,250	
	Tiffin cost @BDT.10 per day x 235 days x 60 CWDs	60 CWDs	2350	141,000	35,250	35,250	35,250	35,250	
	School dress making and Shoes @BDT. 850 per students x60	60 CWDs	850	51,000	51,000				
	Sub Total		23350	1,401,000	387,000	339,000	336,000	339,000	
	Convert in US Doller \$.1= BDT 77			18,195	5,026	4,403	4,363	4,403	
B.3	Mainstreaming Education For CWDs								
	Running Mainstreaming Education program for Physical handicapped Children, Hearing Impaired Children, Low Intellectually Disable Children in the existing Educational institute in the Community.	150 CWDs							
	Education Materials @BDT.1000 per yrs x 150 CWDs		1000	150,000	37,500	37,500	37,500	37,500	
	Scholarship @BDT. 1000 per yres x 150 CWDs		1000	150,000	37,500	37,500	37,500	37,500	
	Coaching Fees @BDT. 1000 month x 12 month x 150 CWDs		12,000	1,800,000	450,000	450,000	450,000	450,000	
	Examination Fees @BDT.200 yrs x 150 Children		200	30,000		15,000		15000	
	Sub Total		14200	2,130,000	525,000	540,000	525,000	540,000	
	Convert in US Doller \$.1= BDT 77			27,662	6,818	7,013	6,818	7,013	

C	CAPACITY BUILDING ORIENTATION/TRAINING								
C.1	Conduct Capacity building /Vocational trade training (tailoring ,Handicraft)with adult Children with Disabilities and Care givers of Intellectually disable children ,they will trained and they can grow up as Productive recourses in the community.	50 Adult Children in each year							
	25 Adult Children Vocational training cost @BDT. 15000 x 25CWDS	25 Adult CWDS	15,000	150,000	37500	37500	37500	37500	
	25 Care givers for Intellectually disable children tailoring training cost @BDT.15000 per x 25 Care givers	25 Care Givers	15,000	150,000	37500	37500	37500	37500	
	Sub- total		6,000	300,000	75000	75000	75000	75000	
	Convert in US Doller \$.1= BDT 77			3,896	974	974	974	974	
D.	Orientation Program For Parents and School Teacher								
D.1	Conduct and organize 12 (Twelve) Orientation to Parents of Children with Disabilities (CWDS), School Teachers for Capacity and skill develop on disability	360 Parents and School Teacher							

	management and child rights issues.								
	Participants Transportation @BDT.200 per x 360 Participants		200	72,000	18000	18000	18000	18000	
	Participants Refreshment @BDT. 150 per participants x 360 Participants		150	54,000	13500	13500	13500	13500	
	Training /Orientation Venue @BDT. 1500 per orientation x 12 events		1,500	18,000	4500	4500	4500	4500	
	Banner @BDT. 500 per pcs x 12 orientation		500	6,000	1500	1500	1500	1500	
	Training Materials @BDT. 2500 x 12 orientation		2,500	30,000	7500	7500	7500	7500	
	Sub Total		4,850	180,000	45000	45000	45000	45000	
	Convert in US Doller \$.1= BDT 77			2,338	585	584	585	584	
	Project Grand Total ,BDT			9,304,000	2,508,375	2275,375	2244,875	2275,375	
	Convert in US Doller Grand Total			120,832	32,577	29,550	29,154	29,551	

Organizational Profile of Proships

Name of the Organization : Protibandhi Shishu Shiekkha O Paricharja Samity (Proships)

Address:

Protibandhi Shishu Shiekkha O Paricharja Samity (Proships)

KachariPara, College Road

Upazilla- IslampurDist: Jamalpur

Brief history: Protibandhi Shishu Shiekkha O Paricharja Samity (Proships) is a Non government voluntary organization. **Proships** was established in 1998 with the initiate of group of young, educated, dedicated professional and social workers.

I am Mr.Rafiqul Islam had been works in organization of HICARE since 1987 as a teacher of the Deaf Children for speech and language development and Mrs.Begum Rokeya Sarder associated herself with the same profession. (Presently work as Project Director of Proships) When we went to our village on any excursion, occasion of any festival, Parents of many disable children desired meeting with us to have consultancy for their rehabilitation measure. We are accordingly provided them with support /cooperation but it was very small scaled due to our limitation. In this way as we are empathetically carry out them and we came to striving conscience to insure rights and opportunities of those disable children. Begum Rokeya Sarder motivation their family member about situation of the CWDs and form of organization and to take steps to run works in this respect.

Year of Establishment: 16th December 1998

Legal status of the Organization.

Proships is registered with Directorate of social services, Govt. of Bangladesh No- JA 00452 Date 09.06.1999 and it also registered NGO affairs bureau for foreign donation received, Registration No: 1730 Date - 14.08.2002. and its last renewal date:06th December 2012.

GOAL OF ORGANIZATION:

PROSHIPS Goal is to improve the ultimate socio-economic and cultural condition of the community through the development of the most disadvantaged, vulnerable people, women, children and the people with disabilities to ensure their equal rights and opportunities for participation in the mainstream development.

Vision of the Organization:

PROSHIPS has been working with the vision to promote development programs in the community to improve the overall socio-economic and cultural condition of the disable , most disadvantaged children , adolescent, of the community. Special emphasis is given on preventing disability, ensuring maternal child health, adolescent family life education and reproductive health education, restoration of child/ human rights and human resource development. PROSHIPS have been trying to implement action programs with the active involvement and participation of the community people. PROSHIPS aspire for a suppression free society with prosperity, peace and equity where all people could get proper opportunity and equal rights to develop.

Objectives Of the Organization :

- Implement programs to promote health, education and socio-economic development of the most disadvantaged, vulnerable groups and the disabled people;
- Undertake programs for prevention of disability in the community;
- Promote training and educational programs for prevention of disability and rehabilitation of the disabled people in the community
- Provide educational support and stipend to the talented disabled children and students;
- Conduct baseline survey for identification of the disabled persons and to find out the prevalence rate as well as common causes of disability in the community;
- Advocacy and lobbying with the policy makers, local authority and the elite groups to restore the rights of the disabled children and persons;
- Prepare and collect IEC materials on the basic facts of disability, disability prevention & intervention and disseminate the information among relevant groups;
- Exchange and sharing of experiences of intervention with the other NGOs and parties involved in disability activities;
- Create benevolent fund for the welfare of the disabled children and persons;
- Promote IGAs for economic self-reliance of the disabled persons or the families of the disabled persons in the community;
- Establish effective coordination mechanism between the national and international donor/support agencies and the agencies involved in disability movement;
- Promote programs for integrating the disabled persons in to mainstream development of the community;
- Provide emergency relief materials to disable, destitute and disadvantaged children and their families of any catastrophe.
- Publication of news letters to disseminate information on the day to day matters of the disable, destitute and disadvantaged children/people and issues related to their development.

Primary and Secondary Stakeholder:

Children with disabilities, different disadvantaged and affected children groups will be primary target beneficiaries and Students, Family members, community leaders, school teachers, religious leader, representative of the local authorities and other people will be the secondary beneficiaries.

Working Area :

Total numbers of population.

Name of Upazilla	Name of Union	No.of villages /Para	Population		Total Population
			Male	Female	
Islampur	Islampur sader	30	16587	15577	32,164
	Polabandha	22	11160	10577	21,737
	Patharshi	27	12309	11409	23,718
	Sub Total	79	40,056	37,563	77,619
Dewangonj	Dewangonj Sader	27	19586	19543	39129
	Chikajani	21	12336	12297	24633
	Chukaibari	23	11300	11252	22552
	Bahadurabad	29	16405	16466	32971
	Hatibhanga	14	9207	9067	18274
	Sub Total	111	68834	68625	137459
		150	108,890	106,188	2,15,078

Jamalpur Pur Paworashava	Jamalpur	12 ward			
	GrandTotal	162			

Working Area:

Islampur, Dewangonj and Melandha Upazilla an Jamalpur Powrashava Under the District of Jamalpur, Bangladesh

Networking members:

PROSHIPS has got the recognition of its relentless efforts for enlistment of the disabled people and got the membership of National forum of Organization Working with the Disabled (NFOWD) and partner NGO of National Foundation of Development of Disabled person (NFDDP) Ministry of Social welfare, Government of Bangladesh. It is also member organization of Centre for Disability in Development (CDD) and Bangladesh Shishu Adhiker Forum (BSAF)

Acknowledgement.

We are very much grateful to our partner /donors contributor for our implementing project activities through financial and kind support. Like: Manusher Janno Foundation, SLF Netherlands-DRRA, Centre for disability in Development (CDD) –Christ fall Blindness Mission (CBM) Jatio Protibandhi Unnoyan Foundation, Ministry of Social Welfare, Govt. of Bangladesh. We are also thankful Bangladesh Shishu Adhiker forum (BSAF) Centre for services information on disability (CSID) National Forum of working organization with disabled (NFOWD) for information services on Child rights and disability issues.

Acknowledgement on going Projects.

Name of Projects	Objectives	Name of Partners/ Donors
Development of the Children with disabilities through care and education	Strengthening capacity of parents, community people and civil society so that they can perform better for caring and protecting rights of children with Disabilities. To access service providing institutions, (Including health, education, and local government) for better inclusion of children with Disability and providing service. Enhance skill and capacity of potential children with disabilities for their better income opportunities.	Manusher Janno foundation
Promote Rights and Inclusion Through Community Based Rehabilitation for Liliene networks in Bangladesh (PRITCBRNP)	To Undertake rehabilitation measures for CWDs in the community. To prevent disability and secondary complication through integrated approach. To ensure educational rights of CWDs in the community.	SLF- Netherlands DRRA
Community based rehabilitation activities for	To support in educational material, assistive devices, Treatment referral support, support in IGAs, for people with	Jatio Protibandhi

development of the person with Disabilities.	Disabled.	Unnoyan Foundation, Ministry of Social Welfare, Govt.of Bangladesh.
Promotion of Human rights of Persons with Disabilities in Bangladesh	Promoting Rights through Facilitating opportunities and increasing accesses in to Mainstreaming of Persons with Disabilities	Centre for Disability in Development (CDD) & CBM

At present PROSHIPS is implementing programs on:

01. Community Awareness and advocacy Program:

- Conduct community awareness and advocacy program through discussion meeting , observe Day of Disability and, disseminate relevant information.
- Awareness campaign would be carried out on the importance and necessity of reducing the rate of disability and primary health in the community.
- Observation International /National day on Disability and child rights.
-

02. Primary health care Program./Integrated Rehabilitation Measure

- Door to door counseling, motivational campaign for rate of reduce disability.
- Provide cluster based / home based primary rehabilitation therapy service for their better improvement of CWDS.
- Conduct eye diseases treatment camp and ear diseases treatment for preventive disabilities..
- Operation /surgical treatment like as eye, clap-foot, clap-lip; clap-flat etc., to disable children for preventive and rehabilitation measures.
- Necessary assistive devices distribution in to disabled like as Hearing aid, wheel chair, crutch for their increase mobility and accessibility in the community.
-

03. Orientation and Training Program.

- Conduct orientation/training on disability and child rights issues with others stakeholder.
- Orientation /Training on IGAs for Disable person on changes of their livelihood .
- Conduct continued skill development training for PROSHIPS staff members
-

04. Education Program.

- Operating learning Centre for the Development of CWDS in the community.
- Integrating the physically disabled and mildly hearing impaired children, Low vision children and mild intellectually disable into the existing primary schools to promote education among the educable disabled children of the community.
- Operate Special need school for the all type of disabled children.

05. Networking, Coordination and Information Dissemination

- Establish strong coordination and communication with the others organizations for Inclusion of Govt safety net Program.

- Maintain network with different disability and child development agencies.
- Introduce proper referral services for the treatment, training and rehabilitation support of the persons with disability and destitute disadvantaged children.
- Published newsletter for child rights, disabilities information and contemporary development issues information dissemination.

06. Community Initiatives.

- Disability rights promotion Committee (DRPC)
- Self help group (SHGs)
- Child Rights Advocacy Forum(CRAF)
- CWDs Parents group

Program Implementation approach

PROSHIPS has been implementing its entire program through community based approach. It is consider community approach on handicap and disabilities (CAHD) established by Centre for disability in development (CDD). PROSHIPS consider community based rehabilitation (CBR) is the only effective approach that ensure development of the disable Children through optimum utilization of available resources of the community. Available resources in this regard included material resources, human resources and existing services and facilities of the communities.

Coordination and network

PROSHIPS is an active member of Center for Disability in Development (CDD). It is a full member of the National Forum of Organizations Working with the Disabled (NFOWD). It is active member of Bangladesh Shishu Adhikar Forum (BSAF).It has been maintaining coordination and functional network with the specialized groups as community leaders, local elite, social communicators and activists, specialist professional groups, traditional health practitioners, environmentalists and all people of goodwill.

ORGANIZATIONAL STRUCTURE OF PROSHIPS

PROSHIPS has got a three tier organizational structure. Those are ---

- The General Body
- The Executive Committee
- The Advisory Committee

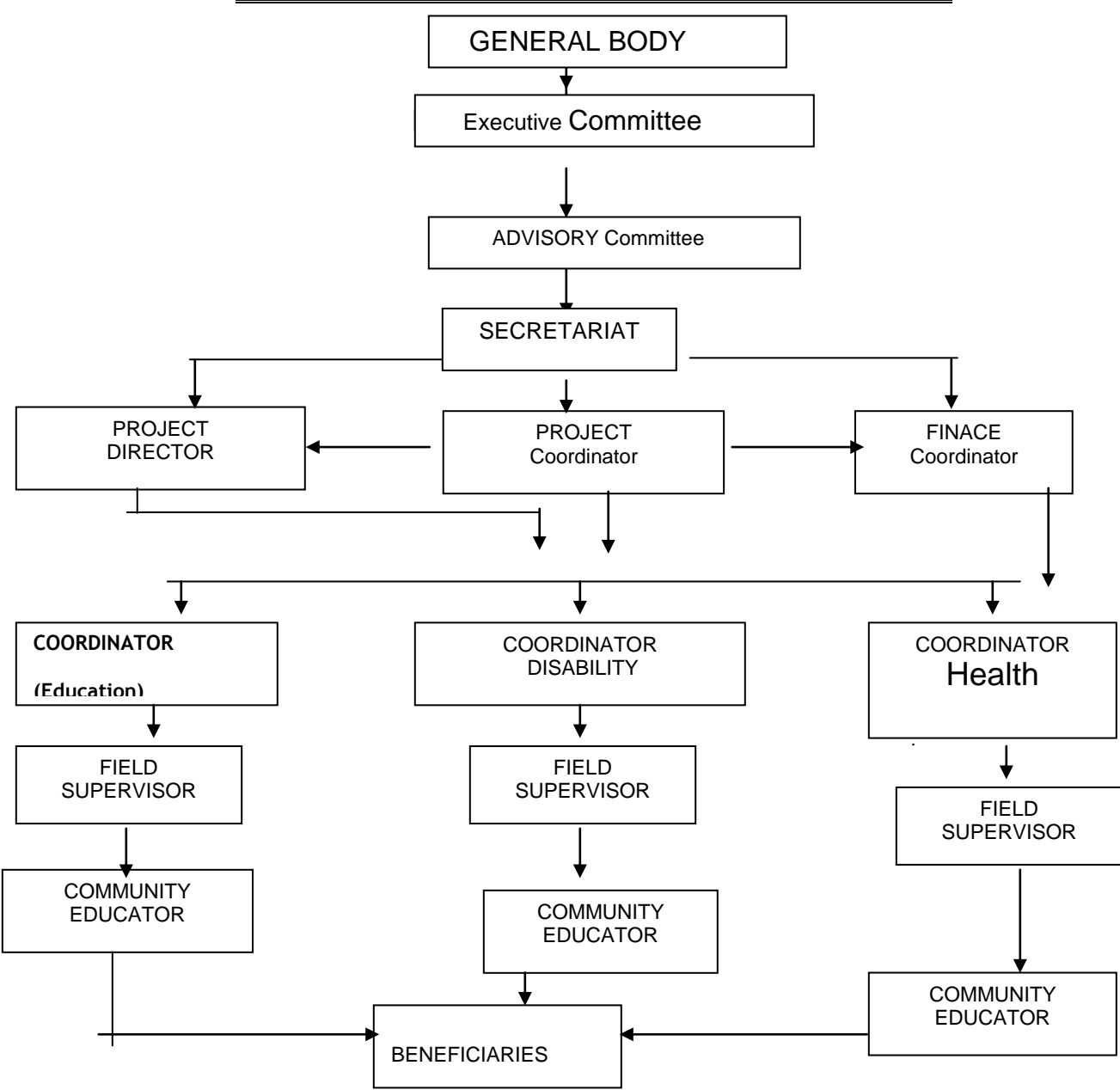
PROSHIPS comprise a 40 member's General body and 9 members Executive Committee (EC). The Executive Committee is elected for a two-year term by the general body in every alternative annual general meeting. The executive committee is solely responsible for all the activities of the organization. The Executive Committee selects an Advisory Committee comprising members, including the persons with varied expertise and knowledge in the relevant field, dedicated community organizers, local elites, members of the local authority and most popular and acceptable personalities of the community. Members of this Advisory Committee would contribute to PROSHIPS for its proper implementation of programs and survival.

The General Secretary is carrying out the responsibilities of program implementation, all administrative and support services of the PROSHIPS secretariat. The General Secretary of the organization is working as the ex-officio Member Secretary and the Executive Director of PROSHIPS Secretariat.

The Executive Director is responsible for day-to-day activities of the organization. The staff members provide their every support to the Executive Director and perform their activities with full responsibility. A well-motivated and well-coordinated team of staff is making their endeavors to contribute to the mainstream development of the community. Performances of all the staff members are evaluated systematically and periodically.

Organizational organ gram.

STRUCTURAL ORGANOGAM OF PROSHIPS



List of the Executive Committee Member of Proships (2011-2013)

Sl No	Name of Board Members	Designation	Profession	Address
01	Mr.Ashraf Hossain	Chairperson	SchoolTeacher	Kalikapur,Kacharipara,Dewangonj bazer ,Upazill- Dewangonj Dist: Jamalpur
02	Mr.Jahangir Alam	Vice Chairperson	Business	Vengura, Islampur, Jamalpur
03	Mr.Rafiqul Islam	General Secretary /Member Secretary	Social worker	Digheerpar ,Upazilla-Dewangonj, Dist. Jamalpur
04	Md.Mamunur Rashid	Assstt. Secretary	School Teacher	Shurerpar,Dhanger gar Islampur, Jamalpur
05	Md.Rafiqul Islam(ovi)	Treasurer	Businessman	Bhengura sarder Bari, Upazilla-Islampur. Dist-Jamalpur
06	SM Rejaul Karim	Executive Member	Businessman	Bhengura, Islampur, Jamalpur
07	Md.Ismail Hossain Visually Impaired	Executive Member	Agriculture	Pochabohela,Islampur Sader Union,Upazilla-Islampur,Jamalpur
08	Ms.Bedena Akhter Physical Handicap	Executive Member	Small Business	Pochabohela,Islampur Sader Union,Upazilla-Islampur,Jamalpur
09	Md.Nannu Mia Physical Handicap	Executive Member	Small Business	Nater Kanda,Islampur Dist: Jamalpur

Manpower of the Organization.

A Group of young and dedicated professionals of varying expertise have been managing the program implementation and technical areas of organization.(PROSHIPS).A team of well –experienced and well equipped Physiotherapist , and local consultant rendering their every supports for smooth implementation of PROSHIPS activities. The well motivated staff members provide all administrative support and services of the organization under the supervision of the Executive Director, the ex –officio member secretary of PROSHIPS.

Present staff Member of the Organization

A) Organizational /Core staffs , Mention their name & designation.

Sl	Name of Staffs	Designation	Working area	Duration	Remarks
01	Mr.Rafiqul islam	Chief Executive	Head office	From 1999	
02	BegumRokeya Sarder	Deputy Director	Head office	From 1999	
03	Mr.Ali Haider Babul	coordinator	Dewangonj & Islampur	From 2009	
04	Mrs.Tazmun Naher	Supervisor/CRT	Dewangonj	From 2008	
05	Mr. Shahidul Islam	Supervisor/CHDRP	Islampur	From 2010	
06	Mr.Shafiqul Islam	Supervisor	Islampur	From 1999	
07	Mrs.Mitali Akhter	Accounts assistant	Islampur	From 2005	
08	Mr.Fazlul Hoque	supervisor	Islampur	From 1999	
09	Mrs.Shammi Akhter	Community educator	Dewangonj	From	
10	Shiuly Akhter	Community Educator	Dewangonj	From 2007	
11	Razina Akhter	Community Educator	Dewangonj	From 2011	
12	Nureja Khatun	Care Taker	Dewangonj	From 2007	
13	Asia khatun	Care Taker	Islampur	From 2010	

B. Development of the Children with Disabilities through Care and Education Supported by Manusher Janno foundation

Sl	Name of Staffs	Designation	Working area	Duration	Remarks
01	Mr.Rafiqul islam	Executive Director	Head office	From 1999	
02	Mr.Hamidul Islam	Project coordinator	Head office	From 2009	
03	Mr.Rezaul karim	Accounts coordinator	Head office	from 2011	
04	Mr. Azharul Islam	Area coordinator	Islampur	from 2007	
05	Mr.Saiful Islam	Area coordinator	Dewangonj	from 2007	
06	Mahmudul Hassan Feroj	Coordinator (CRT)	Head Office	From 2007	
07	Tahamina khatun	Community facilitator	Dewangonj	From 2010	
08	Apporna Shaha	Community facilitator	Dewangonj	From-2010	
09	Ananan Shaha	Community facilitator	Dewangonj	From-2010	
10	Shafiqul Alam	Community facilitator	Islampur	From-2010	
11	Shahidur Rahaman	Community facilitator	Islampur	From- 2010	
12	Shaleha Nasrin Shelly	Community facilitator	Dewangonj	From-2010	
13	Nureja Khatun	Care Taker	Dewangonj	From 2007	Partial
14	Asia khatun	Care Taker	Islampur	From 2010	partial

C. Promotion of Human rights of Person with Disabilities in Bangladesh(PHRPBD)
Funded by CDD +CBM

Sl	Name of Staffs	Designation	Working area	Duration	Remarks
01	Mr.Rafiqul islam	Manager	Head office	From 2010	partial
02	Mrs. Mitali Akhter	Accountant	Dewangonj	From 2010	Partical
03	Mr.Habibur Rahaman	CDRP	Dewangonj	from 2010	
04	Rokeya Jannat	Community Mobilizer	Dewangonj	From-2010	

Bank Information:

All transaction of Organization proships Bank account : Protibandhi Shishu Shiekkha O Paricharja Samity (Proships) Mother account No:8710 Rupali Bank Ltd. Dharmakura Bazer Branch Upazilla- Islampur Dist: Jamalpur.

What we have Need:

We have need to well wishers and good friends, Development Cooperative agencies, Donor for the implementing activities of PROSHIPS for greater interest of Community as usual Children with Disabilities and Destitute and Disadvantaged and Marginalized groups.