

Save families of poverty by planting trees in Peru



Cultivating Social and
Environmental
Sustainability in Pichigua



Activity Agenda

- 1** *Overview of the Project*
- 2** Location and population
- 3** Budget
- 4** Main activities

Overview of the Project

District of Pichigua

- 28,800 hectares of Surface
- 3,870 amsl average altitude

Project data:

- Duration: 1 year (with a projection of 3 years)
- Number of families: 520
- Financing:
 - Pachamama Raymi: USD 100,000
 - Municipality of Pichigua: USD 34,198

Objective

The objective is to facilitate integral and sustainable prosperity in rural families. We will work with the families of the Pichigua district, with whom we will generate the same results obtained in all our projects:



Health & Nutrition

Families in good health and nutrition, with healthy homes.



Economy & Environment

Families that adopted productive practices, recovering natural resources and improving in a tangible and sustainable way their family income in the short term through several businesses, and in the long term through resfirming.

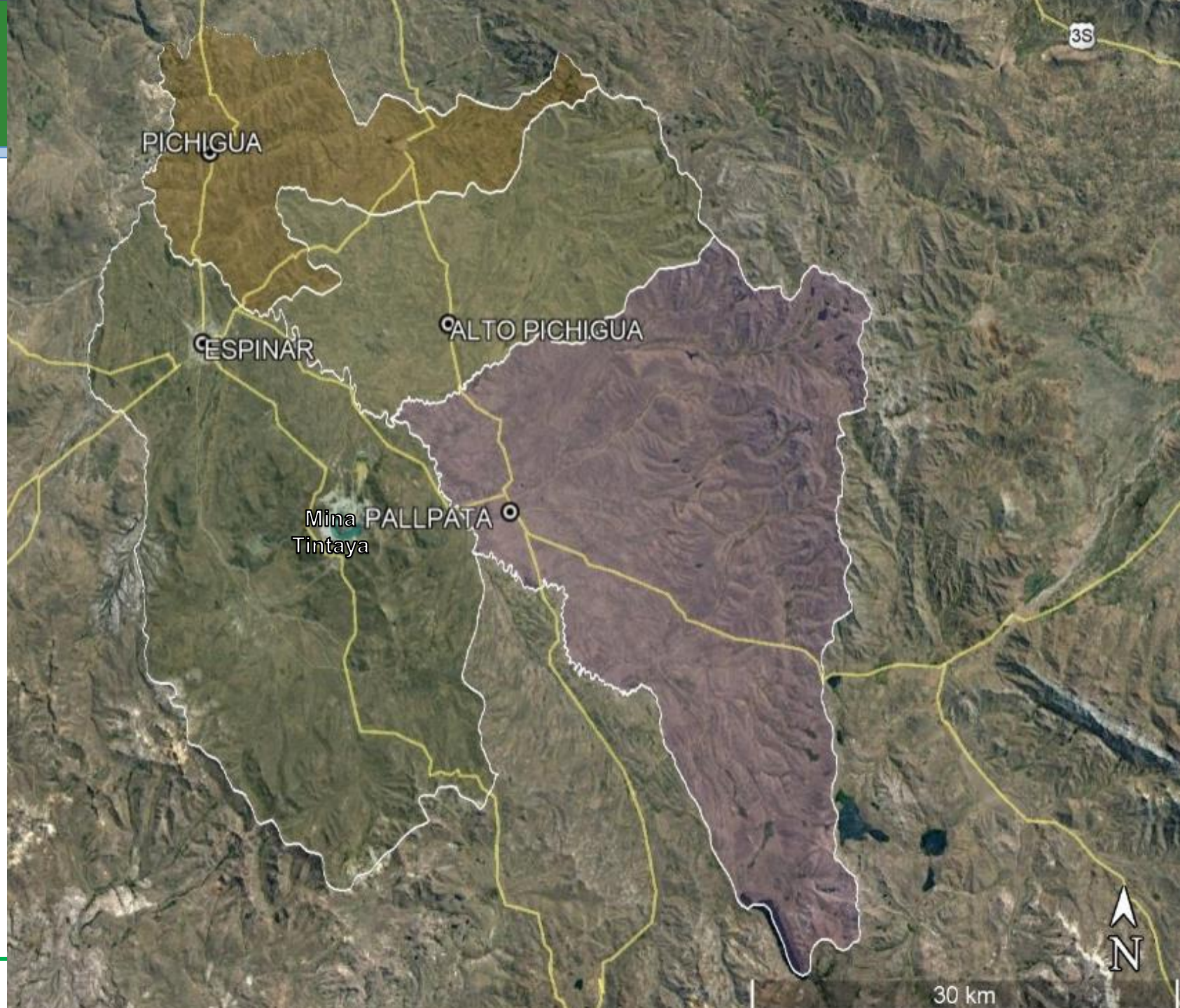


Activity Agenda

- 1 Overview of the Project
- 2 *Location and population*
- 3 Budget
- 4 Main activities

Pichigua District

- The project will be executed in the Pichigua district in the vicinity of the Tintaya Mine. In this context, it is very important that the results are evident in the very short term (in the first year) and are deepened during the following two years.
- The positive results demonstrated in the district of Pichigua will allow motivation and interest in the families of the neighboring districts such as Alto Pichigua, Pallpata and Espinar.





PICHIGUA

Google Earth

Image © 2018 CNES / Airbus
© 2018 Google
Image © 2018 DigitalGlobe

130

Map of Pichigua District



7 km

Population

The district of Pichigua has around 1,150 homes of which more than 70% are extremely poor.

N°	Communities	Number of families
1	Alccasana	100
2	Chimpa Alccasana	30
3	Moro Alccasana	80
4	Sillota	90
5	Chani Pichigua	80
6	Ccahuaya Baja	40
7	Nueva Esperanza	100
	TOTAL	520



Activity Agenda

- 1 Overview of the Project
- 2 Location and population
- 3 **Budget**
- 4 Main activities

Budget

		Total	Municipalidad Distrital	Pachamama Raymi
	Description	S/.	S/.	S/.
Inter-learning	Subtotal Inter-learning	183,550	44,800	138,750
	Farmers' fees	96,000	31,200	64,800
	Expenses of the peasants	26,400	0	26,400
	Internships and teaching materials	35,740	10,000	25,740
	Transportation and field offices	25,410	3,600	21,810
Contests and motivators	Sub-total Contests and motivators	182,322	66,000	116,322
	Forestation	75,062	50,000	25,062
Monitoring and evaluation	Supervision, monitoring and evaluation	17,100	0	17,100
Administration	Central office	47,628	0	47,628
	Total in PEN	434,800	110,800	324,000
		100.00%	25.50%	74.50%
	Total in USD	134,198	34,198	100,000

Activity Agenda

- 1 Overview of the Project
- 2 Location and population
- 3 Budget
- 4 ***Main activities***

Project start

- We started our project with a typical celebration of the beginning of tasks called "Pago a la Tierra", an ancestral celebration in which the mother is asked for permission, protection and good energies for the work that is going to be done.
- In this activity, the largest number of inhabitants participate together with their municipal and communal authorities.
- It is very important to respect and adapt to the customs and traditions of the population, thus generating the bonds of trust and respect. "



Project start



Current Situation

Throughout the district we have found very few pine trees, and as many of Colle and Queuña. The degradation is remarkable in this area.



Problem to which we face: Plant over 4,000 meters above sea level and have unfavorable soils



The municipality and the families have proposed to change this reality



Breaking distrust in reforestation

Large reforestation projects led by the regional and provincial government failed, mainly due to lack of care and community agreements. This generated enormous distrust in the population for afforestation.

We carry optimism and motivate families to plant. For this, we took 20 thousand pines and we started the planting work.





Pine plantation



Housing improvement



Sowing and pasture cultivation throughout the district



Development of community tree nurseries

We will produce 300 thousand seedlings in this communal nursery. Before it was an abandoned pond for oxidation of sewage.



Development of community tree nurseries





Pachamama Raymi
Pavitos Street 567 Cusco - Peru
Phone +51 84 236540
www.pachamamaraymi.org

