



2018 ANNUAL REPORT

Zimbabwe | Botswana | Zambia



Community Development through Responsible Tourism



CONTENTS:

About the African Bush Camps Foundation	03
From The Board	04
How the Foundation Works	06
2018 Region Activity Summaries	07
- Chobe Enclave, BW	08
- Khwai Community Area, BW	10
- Maunga Community, ZM	11
- Hwange National Park, ZW	13
- Mola Community, ZW	17
Marketing	19
Digital Comms	21
Fundraising & Donations	22
2019 Fundraising Goals	
- Livingstone, ZM	23
- Dete, ZW	24
- Mola, ZW	26
- Khwai, BW	27
Contact	28



CONSERVATION



EDUCATION



COMMUNITY
EMPOWERMENT

About AFRICAN BUSH CAMPS FOUNDATION

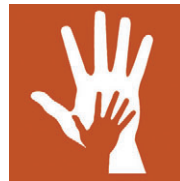
The African Bush Camps Foundation is a registered not-for-profit organization that began operating in 2006 with the vision of creating opportunities that empower rural communities located in vulnerable wildlife areas.

The Foundation's mission is to partner with these communities to improve their quality of life and achieve long-term conservation through programs focusing on education, conservation and community empowerment (as of 2019 Community Infrastructure lies within the Empowerment Pillar):



Education

Scholarships for both community members and staff as well as vocational skills training for targeted individuals and communities.



Community Empowerment

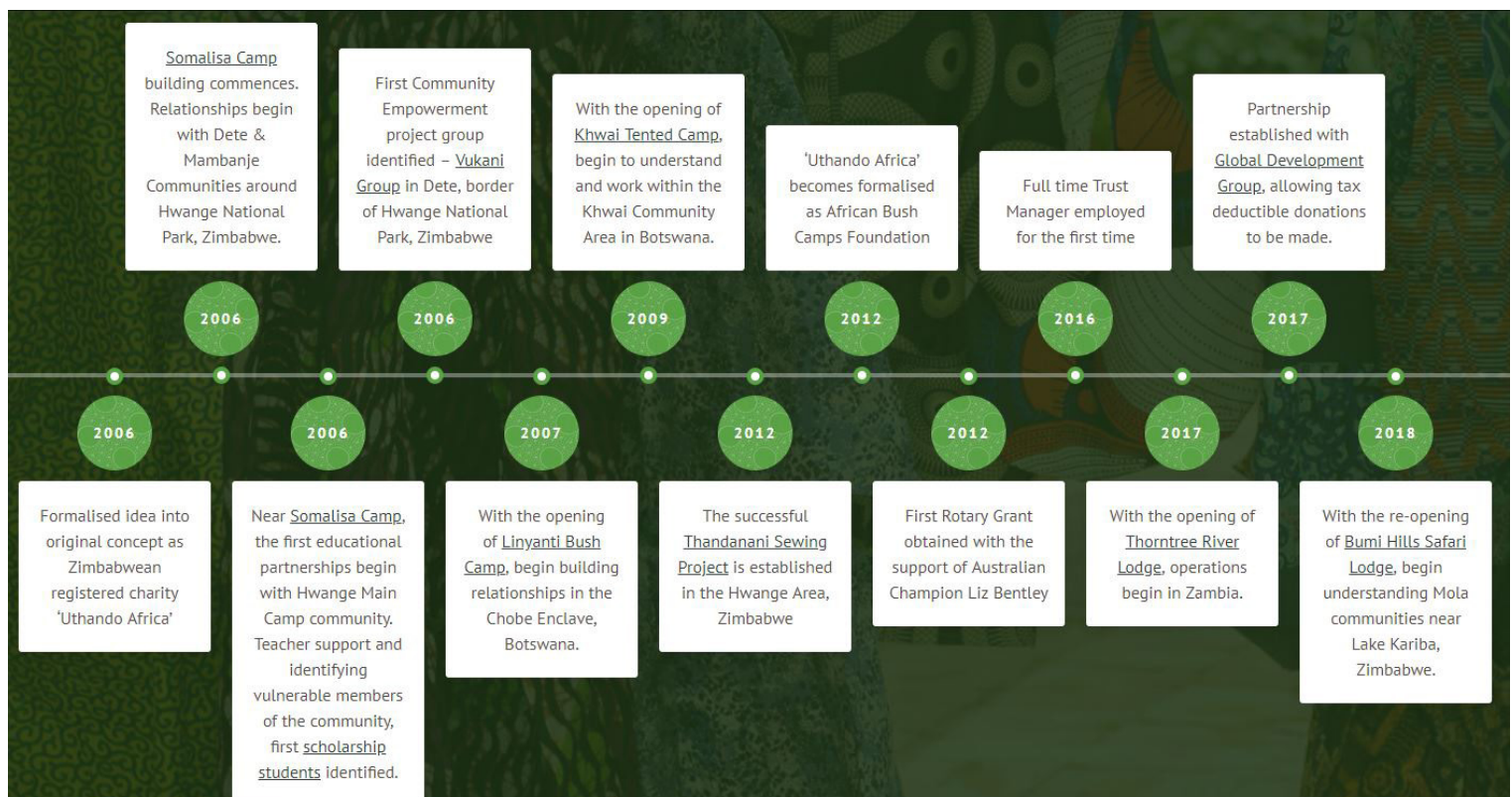
Generating income for community, households, alternative livelihood sources and facilitating social events.



Conservation

Resolving human-wildlife conflicts, preserving wildlife assets (reducing poaching and deforestation), supporting National Parks institutions, and engaging the youth in communities to raise awareness of conservation.

Tourism, Community & Conservation are all interconnected by directly linking these benefits to tourism these communities learn to positively value wildlife and nature as resources for improving their wellbeing.



The African Bush Camps Foundation (ABCF) was formed in 2006 as Uthando Africa Trust which was then registered as a Private Voluntary Organisation in September 2018. Twelve years on, and ABCF has a lot to celebrate – a holistic journey, with a regenerative ambition, providing rewards to all parts of the ecosystem. ABC (African Bush Camps), as the business, has remained committed to protecting a very vulnerable system – both wildlife and human communities – with building long-term relationships at the top of the agenda. Since November 2016, the ABC Foundation has been guided by a strategic plan that focused on vulnerable communities, improving access to education, building community empowerment, strengthening community infrastructure and conserving the environment. As part of this process, the foundation drove four organisational strategies:

1. Strengthening the capacity of the institution,
2. Increasing its visibility,
3. Building its resource base and
4. Strengthening partnerships and alliances

Since its inception, ABCF has executed 73 projects, of which 42 are still active. The combined workforce of the business (ABC) and the Foundation has grown from 160 employees to over 300 for the whole group. Forty percent of the Foundation's revenue has been externally sourced, which exceeded expectations, but also increased the complexity of the organization. The ABC guides and the foundation's team provide the institution with



October 2018: A gathering of members from ABC & ABCF to define a 2019-21 strategy.

a powerful opportunity to connect guests, camps and communities.

Key decisions for the business and foundation's operations require that a well thought out organisational structure and supporting operational systems be put in place to support forward planning and respond to the changing operational environment. The business and the foundation are intertwined – like a helix – with one nucleus guiding both institutions.

A review of the 2019 strategy was initiated in August 2018. This review aimed at developing a new strategic plan based on a deliberate, inclusive and facilitated process. The purpose of the review was to provide "an opportunity to come up for air, reflect on who we are and where we are going. We can't do this without

caring – for the people and for the environment we work in". From this, an updated strategy was formed for 2019 – 2021. The theme for the next three years, 'more focus, more impact', reflects the foundation's intentions to consolidate the growth made in the last ten years, and narrow the focus to ensure multiplied impact. More specifically, ABCF's purpose is to generate sustainable income for communities while preserving the environment. To achieve this, ABCF will be implementing programme interventions that result in responsible stewardship of the land, ensuring that both the business and the foundation make a positive impact on the wildlife, environment and its other natural resources. The strategy is graphically depicted below:



Creating sustainable human and wildlife interaction for future generations in Southern Africa by 2030.

'MORE FOCUS, MORE IMPACT'



To promote the harmonious coexistence of human and wildlife in the environment.



ASPIRATIONS:

To connect the benefits of tourism operations in supporting the livelihoods of communities living near and around national parks to achieve long-term conservation.



To become relevant to all employees to support the foundation's business and development principles.

KEY STRATEGIC AREAS:



EDUCATION

Improve access to education



COMMUNITY EMPOWERMENT

Empower communities



CONSERVATION

Improve the ecosystem, biodiversity and co-existence between human and wildlife.

ENABLERS

Raise funding to match ABC investments (from bed night revenue), bring in an additional **one million dollars** of external funding in the **next two years**

Capacitate the foundation to be effective in delivery by adapting a relevant organisational structure for its governance, management and operations.

Provide compelling evidence of impact, measuring each project and each camp

Craft a persuasive message to educate guests, staff, communities and authorities to join the 'call-to-action' to protect the ecosystem.

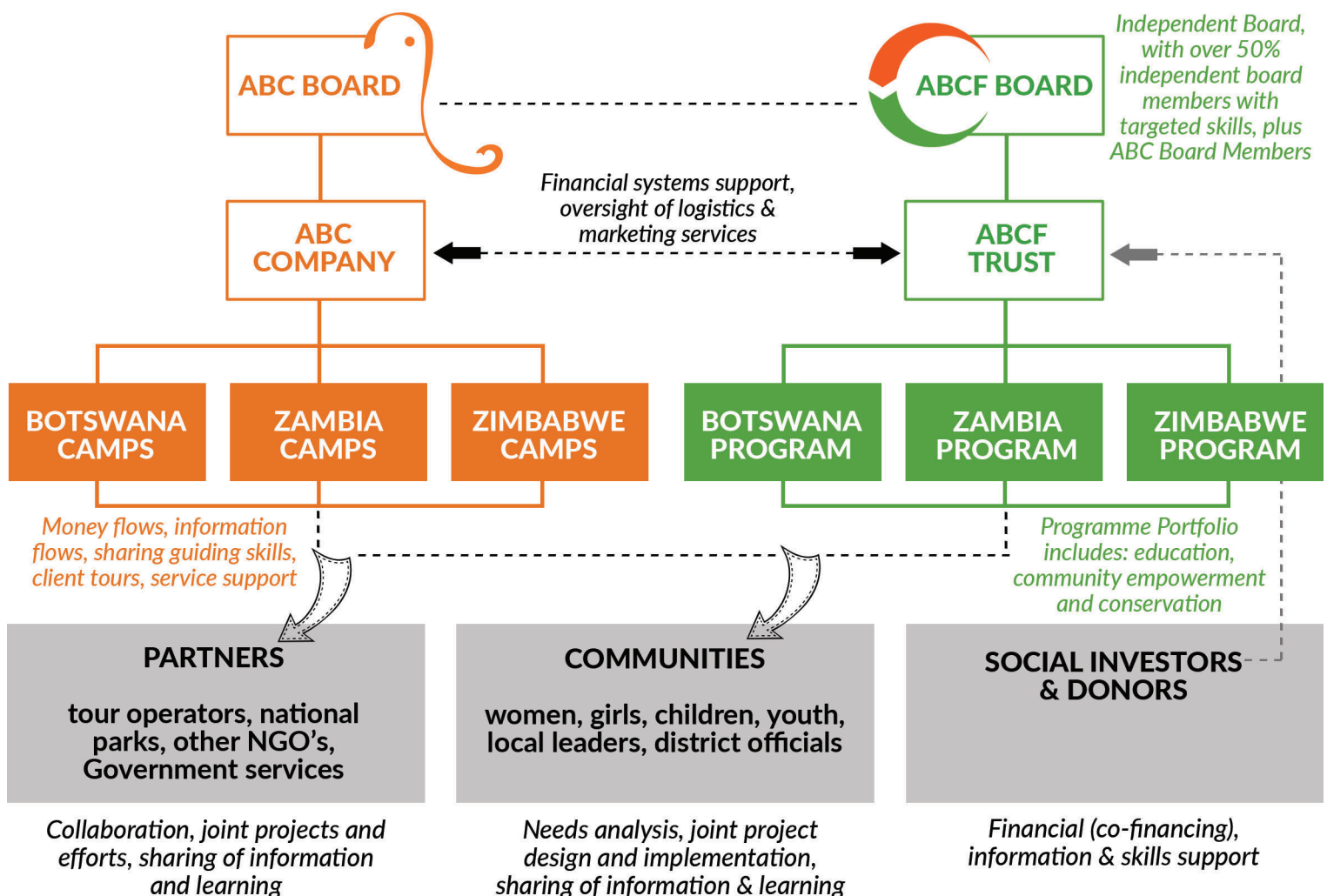
HOW THE FOUNDATION WORKS

ABCF's operation is presented in the figure below. While the company and the trust operate side-by-side with careful synergies in place, the trust is governed by an independent board with more than 50% of the members being non-executive and specifically appointed for their unique skills and or experience in selected sectors for the overall business. ABC is a private company, with shareholders, managers and staff, designed to give a unique ecosystem experience,

in some of Africa's most beautiful wilderness. It works through local and international agents, relies on local service providers and trains and employs local people. ABCF operates alongside and in synergy with the ABC business. The model facilitates contributions for community development from guests of ABC and through the monthly company donations of bed night payments. ABC also provides the foundation with support in the form of financial systems

and oversight, marketing and logistics. In return, the foundation provides ABC guests with opportunities for emersion into the surrounding communities, building an appreciation of the ecosystem, culture and challenges, magnifying the guest experience. The foundation collaborates with partners, communities and donors to develop and implement interventions that build community assets and protect the biosphere.

Through our multi-faceted partnership with African Bush Camps, each and every bed night in any one camp donates US\$10 to the African Bush Camps Foundation covering administrative overheads, allowing the foundation to make sure that 100% of each and every donation goes directly to the project it is intended for.



2018 REGIONAL ACTIVITY SUMMARIES

Committed to sustainable development, through creating opportunities that empower rural communities located in vulnerable wildlife areas in Botswana, Zambia and Zimbabwe.

- Chobe Enclave, BW
- Khwai Community Area, BW
- Maunga Community, ZM
- Hwange National Park, ZW
- Mola Community, ZW



Chobe Enclave

BOTSWANA

Having begun to establish relationships with communities in this region in 2007, projects with communities in this area have had some time to grow. Progress made in 2019 in supporting schools like Kachikau Primary School, with a paving project to enable the school's disability unit and Mabele Pre-school, with resources for their sick corner and other educational tools. Under the Community Empowerment focus area, establishing a new sewing project and continued work with the Vuche Vuche Craft project were features. Work is needed in this area for communities to gain better access to markets. During 2018 community based events proved successful in building local activities.



Chobe Enclave, BW COMMUNITY EMPOWERMENT



METSIMAHURA ASSOCIATION - KACHIKAU SEWING PROJECT

This income generating project made great progress in the 2nd year, with leaders being elected and professional industrial sewing workshops conducted in the village. Business development training and textile materials were also received, meaning that the group started developing products for sale to the surrounding community.

VUCHE VUCHE BASKET CRAFT COOPERATIVE

With marketing and sales identified as a challenge for Vuche Vuche a stall was secured at Kasane International Airport and shelving was sourced by ABCF for the display of weaved products. The social support, teamwork and the tending of a maize garden on the premises also help to support the group.

COMMUNITY EVENTS

- Chobe Independence Sports Tournament (14th Sept, 183 children & 22 coaches)
- Chobe 10km Fun Run (5th May, 6 local government departments and NGO's involved)



PARAKARUNGU PRIMARY SCHOOL CHICKEN PROJECT

It has been a difficult year for this project due to; lack of transportation, delays in order delivery, heavy rains/floods and staff reshuffling. It was resolved to initiate an alternative crop garden project to raise funds for chick transportation. Unfortunately the yield was lost due to rains and floods followed by dry weather. As such only sales of \$20 were realized.



MABALE PRIMARY SCHOOL CLASS ZERO

Identified as an opportunity to improve education resources. ABC GM & Ops Managers have committed to assist with donations which were made in November. Donations included sick corner mattresses & blankets, playmats, visual educational tools & graduation gowns (purchased from Metsimahura Sewing Project).



ENVIRONMENTAL EDUCATION

Department of Environmental Affairs (DEA) Kasane Office & Ministry of Basic Education (MoBE) accepted initiative to establish committee for National Environmental Education in Chobe (Conservation Clubs). This involves various key stakeholders working towards environmental education and conservation



KACHIKAU PRIMARY SCHOOL SPECIAL EDUCATION UNIT

Paving for passage ways and assembly area complete in April 2018. As such, differently abled children can now move around school easier. The Special Needs Unit received toiletry packages from Christmas gift campaign. The School also attended the National Special Olympics in Maun in September.

Khwai Community Area

BOTSWANA

With the establishment of the Khwai Tented Camp adjacent to the Northern Moremi Game Reserve in 2012, the foundation's programmes are still in early stages of development. A long needs assessment and relationship forging process has taken place in this area. In 2018 an opportunity was highlighted by the community to develop a cultural village to provide a safe, collaborative space whilst educating and showcasing local cultures and customs. This was the focus of activity in 2018 and we are looking into holistic ways of contributing to the local Khwai community and partnering with community leaders to ascertain the best way forward.



Khwai Community Area, BW **COMMUNITY EMPOWERMENT**



TANE KO TEEMAHANE WOMEN'S ASSOCIATION - KHWAI CULTURAL VILLAGE

Funded & formally introduced to the Khwai village leadership in February. (US\$ 2,680 was contributed by ABCF). Construction has been the main challenge as the raw materials are gathered in the bush and must be dry and mature. The project aims to raise funds through entertaining guests and hosting cultural events.

KHWAI INDEPENDENCE SPORTS TOURNAMENT

The plan was to engage neighbouring villages (Mababe & Sankoyo) to enter the tournament. An organizing committee was formed with representatives from various community teams & trusts. In addition to soccer, the event planned to showcase cultural performances and display cultural artefacts. Unfortunately the event didn't go ahead due to village development committees (VDC) & trusts being unable to cover their part of the budget. The event has been postponed to 2019 allowing ample time for arrangements to be made.

Maunga Community

ZAMBIA

With the establishment of Thorntree River Lodge as part of the ABC portfolio in 2017, the foundation's programmes in this area are in early stages. We are looking into holistic ways of contributing to the local Maunga Village and have partnered with community leaders to plan the most effective initiatives to partners going forward. A major focus for 2018 was to complete the construction of a building to serve as a health centre for the community, along with the establishment of a Conservation Club at the school and increased general support for the school and students.



Maunga Community, ZM COMMUNITY EMPOWERMENT



MAUNGA HEALTH CENTRE

With a brand new relationship being developed with this community, partnering to complete this building to serve as a health centre was identified as a priority by the community. Members contributed voluntary labour and support to help complete the structure before the rains in December. Funds are still owed to contractors and equipment & furnishings are needed, but it will greatly benefit the 483 households in Maunga.

ABC GUEST VISITS & DONATIONS



Beginning in June, guest visits have resulted in generous donations (including US\$3,500 from the very first guests, the Gleeson family)



SUPPORT OF LOCAL ENTREPRENEURS

Mr. Mulonda, a local carpenter and blacksmith has received increased exposure and business due to increased activity in the village, including demonstrations and merchandise sold to ABC guests.



MATERIAL AND EQUIPMENT SPONSORSHIP AT MAUNGA PRIMARY SCHOOL

ABCF activities in 2018 have been a catalyst for school attendance, showing tremendous increases. Pupils are starting to have more hope for their schooling future. Students now have working stationary & books and access to bicycles for students living long distances away.



SCHOLARSHIPS AT MAUNGA PRIMARY SCHOOL

Five students were offered scholarships as part of a Primary School Scholarships Program. These students were identified as vulnerable of dropping out due to family finances, but showed interest and potential.



CONSERVATION CLUB SET UP

A Conservation Club was set up to promote practical, fun and engaging environmental education activities. Tree planting, wildlife education, permaculture techniques, water conservation, etc. all form part of these activities.



Hwange National Park

ZIMBABWE

Having begun building relationships since 2006, our programmes are the most established in the areas in and around Hwange National Park. 2018 saw the continued success of human-wildlife conflict mitigation through the Mobile Cattle Boma project and the residual Animal Health component, meaning all cattle in the Mambanje Village were vaccinated. Continuing in the vein of supporting holistic livestock and land management practices we saw the introduction of a multi-purpose Goats for Education project, addressing access to education limits within the community too. This, on top of 3 school refurbishment projects, continued scholarships programs, gardens, orchards, nutrition programs, textbook & solar light provisions and a range of community events mean we can start to see our vision for sustainable tourism starting to come to life.



Hwange National Park, ZW COMMUNITY INFRASTRUCTURE



FURNITURE AT UMTSHIBI PRE-SCHOOL

A refurbishment, age appropriate furniture and Montessori learning equipment installed for the families of Park's Rangers living within Hwange National Park's borders.



REFURBISHED DETEMA SCIENCE LAB

Refurbished Detema Science Lab (furniture, water & gas, projector & board). Improved quality can translate to High School status (pending application).



SECURED FUNDING FOR HWANGE SKILLS HUB INITIATIVE

Secured funding, with the Klein Family Foundation, for the development of a Skills Hub to be developed. A collaboration between 7 government agencies, 6 community organisations and 5 schools for skills training to empower youth and young adults in Dete & surrounds.

FUNDRAISING EFFORTS FOR SATELLITE HIGH SCHOOL IN MAMBANJE

Acquired partial funding from Elefence International to help construct two classroom blocks and reduce the school drop outs in Mambanje.



PLAY CENTRES AT UMTSHIBI PRE-SCHOOL & MAMBANJE PRIMARY

Contributing to the psycho-social support & development of infant minds. Teachers are also attending Montessori training.



TEXT BOOKS AND SOLAR LIGHTING SPONSORSHIP AT MAMBANJE PRIMARY

Grade 4 -7 given solar lighting to increase study time (donated by Mary Jane Tully). New curriculum textbooks have also been provided by Heathrow Terminal 4 staff.



FEEDING PROGRAMME, SCHOLARSHIPS, TEACHER SUPPORT INCREASING ATTENDANCE

Scholarships for 107 OVC primary students at Main Camp & Mambanje. Healthy lunches for 144 Mambanje students (Medel Family & Judy Burke). Teacher support, caps with school branding logos & photos for students to take home (Mike Lyons) contributed to general pride of the school.



HIGH SCHOOL & TERTIARY SCHOLARSHIPS & LIFE SKILLS

15 scholarships supported through individual sponsors (Medel Family). 9 students supported through ABC sales "Community Focus Project" initiative. 9 National Exam candidates (7 for O-level & 2 for A-level).



CONSERVATION CLUB SCHOLARSHIPS

Scholarship competition for most nurtured fruit tree over past year. One full and two partial scholarship prizes awarded after great results.



GOATS FOR EDUCATION

Total of 17 female goats, with 6 having reproduced & 3 lost to predation.



WORLD ENVIRONMENT & NATIONAL TREE PLANTING DAYS

Are highlights for Conservation Clubs & PDC Nature Corner competitions. Mambanje Primary School has been the winner for two consecutive years, of the 16 primary schools in the Mabale and Dete cluster. Tree planting (130 in 2018) and plastic clean-ups (eco-bricking) are the focus.



MAMBANJE COMMUNITY GARDEN

Elected representatives attended a two session permaculture training in Chaseyama with the practical aspect carried out in Mabale. Focussed on water harvesting, crop diversity, land regeneration, pest control, etc. There is an increase in the number of wicking beds from 4 to 8; as a means of conserving water on a manageable space with maximum benefits.



MAMBANJE PRIMARY TREE ORCHARD

Collaborated with Friends of The Environment from Nyaradzo. Donation of fruit trees (Kroton trees & Juranta shrubs) to form an orchard with 63 fruit and other trees planted strategically around the school.



CATTLE BOMA & ANIMAL HEALTH INITIATIVE CONTINUED SUCCESSES

Investment in sheeting from guests & effective animal health initiative contributed to vaccination of all participating cattle. Since then, goats have also been incorporated into the programme.



FUNDING FOR COMMUNITY BOREHOLE AND GARDEN

Secured funding (Klein Family Foundation) borehole & garden in Mambanje.



CONSERVATION MUSIC PRODUCTION

Joined forces with the Conservation Music & Mambanje to produce trendy music video and audio file about the importance of conservation.



Hwange National Park, ZW COMMUNITY EMPOWERMENT



COMMUNITY EVENTS

Jane Bubear sponsored 10Km Fun Run & Heros Soccer Tournament continues to be major attraction and opportunity for relationship building. Painted Dog Conservation, Miombo Safari lodge, Conservation Wildlife Fund, Forestry, and Parks Offices. Imperative to continue for building traction with community.

WORKSHOPS, COMMUNITY MEETINGS AND EXCHANGES

30 young Mambanje girls trained on female sanitary wear (Chido Maria). Community exchange visits from Mola & Monde Communities. These community meetings are crucial opportunities for dialogue. Also had Bio-innovation workshops with Soft Foot Alliance

6 INCOME GENERATING PROJECTS IN THE DETE AREA

3 projects established (Thandanani, Vukani & Detema Sewing club). And 3 new projects include: Umtshibi Tuckshop, Main Camp Poultry & Mambanje Knitting. I.G.P. reps attended business management workshop facilitated by Ministry of Industry & Commerce and Department of Small to Medium Enterprises. Where they learnt record keeping, financial literacy, costing & pricing, marketing & branding, etc.

ABC served as primary market for Thandanani & Vukani. Elephants Eye also started purchasing products. Detema Sewing Club served local community & schools.



GUEST VISITS

17 ABC guest visits resulted in showcasing of projects & support (school fees, boma sheeting, goat gifts, etc)

Mola Community

ZIMBABWE

With the establishment of Bumi Hills Safari Lodge as part of the ABC portfolio in 2018, the Foundation's programmes in this area are only just beginning. After a crucial process of meeting with and understanding community leaders, various stakeholders in the area and the complex history the Tonga communities have experienced, our new Community Officer established that partnering with communities to focus on improving standards of educational environments at Mangwara Primary School and Mayovhe Secondary School was a priority. This, along with continued building of understanding for the significant human-wildlife conflict experiences in the area, we are looking into holistic ways of contributing to the local Mola communities.



Mola Community, ZW COMMUNITY EMPOWERMENT



COMMUNITY VISITS & MEETINGS:

Community visits, engagement & planning meetings with key stakeholders (Chiefs, Councillors, Village heads, etc.) to create awareness and implementation of ABCF activities in the area.

ABC GUEST VISITS

September to December saw high number of Bumi Hills guest visits (17 recorded). This resulted in raising awareness & support for mobilising resources. The most visited site was Mangwara Primary School.

EXCHANGE VISITS TO HWANGE PROJECTS

Projects Officer, Lawrence, afforded opportunity to visit Hwange projects where he learnt of successes and challenges there. He also attended a board meeting to present 5 year plan to communities.



MANGWARA PRIMARY SCHOOL CONSTRUCTION

ABCF added to shortfall of materials supplied by Ministry of Education in 2016 (including: \$5,000 worth of materials). Digging of the foundation took place on 25th of October 2018 by locally employed builders and community contributors.



STATIONARY, BAGS & SPORTS DONATIONS

Stationery donation to 572 pupils from Mangwara Primary & Mayovhe Secondary School (pens, pencils, crayons, painting brushes & art paper). The secondary school soccer & netball teams received uniforms and 45 children received bags through an ABC awareness raising campaign.



HUMAN WILDLIFE CONFLICT OPERATIONS (HWCO)

Training of HWCO set for October 2018, and facilitated by Hwange Lion Research. Unfortunately this was rejected by the Mola community and the leadership did not give reasons for denial of boma project & conservation program (1st Boma tests have subsequently been welcomed in February '19). Sources have availed fears of being denied rights to natural resources in the park.



SOLAR LIGHTING DONATIONS

16 teachers from Mayovhe & Mangwara & 16 students from Form 3 received solar lights in order to enable homework and study after nightfall.



MAYOVHE SECONDARY SCHOOL UPGRADES

30 bags of cement donated to construct flooring in all 4 classrooms. A builder was contracted by the school itself.



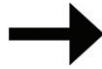
MOLA WILDLIFE COEXISTENCE PROGRAM

New funding proposal created in December 2018 to support a different approach. This involves protected transport, stray livestock management and high tech wildlife monitoring on community borders.

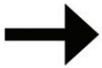
Marketing

NEW WEBSITE DEVELOPED TO BETTER COMMUNICATE ACTIVITIES

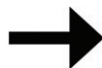
Design based on colourful, vibrant feel of project products with stronger links to ABC site and vice versa (with projects linking from each camp's page)



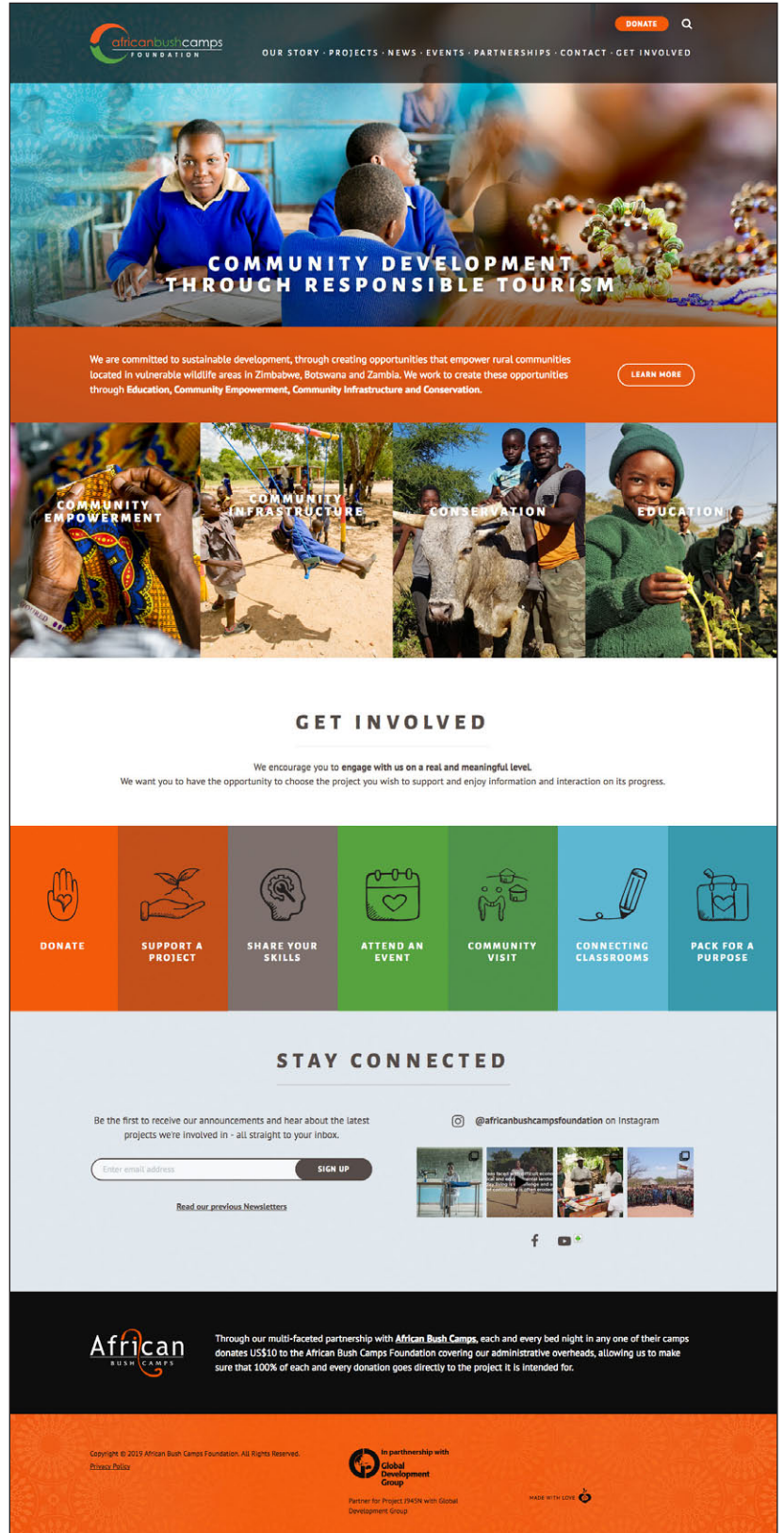
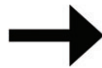
Project page filtering system view to easily see initiatives in different areas



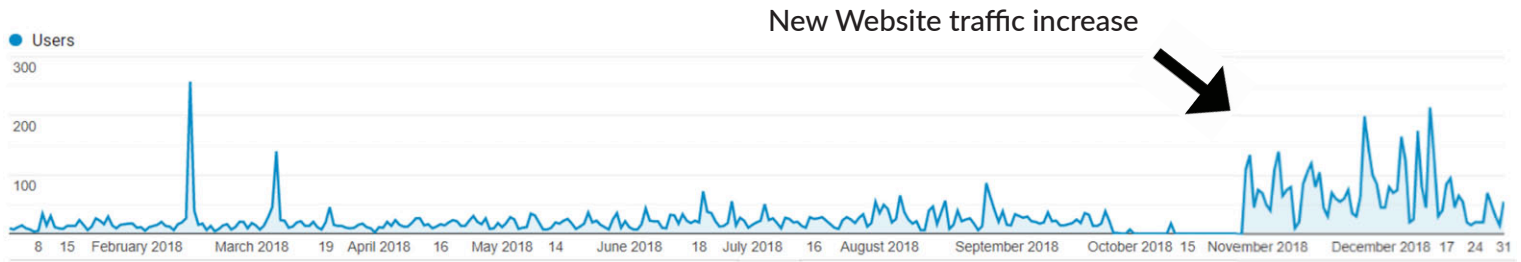
“Golden thread” elements aligned with new ABC website



Clear, informative ways for people to “Get Involved” in various ways



WEBSITE STATISTICS



5,649
Visitors to the website in 2018

+13.6%
from 2017



02.20
Average time on old website

NEW WEBSITE
03.50

(+62%)



67.8%
Bounce rate on old website

NEW WEBSITE
51.9%

(-15%)



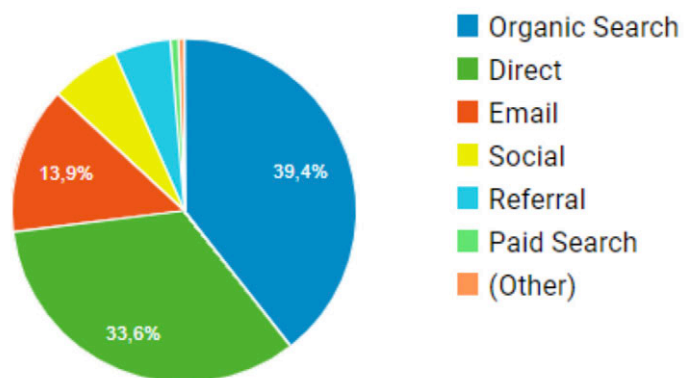
Conversions since launching new website in September:

Donation Clicks (Goal 8 Completions)
24

Ways to get Involved (Goal 15 Completions)
20

Country	% Users
1. United States	27,52%
2. Zimbabwe	16,91%
3. South Africa	14,77%
4. United Kingdom	8,86%
5. Australia	6,44%
6. Germany	4,16%
7. Botswana	2,82%
8. India	2,42%
9. Canada	1,61%
10. France	1,34%

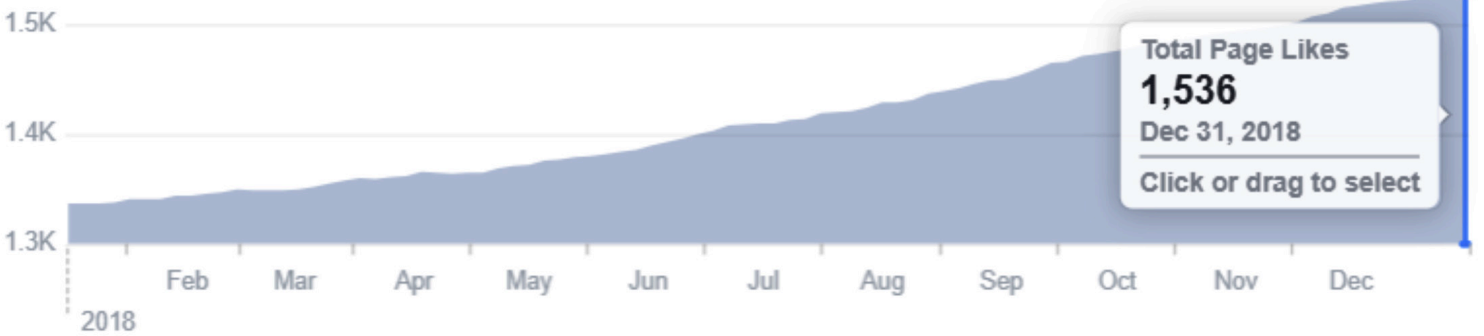
Top Channels through 2018



Digital Communications



Total Page Likes



Built ABCF playlist on ABC YouTube Channel to include 30 foundation video clips.

African Bush Camps Foundation - Responsible & African Bush Camps - 1 / 30

- Vukani Beading Group**
African Bush Camps
1:20
- Thandanani Sewing Project**
African Bush Camps
1:37
- Mambanje Teachers Cottage**
African Bush Camps
0:44
- Mambanje School Orchard**
African Bush Camps
0:28
- Mambanje School Community Garden**
African Bush Camps
1:01
- Mambanje Primary School Scholarships**
African Bush Camps
2:04



Launched & Maintained ABCF Instagram Account = 845 followers

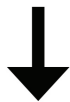
TOP 12 POSTS.
Number overlays represent engagement rates

62	59	59
55	53	51
51	49	48

Fundraising & Donations

paynow

secure online payments



Through our partner payment platforms we received over **US\$ 121,065** from at least **156 different donors**



A total of **US\$ 202,980** was raised through ABC bed night levy's in 2018



A total of **US\$ 16,943** was raised through voluntary ABC "Community Focus Project" initiative on invoices

GET INVOLVED

We encourage you to **engage with us on a real and meaningful level.**

We want you to have the opportunity to choose the project you wish to support and enjoy information and interaction on its progress.



DONATE



SUPPORT A PROJECT



SHARE YOUR SKILLS



ATTEND AN EVENT



COMMUNITY VISIT



CONNECTING CLASSROOMS



PACK FOR A PURPOSE

2019 Fundraising Goals

→ LIVINGSTONE, ZAMBIA

Thematic Area	Project	Brief Project Description	Fundraising Goal *
Community Empowerment	Maunga Health Centre - Equipment	The Health Centre requires functional medical equipment and clinic furnishings according to health standards to be licensed and function as a service for the community.	\$10,000.00
	Maunga Solar Borehole Project - conversion and installation	Access to running water for school and community members, replacing a laborious handpump currently in place. It will particularly benefit the Health Centre, providing plumbed in water and solar powered electricity through the project.	\$21,506.00
	Maunga Health Centre - Construction	The construction of the clinic was completed before the rains at the end of 2018, additional funding is required to pay for outstanding work so that the clinic can commence functioning.	\$27,834.43
Conservation	Schools Conservation Clubs	Partnering with stakeholders & local schools to support environmental education through practical permaculture and fun conservation experiences that children are able to translate into their communities.	\$1,100.00
	Maunga Tree Planting Day	The 1st Saturday of every December ABCF engages with schools in areas we work within in a day of celebratory and informative tree planting.	\$500.00
	World Environment Day Celebrations	An annual event aimed at being the biggest and most widely celebrated global day for positive environmental action. To commemorate the day, ABCF works together with schools in the areas we operate in Zimbabwe, Botswana & Zambia.	\$400.00
		ZAMBIA Total	\$61,340.43

**Some funds already raised towards these total project costs*

Thematic Area	Project	Brief Project Description	Fundraising Goal *
Education	Mambanje Primary Scholarships	Supporting families of orphaned and vulnerable students at Mambanje Primary School through covering school basic fees.	\$3,618.00
	Mambanje Teacher Support	Increasing teaching capacity at Mambanje Primary School by supplementing the salary of extra teaching staff, to lower the extremely high student/teacher ratio. Also sponsoring teaching books, material & tools.	\$7,200.00
	Mambanje Nutritional Supplement	Providing lunch through a feeding program at school dramatically increases attendance and improves concentration and performance at school. School gardens supplement the feed program with fresh produce, grown using permaculture methods.	\$2,760.00
	Mambanje Goats for Education Project	Providing opportunities for vulnerable children and their families who struggle to pay school fees to become financially self-sufficient. School children and their families receive an indigenous female goat to rear and care for. The sale of the offspring of which will, in turn, assist in covering school costs and can make them independent of scholarship funding within 2 years.	\$3,000.00
	Main Camp Pre-school Early Childhood Development (ECD) Ablution Block	Construction of ablution facilities for better hygiene and a greater level of dignity.	\$17,000.00
	Mambanje/Makwandara Low-cost Boarding Initiative Toilets, 2 dormitories furniture, electrifying	The nearest High School to Mambanje is a 7km and 2 hour walk through the bush, this initiative aims to provide better access to secondary school education and minimise dropout rate after primary school.	\$55,000.00
	High School and Tertiary Scholarships Program	Identifying particular children at high risk of dropping out of school, but with the will and ambition to continue. Sending them to the best boarding facility they can get into in Zimbabwe.	\$34,320.00
	Life Skills and Leadership Camp	Couples with the High School & Tertiary Scholarships Program. To equip students with life skills to empower them to thrive in the classroom and the world beyond.	\$10,000.00
	Hwange Skills Hub	A collaboration between 7 government agencies, 6 community organisations and 5 schools to develop a local skills development centre.	\$69,500.00

**Some funds already raised towards these total project costs*

Thematic Area	Project	Brief Project Description	Fundraising Goal *
Community Empowerment	Heroes Soccer Tournament	Sports is a highly valued pass time, this tournament gathers soccer teams from around the area to compete, celebrate and build a sense of community together.	\$6,000.00
	Dete Big Run	In remote rural areas, a sense of community is often been eroded through the constraints of poverty. We work with the communities vision of promoting collaborative fun in a challenging economic environment. The aim of our events is to provide a constructive, positive outlet for communities to come together and work together in celebrating their culture and talents.	\$9,000.00
Conservation	Schools Conservation Clubs	Partnering with stakeholders & local schools to support environmental education through practical permaculture and fun conservation experiences that children are able to translate into their communities.	\$1,500.00
	Zimbabwe National Tree Planting Day	The 1st Saturday of every December ABCF engages with schools in areas which we work for a day of celebratory and informative tree planting.	\$600.00
	World Environment Day Celebrations	An annual event aimed at being the biggest and most widely celebrated global day for positive environmental action. To commemorate the day, ABCF works together with schools in the areas we operate in Zimbabwe, Botswana & Zambia.	\$600.00
	Mambanje Community Garden	An income generating project aimed at empowering a dedicated group through financial & business training support, whilst providing much needed fresh produce within the community.	\$23,388.00
	Mambanje Boma & Cattle Health Program	Empowering the closest community to the border of Zimbabwe's largest National Park to be informed and live in harmony with wildlife in the area. Predation of cattle is mitigated through a mobile enclosure, with cattle owners being incentivised through a complimentary health program as well as residual soil fertility benefits from through communal herding.	\$6,000.00

**Some funds already raised towards these total project costs*

➔ BUMI, ZIMBABWE

Thematic Area	Project	Brief Project Description	Fundraising Goal *
Education	Mangwara Primary School Construction	Partnering with this historically disadvantaged Tonga village to improve learning environments for their children. Classes are currently held in thatch huts with no lighting facilities, classroom blocks being built by community members, builders and contracted skilled labourers.	\$28,000.00
	Mayovhe Secondary School - Ablution Block Construction	Partnering with this historically disadvantaged Tonga village to construct ablution facilities for better hygiene and a greater level of dignity for school children whilst at school.	\$9,000.00
	Mangwara Primary School - Furniture Purchase	Providing desks, chairs and classroom furnishings for a new school constructed in partnership with the Mangwara Community.	\$5,280.00
Community Empowerment	Mola Gill Net Provision	Procuring responsible gill nets for these traditional fishing communities, to allow for more sustainable fishing practices (with larger holes, so only adult fish are caught).	\$1,000.00
	Mola Fishermen Business Training	Working with local fishermen to develop business skills in allowing their trade to empower their lives as well as their families	\$1,000.00
Conservation	Mola Wildlife Coexistence Program	Limiting human-wildlife conflict in this high conflict area through working with livestock owners to implement measures to better monitor predators in the area whilst managing livestock and human movement better.	\$23,144.00
		ZIMBABWE Total	\$316,910.00

**Some funds already raised towards these total project costs*

→ KHWAI, BOTSWANA

Thematic Area	Project	Brief Project Description	Fundraising Goal *
Education	Khwai Pre-school Construction	Improving access to education and child care in Khwai village by building a Pre-School for children aged 1 – 5 years. This will prepare children for primary school, while ensuring they receive good care in the place of an absent parent.	\$25,000.00
	Khwai Pre-school Furniture	Furnishing of a new pre-school facility in the Khwai Community Area	\$5,250.00
Community Empowerment	Kavimba Bead Making Project	An income generating project, utilising bead making skills which is aimed at empowering a dedicated group through financial & business training support.	\$3,000.00
	Chobe Big Run	In remote rural areas, a sense of community has often been eroded through the constraints of poverty. We work with the communities vision of promoting collaborative fun in a challenging economic environment. The aim of our events is to provide a constructive, positive outlet for communities to come together and work together in celebrating their culture and talents.	\$5,000.00
	Chobe Independence Tournament	Sports is a highly valued pass time, this tournament gathers soccer and netball teams from around the area to compete, celebrate the anniversary of Botswana's independence and build a sense of community together. Local authorities, health initiatives and business participate in the day too.	\$5,000.00
Conservation	Chobe Environmental Education & Conservation Program	Partnering with stakeholders and local schools to support environmental education through practical permaculture and fun conservation experiences that children are able to translate into their communities.	\$3,000.00
		BOTSWANA Total	\$46,250.00

**Some funds already raised towards these total project costs*

Connect with Us



63, Heyman Rd, Bulawayo, Zimbabwe

Tel: +263-29-2234307

Email: foundation@africanbushcamps.com

www.africanbushcampsfoundation.org

