



Forever Wild

Our Societies | Our Earth | Our Future



YEARS 3&4
of 1000

A SHARED EARTH

Forever Wild Biennial Report 2020/2021

Forever Wild acknowledges and pays respect to the people and communities of the lands we work on.

Photo: Tobias Baumgaertner. A young girl assisting with fire management in a Forever Wild landscape

Contents

Our Goals	4	Creating Shared Earth Landscapes	12	Research and Surveys	27
Years 3&4 of 1000.... Reflections	5	The 3 Pillars	14	Thank you	28
CEO's Letter	6	The Western Deserts	16	Our Partners	30
A Circular Approach	8	Cape York	22	Governance	31
The Management Model	10	Wildlife and Evolution	26	Get Involved with Forever Wild	32



Our Goals

What we measure

1 Vibrant rural communities and broad societal engagement with our landscapes

- Social wellbeing
- Community engagement
- Community perceptions
- Political support

2 Biologically rich and ecologically stable wilderness ecosystems

- Species diversity
- Population dynamics
- Ecological function
- Habitat integrity

3 Sustainable and multi-generational economic activities within our landscapes

- Direct and indirect economic impact
- Economic investment metrics
- Economic partnership metrics



Photo: Tobias Baumgaertner
An island in a desert lake, Western Australia

Years 3&4 of 1000... Reflections

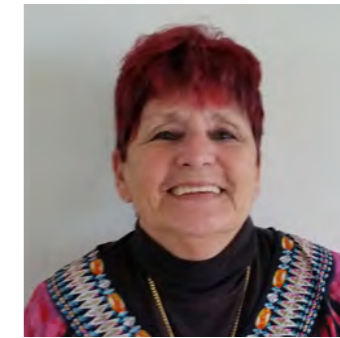


Rhonda Dooley

Community Wellbeing Working Group

I first got involved with Forever Wild in 2018 when they approached me as a Director on the Muluridji Corporation, to explain that they were now working on Muluridji lands, and they wanted to explore how we could work together.

I believe, and constantly say that we are all one mob. We are one people and are part of one natural world. What Forever Wild is trying to do is demonstrate that we can all live together with complete respect for each other and for our Mother Earth. That is what we must achieve.



Bev Vandine

FW Finance Manager

I am extremely proud to have been associated with Forever Wild since its inception and have been privileged to watch its growth into a highly respected force for the sustainability of the natural environment and the world we live in.

As a grandparent it gives me hope that, with the current plans being undertaken by Forever Wild in working towards obtaining stewardship and caring for wilderness areas, along with applying sustainable agricultural systems and working with Australia's First Peoples, my grandchildren and all future generations will have the opportunity to observe, enjoy and interact with the flora and fauna, and learn many new skills from those who took such good care of the land before we arrived.



John MacDonald

Board Member

I was invited to join the board of Forever Wild in early 2020 and was initially apprehensive about what I would be able to bring to the board with relatively little technical knowledge of global social and ecological issues nor the existing solutions. However, as part of a small team and partly due to fortuitous timing with people being available and perhaps open to new ideas and relationships during the pandemic, I was soon amongst a global network of respected and accomplished experts and think I learned a lot in a short space of time, able to grasp the matters at hand and I hope adding value to discussions about how Forever Wild's innovative approach can enable large-scale protection of culture, community, and environment in wilderness landscapes.

Most of us are quite aware that there is an alarming rate of irreversible damage and destruction in wilderness areas all around over the world and I think that it can be easy to be complacent, hoping or assuming that something or someone will make an intervention to help us avoid at best undesirable but most likely catastrophic consequences. However, I have learned that we can all contribute in some way whether participating in creating awareness, fund raising, or participation in action, and it is important and rewarding to do so.

The mission of Forever Wild is bold and ambitious in scale, but I think perhaps the biggest challenge is finding ways to successfully encourage people to think in new ways whether they be stakeholders in the landscapes or investors, and adopt change in how we choose to live.



Hans Krig

Investment Fund Manager

The risks facing the earth's last wildernesses and natural systems, as well as the people who depend on them, are greater today than ever. Climate change is a critical threat to biodiversity, as is habitat loss, following decades of intensive agriculture and industrialisation.

Forever Wild was early in recognising the potential for utilising environmental markets to finance conservation outcomes and the carbon price surge seen in 2021 gives credibility to the organisation's strategy. With two sizeable property investments close to being finalised within the Western Deserts program, Forever Wild has every opportunity to fully validate its business model and lay the foundation for its inspiring global ambitions. Against the backdrop of a nascent Australian impact investment market and the global ESG movement coming under increasing scrutiny, Forever Wild sets a great example as a high-integrity organisation that provides a true triple bottom line.

CEO's Letter

Fiachra Kearney

Our model, in practice, is the application of circular economics in wilderness landscapes.

Our model explicitly values biological diversity, cultural values, and human well-being.

These intrinsic and less tangible values form many of the metrics underpinned by the impact finance we raise, be it commercial or philanthropic.



These biennial reports are part of the record of Forever Wild, documenting the successes, challenges and ideas that develop as we begin our journey to protect the Earth's last wilderness landscapes. We are already a far cry from five years ago when many people scoffed at our ambition and model, to today when we have over 4 million dollars in impact investment commitments and are in the process of finalizing the acquisition of over half a million acres of wilderness. It still may not be much, but investors and foundations are taking interest in this new way of doing things.

It has not been easy of course, and there have been – and remain – times when I doubt our ability to pull this off. But then I realise there is no choice but to try, because if we don't try then we have already failed. The crux of the challenge is that we are essentially restructuring the relationship between society and nature in the landscape we work in.

There is no other organisation like us in Australia. That presents a marketing and awareness challenge, but we are up to the task and have already found companies and foundations willing to support this way of thinking.

On the ground in wilderness landscapes is where I really love to be. A highlight in 2021 was that we discovered a new species - I have always wanted to say that! It is a plant, in the genus *Eremophila*, and is in the Western Deserts landscape. I had my entire family with me as we worked under the direction of Dr. Peter Curry, our lead scientist in WA. We were following up on some incomplete records from the 1980's, and Peter had a good indication of what we should look out for. Towards the end of the three days, tired and dusty, we stumbled upon it. What a moment! Until it has been named and described by a taxonomic botanist, we unfortunately cannot release photos.

Our major landscape focus over the past two years has been the Western Deserts landscape of Western Australia. This extraordinary place is rich in ancient culture, biological diversity, and breathtaking landscapes. It can also support ultra-low impact agriculture to support private capital investment. It is a place we can demonstrate our model successfully, meeting our social, economic and conservation goals.

My most common refrain at the moment is that we do not have two planets. Yes, we need strictly protected areas for highly sensitive species. But in most parts of the world the creation of those areas, where people are largely excluded, is a luxury. Where population pressure is increasing, protected areas are being rolled back and swallowed by corporate agriculture or logging companies. There has never been a more important time to find a new way to protect our planet, to create large effectively managed landscapes that cater for all species. We must dovetail economics, including blended finance, and contemporary society with nature. To achieve the scale needed there is no other choice.

That is why Forever Wild exists, and that is why our model is of interest to partners who find limited options in more traditional conservation models.

I invite you to support us. Donate to us, partner with us or invest. Forever Wild is not one person, not even a small team. It is everyone who engages with us, who gives us support or walks away from our reserves with a powerful reason – whatever that may be – to protect wild landscapes. Forever Wild is a societal organisation. It is a legacy.

A Circular Approach

WHY?

We urgently need a robust, equitable economic approach to wilderness landscapes.

The effectiveness of conservation inside protected areas is heavily reliant upon the condition of the broader landscape. Therefore, we need a model that can drive effective ecological management of intact habitat at a much larger scale.

All people in these areas have the same rights to standards of living as everyone else. In many instances it is First Nations people in these wild landscapes – a more equitable circular economy can provide for this while not destroying the natural environment.

Philanthropy can only achieve so much. We need it, but what if we can blend philanthropy with the right sort of investment, where intact habitat, species and cultural heritage are actively valued? That's a game-changer.

We need big scale. We know that wilderness landscapes need to be at least 10,000km² in area, and ideally larger.

We need the right economic infrastructure to support this.

1. Investment

Impact investment and philanthropy for the Shared Earth concept blend together via Forever Wild

5. Revenue

Revenues from the sustainable enterprise are split 4 ways:

1. Back to the investor for their return on investment
2. To Forever Wild to keep us financially viable
3. Reinvested to expand the model
4. Financing critical programs under our Wildlife & Evolution and Human Sprit programs

2. Acquisition & Management

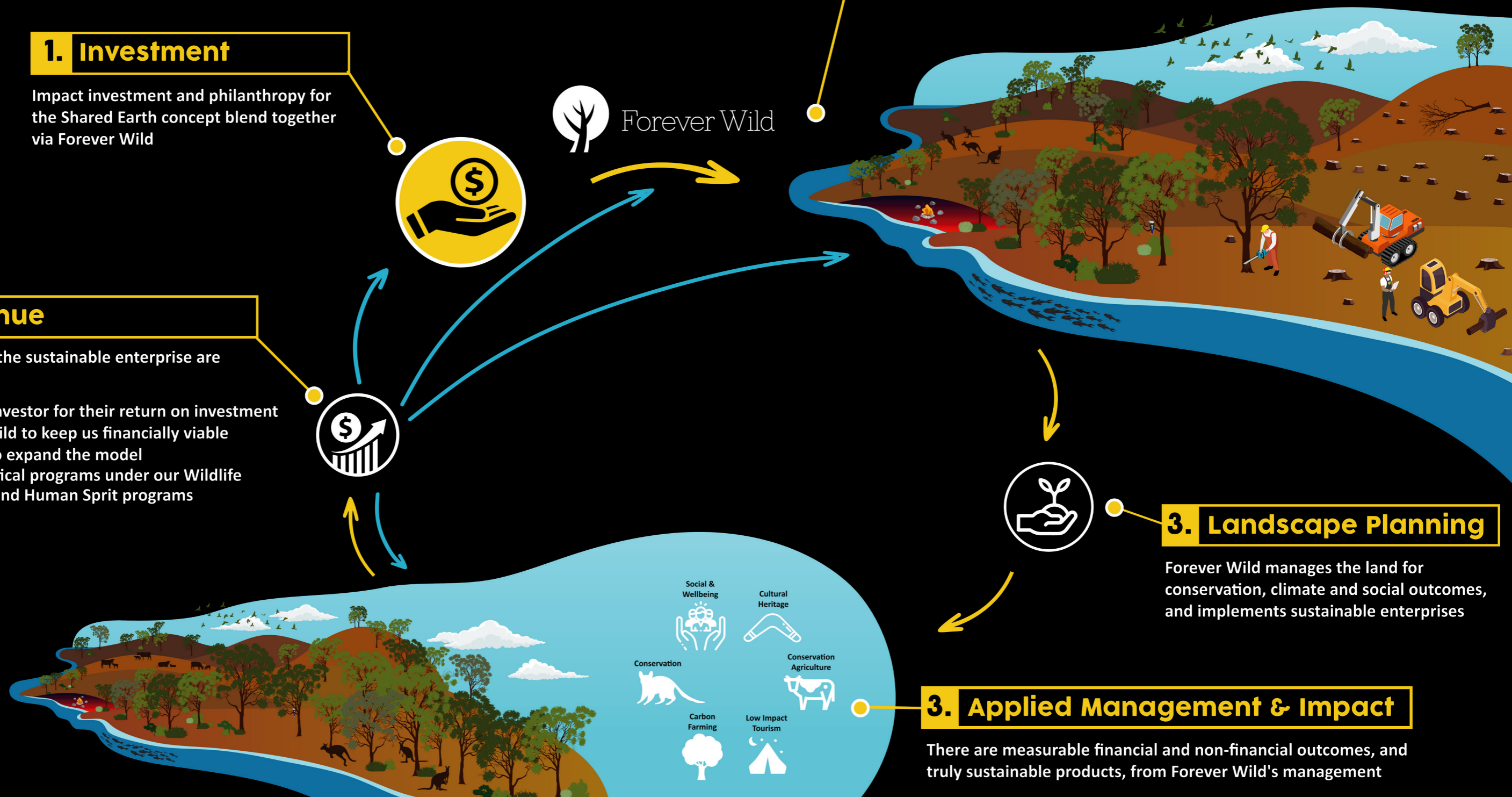
Finance supports acquisition and/or development of new land management models for natural and social capital

3. Landscape Planning

Forever Wild manages the land for conservation, climate and social outcomes, and implements sustainable enterprises

3. Applied Management & Impact

There are measurable financial and non-financial outcomes, and truly sustainable products, from Forever Wild's management



Social & Wellbeing
 Cultural Heritage
 Conservation
 Conservation Agriculture
 Carbon Farming
 Low Impact Tourism

1000 years

Forever Wild's Model For Wilderness Management

Protecting the Earth's last wilderness through purchase and co-management

Assess the natural, societal and economic assets of a landscape

Create vast Shared Earth Landscapes through purchase and co-management

Develop 3 concurrent operating programs in each landscape

Identify critically important wilderness landscapes.

Conduct a broad feasibility study on how a circular economic model could apply, and explore the landscape, community and ecological benefits of doing so.

Develop an in-depth understanding of community and regional societal needs and values.

Map these values against landscape assets and potential to support community and broader societal needs.

Co-design our Shared Earth Landscapes with the local communities and broader society, enabling people to identify with our reserves in multiple ways. Allow people to create memories and a positive feedback loop to our reserves.

Measure the change in attitude in social and political support for our landscape.

Apply wide-ranging, science-based conservation management.

Measure the stabilisation and long-term improvement of ecology and species.

Develop an understanding of the economic needs, key industries, and potential revenue streams in our landscape regions.

As a key landholder develop novel partnerships and work with the local and regional communities to develop ecologically non-detrimental activities that lead directly to jobs and revenue to the communities.

Measure the economic impact of our landscapes, and the attitude of industry, community, and government to Forever Wild.

Conserve, protect, listen, adapt.

Just as the circles suggest, the way we apply our thinking and the Forever Wild model, is circular. Investment and donations secure the land where required or is used to form co-designed agreements with local communities. Conservation and social values & needs are mapped spatially and conceptually against long-term, low-impact economic activity.

Underpinned by the investments, we work to reconfigure the relationship with nature, directly competing with industrial agriculture, logging, and destructive human activity. We aim big, looking at 10,000km² as a minimum target for a landscape. Depending on the context and complexity this can take a few years, but it might take far longer. That does not dissuade us.

A very brief preview of the Australia film being released in December 2020. The film will showcase the elements of our work in Australia, along with some of our local partners in these remarkable landscapes.

<https://vimeo.com/472463413>

CREATING SHARED EARTH WILDERNESS LANDSCAPES

Foundational Program

Objective: The creation of vast Shared Earth Landscapes

Our goal is the creation of large Shared Earth Landscapes (SEL) in the last remaining wilderness areas on Earth. These places are literally shared – between human beings and all that makes us, ecological processes, and biological diversity. The problem has been that humans are not great at sharing, and our economic model does not allow for it. So, our work is dedicated to changing that by restructuring the landscape scale economic cycle so that ALL values are equally considered. Our Shared Earth Landscapes will be large enough to realistically contribute to planetary scale systems and humanity across time. We envisage it may take between 30 to 100 years to build these landscapes with the smaller ones spanning at least 10,000km² and the larger ones upwards of 200,000km².



We don't seek to own all the land, but rather to acquire strategic areas upon which to build our model and influence the broader landscape. If we can demonstrate the economic benefits of protecting natural and social capital, we will succeed.

Within each landscape we run 3 spearhead programs: The Human Spirit, Wilderness Economies and Wildlife & Evolution. These programs frame how we share the natural capital and resources.

IMPACT: 3-4 YRS

Forever Wild **discovered a new species** of Eremophila in Western Australia. Likely to be classified as rare given its extremely small distribution. This species is currently being classified and we will reveal all once it is named, **which will enable it to be assessed for formal protection.**

Acquisition of additional 500 acres of land that expands the Tropical Wetlands reserve and habitat for the Northern Quoll. **This expands the area under formal protection for the species.**

Applied a comprehensive fire management plan over the Tropical Wetlands, and in doing so have restored the roosting habitat for brolgas and sarus cranes. **Numbers using the wetland have increased from 2 birds in 2018 to over 150 in 2021.**

Multiple activities and low-impact events have been conducted by the local First Nations people in our Cape York landscape, **a significant contributor to the well-being of the community.**

We have developed an ecologically balanced grazing regime for livestock in our Cape York SEL, **ensuring that critical wetlands are no longer impacted during the breeding season for birds that next on the shores.**

Progress against the 2019 / 2020 Objectives

We have completed the finance and operating framework. It took 4 years in total to complete this work, and we will continue to adapt. However, we have now successfully generated over \$4m in impact investment commitments.

We successfully engaged with all levels of government for the Western Deserts Shared Earth Landscape, our first major landscape.

2021 / 2022 Objectives

Acquire our initial properties in the Western Deserts, and construct the landscape management model using our co-design process.

Conduct biodiversity surveys in the Western Deserts landscape. We anticipate adding considerable data to the scientific knowledge in this area, given how little is recorded.

Continue to develop our circular economic framework to restructure how society interacts with the landscape, on FW properties and into the broader areas.

Develop our philanthropic, investment and government partnerships as we look to start increasing our scale.

Outcomes



557,000 acres of wilderness in the process of acquisition



Co-design process started for the Western Deserts SEL, specifically using the circular economics framework



An additional 500 acres added to the Tropical Wetlands, part of the Cape York SEL



Development of partnerships with several commercial entities who want to invest in our planet. Over \$4 million of impact investment capital committed to Forever Wild

Our 3 Operating Programs



A flower in the Western Deserts.



Within each Shared Earth Landscape we organise our work into 3 spearhead programs:

- The Human Spirit
- Wilderness Economies
- Wildlife & Evolution

Each of the 3 spearhead programs are co-designed with the community in the landscape, and generally includes a very wide range of activities such as biological conservation, low-impact restorative agriculture, First Nations tourism and wide-ranging well-being programs.

This forms the basis of our landscape-specific circular economy, bringing First Nations and other local communities directly into the decision-making process wherever we can. Or, if the land is owned by those communities, we dovetail our model into their land management processes to complement their knowledge and thousands of years of tradition.

Because we account for intrinsic ecological and human values, it is more powerful than a typical protected area. We aim for the landscape to be shared, and to have strong social and political buy-in. Without that, these places are much less likely to survive hundreds of years from now. We have one planet, and we must learn how to share it while acknowledging the economic realities that permeate, and the quality of life expectations that people living in these places rightly expect.

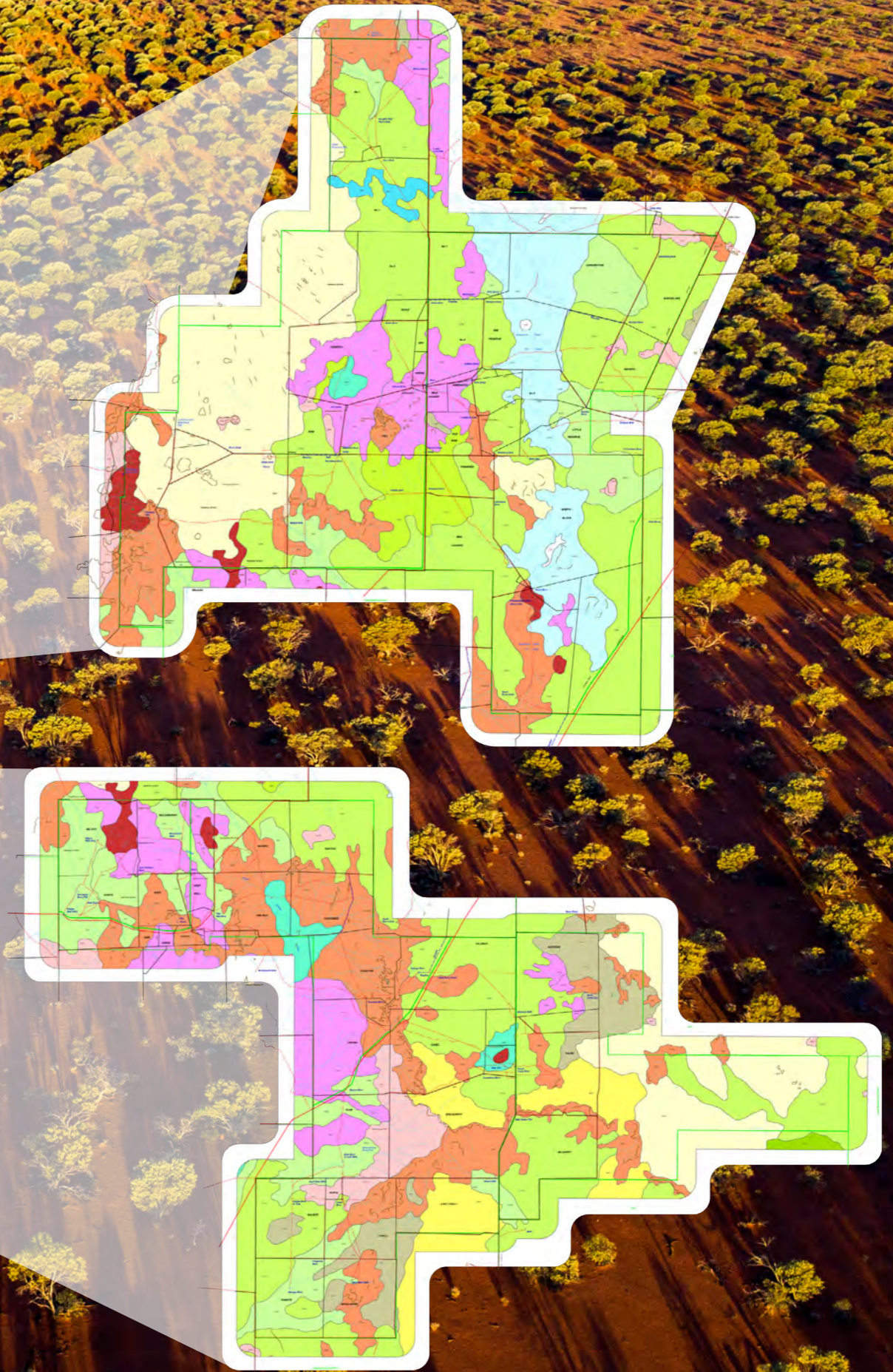
Locally
Nationally
Globally

|

RELEVANT



The Western Deserts
Shared Earth Landscape
Western Australia



Traditional Owners: Badimia

Western Deserts Shared Earth Landscape

Overview

The deserts of Western Australia are vast and beautiful landscapes that remain as some of the planet's most incredible wilderness. The mulga woodlands stretch from horizon to horizon, interspersed with enormous granite monoliths with hundreds of hidden rock art galleries dating back over 10,000 years. Spectacular salt lakes fill about once every 10 years, and ephemeral rivers snake through the red sands. Species yet undescribed scurry through the sparse undergrowth, and even live deep underground in ancient aquifers.

The Western Deserts maintain some of the most intact Aboriginal cultures and languages in Australia, harbour the secrets of European explorers and offer unique, non-destructive economic experiences for the people who visit them. Sadly, these wild landscapes and their communities are under significant threat from short-term exploitation, a lack of resources to protect them and severe social disadvantage.

In 2021 Forever Wild launched the Western Deserts Shared Earth Investment initiative, the vehicle to protect large areas of this magnificent place. Working closely with impact investors we blend philanthropic funds with private capital investment for large-scale protection of nature. This will enable us to act fast and create the solutions at scale that our planet urgently needs.

We are working closely with the communities of the Western Deserts to co-design a world-first in wilderness landscape management in a way that is ecologically and socially equitable, and economically viable.

It has taken nearly two years to design the finance mechanisms and to raise the initial funds. Concurrently we have been building relationships across the landscape and with all levels of government, to articulate a sound, circular economic model that suits the landscape and communities.

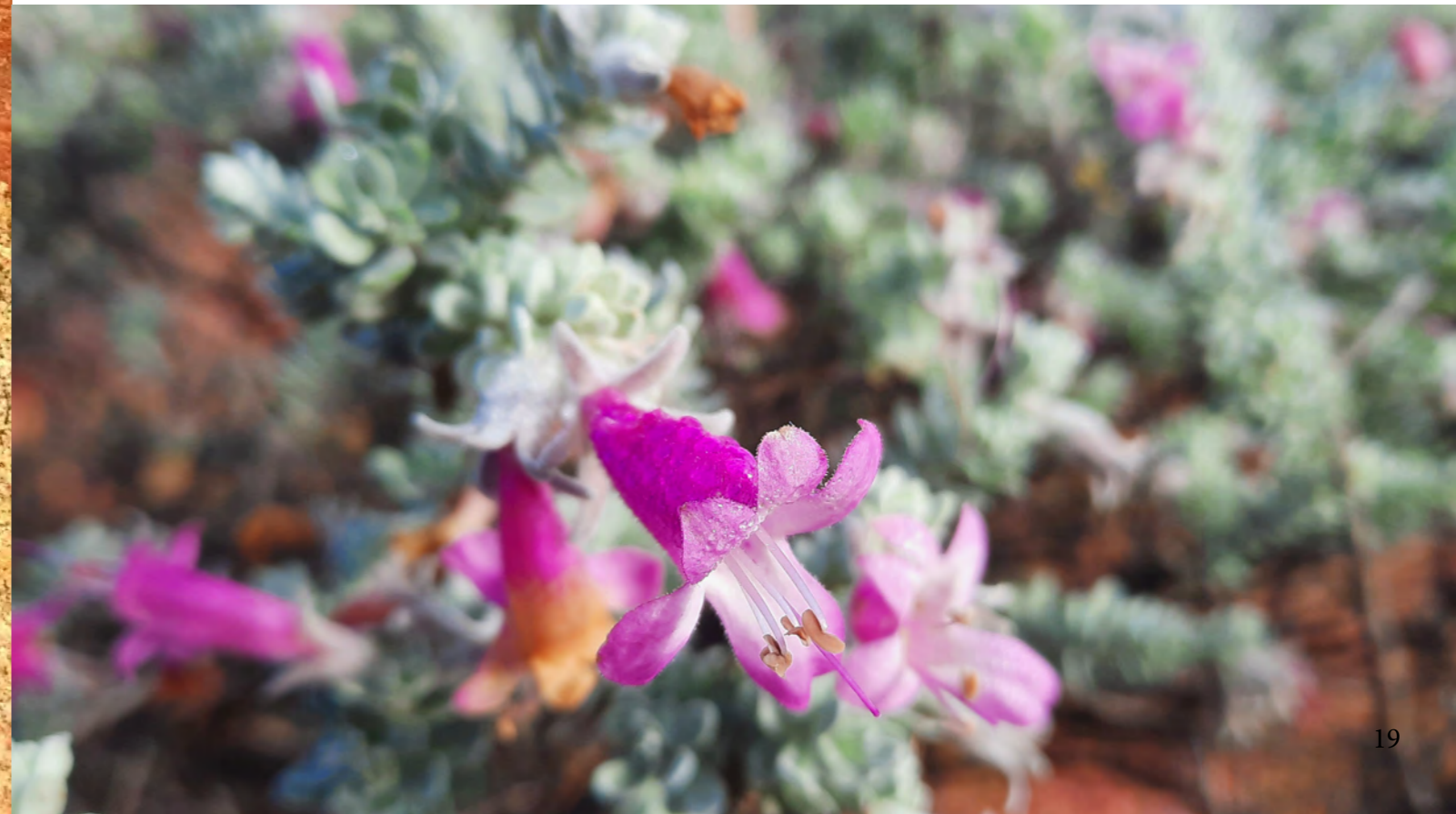
We anticipate our first large acquisition in 2022, so watch this space for exciting updates!

A MAJOR ACQUISITION

Over the course of 2020 and 2021 Forever Wild signed deals with investors who are willing to take a risk and back something new. This is underpinned by careful, detailed due diligence and sophisticated financial modelling with a tool that was created for us by Price Waterhouse Cooper. The financial model is unique in that it allows us to explore scenarios around natural capital, tourism and agriculture agriculture, and to create scenarios that cycle funds back into conservation and social programs. It also enables us to blend different forms of finance.

In late 2022 we anticipate completing our first major acquisition. It has been a very hard road to find investors who genuinely want to see change, but we have done it. The next goal is to convince philanthropic entities that new forms of finance and large-scale land management is viable and is something they should – **they must** – support.

We are now undertaking a co-design process with the wider community, including of course First Nations people, to explore different management scenarios over time and how this might develop.



WILDERNESS VALUES OF THE LANDSCAPE



Region & Landscape:

Murchison & Gascoyne, intact wilderness.



Climate Contribution:

Over 400,000 tonnes of carbon across 2,200km² will be permanently protected by 2022.



Habitats Protected:

Mulga Woodland, Desert rivers, Saltbush plains, Breakaways. Over 30 habitat types represented.



Human Spirit:

Multiple rock art sites and sacred areas. Multiple early European sites. Extensive shared history.



Wildlife:

Poorly surveyed, likely multiple undescribed species of fauna and flora. Remnants of small mammal populations in the Critical Weight Range.



Wilderness Economies:

Pastoralism, low density livestock; Development of Indigenous owned and led tourism; Wilderness tourism.

In 2013 it was estimated that 58.4% of the Earth's surface was highly modified.

We need to urgently apply and scale up bold, transformative initiatives to alter our trajectory.

Cape York
Shared Earth Landscape
North Queensland



Traditional Indigenous People: Muluridji
Languages: Muluridji, Kuku Yalanji
Government Partners: Queensland State Lands Department
Other sectors engaged: Conservation, tourism, pastoral

Overview

The global pandemic affected Forever Wild's ability to grow and operate, and the Cape York landscape was not spared. The intention in 2019 was to redesign the tourism operations on our Tropical Wetlands property, to create an extremely low-impact product with our partners. These activities are an important part of the circular economics, where the land supports non-detrimental economic activity that finances the conservation management, draws on First Nations knowledge and connection to Country, and brings revenue to the local community. However, the travel and other social restrictions that came about as a result of Covid19 meant that very little could be achieved on this front.



However, it did not prevent us from furthering the agricultural activity and developing ultra-low impact food production. Demonstrating that we can produce food and protect the full suite of species and ecological processes, alongside all the other values of wild places, is a long-term goal of FWL. It is not without contention of course, but so far conservation has not achieved anywhere near the level of success that is required. We must restructure our relationship with land and demonstrate that carefully design circular economies have a powerful role to play. We must offer an alternative to the increasing industrial livestock and cropping models that dominate our food systems, wiping out all other values and species in the quest for profit.

Our Tropical Wetlands property, the starting point for our Cape York Shared Earth Landscape, will be producing some of the world's most sustainable food – with measurable outcomes – by 2022. We aim to have it locally available as we trial this way of increasing consumer knowledge and of supporting people in remote area with an alternative model.

WILDERNESS VALUES OF THE LANDSCAPE



Region & Landscape:

Cape York, classified as intact wilderness



Habitats Protected:

Tropical wetlands and swamps; open and closed savanna woodlands



Climate Contribution:

Over 50,000 tonnes of carbon now permanently protected. Extremely low annual emissions from cool season burns and active prevention of wildfires



Wildlife:

>220 bird species, high mammal, amphibian, and reptile diversity. One of Australia's most important populations of Northern Quoll



Human Spirit:

Preservation of Aboriginal and European cultural heritage; Wilderness Arts; access for youth & mental health support; Community Connections; Visits by accredited wildlife groups



Wilderness Economies:

Low density livestock finances all conservation and land restoration efforts. Agreement in place with a local wilderness tour operator for ultra-low impact visitation. Forever Wild directly supports local First Nations artists

Wildlife & Evolution

The Tropical Wetlands continues to stun staff and guests alike with its outstanding natural beauty. The vivid emerald green and the animal activity brought on by the Wet Season to the multi-hued sunsets and golden-brown grasses of the Dry Season are a constant reminder of the cycle of life that has rolled past for millions of years.

A great deal of our focus over 2020 and 2021 has been to implement a fire regime, emulating the past burning practices of the area's first land managers and Traditional Owners, the Muluridji People. The early 'cool' fires clear out old vegetation and open up the savanna woodlands but do not kill mature trees or burn off all the fallen timber. The fallen timber is critical for the endangered Northern Quoll, a species that thrives on the Tropical Wetlands and the adjacent Hann Tableland National Park. Early fires also prevent highly destructive late-season fires, so getting this right is ecologically very important.



Research & Surveys

We were contacted by Patrick Webster a couple of years ago, for our Tropical Wetlands to be a field study site for his research. Patrick was studying button quail, a relatively poorly known group of birds, partly due to their cryptic habits in remote areas! We were more than happy to be field site, and Patrick's work has made a huge contribution to the scientific knowledge of these marvellous species.

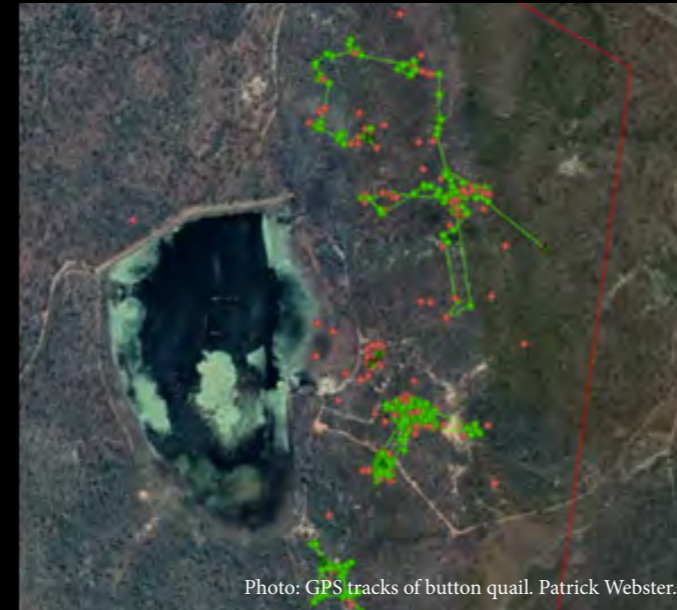


Photo: GPS tracks of button quail. Patrick Webster.



Photo: Painted button quail. Patrick Webster.

In other news, we have been setting up camera traps across the Tropical Wetlands property. One captivating animal regularly seen is the Northern Quoll, an endangered marsupial carnivore that is reliant on having good ground cover and plenty of fallen logs and hollows. While we have not yet conducted a robust abundance survey, we wanted to share a short, beautiful video.

An endangered Northern Quoll captured on a trail camera, on our Cape York Shared Earth landscape. August 2022.

<https://vimeo.com/741550428>

Thank you

Thank you to all those who have believed in us while we work to get this concept off the ground, and over the past two years in particular.

We extend a special thank you to the following people and organisations.

Cassinia Environmental

Cassinia took a risk and were the first to offer us investment. They stuck with us through Covid19 and through all the challenges of buying large tracts of wilderness.

Tobias Baumgaertner

Tobias is our incredibly talented and generous videographer. Without his enormous donation of time, equipment, and expertise we would not be able to tell our story.

Rhonda Dooley

Rhonda sits on our Community Advisory Committee in the Cape York Shared Earth Landscape. Rhonda is a tenacious, courageous and proud First Nations woman who has shared so much of her time and knowledge with Forever Wild to help us understand the needs of local First Nations people.

James Boettcher at FNQ Nature Tours.

James has been running wildlife-watching tours to our Tropical Wetlands every chance he gets, ensuring that FW is generating revenue for the management of the reserve. It has been deeply appreciated.

Mick Hinchliffe

Mick is the grazier on the Tropical Wetlands. Thank you for putting in so much time and effort into considering the conservation and overall property management.

Bev Vandine

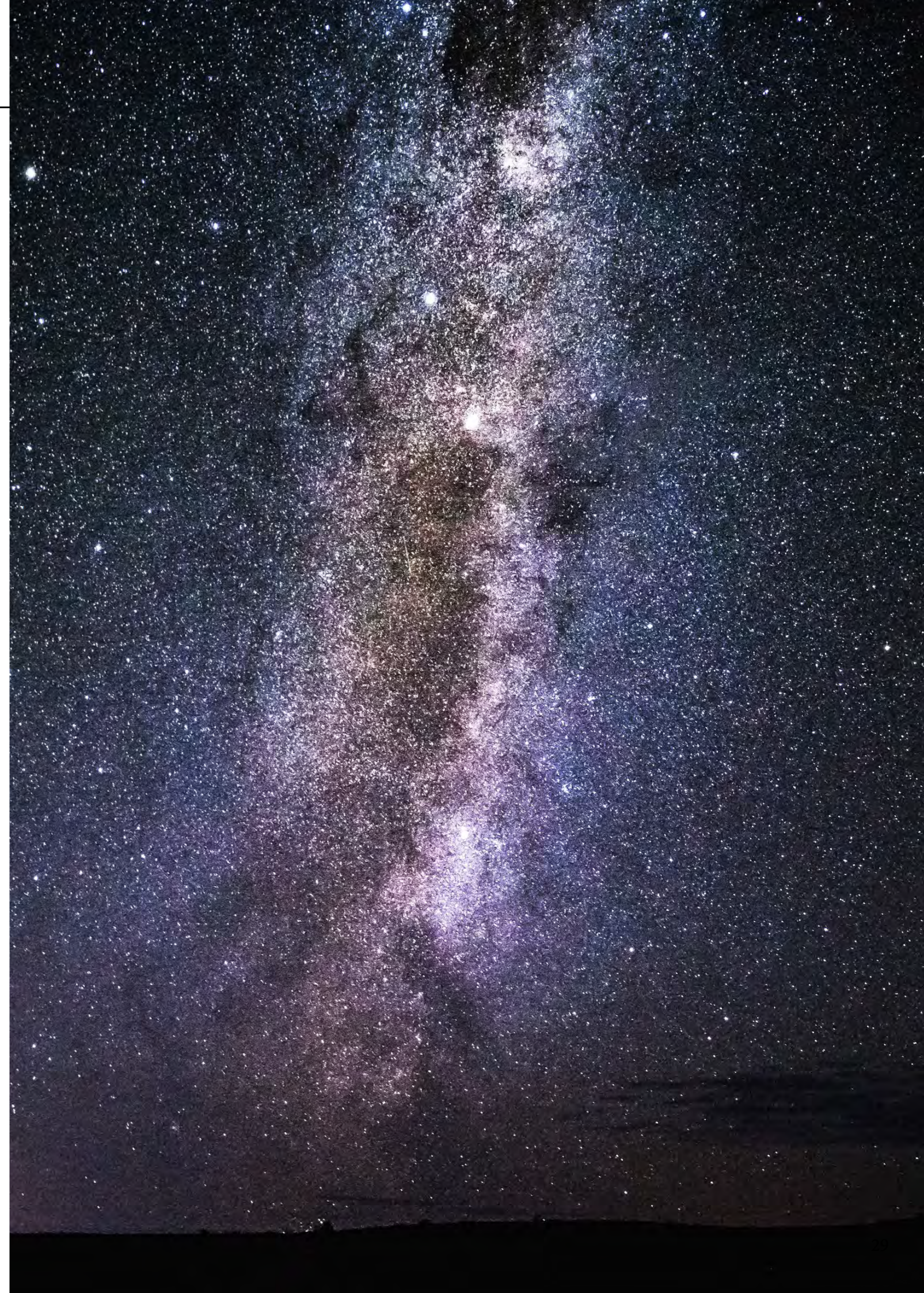
During the challenging time of Covid19 and the considerable financial challenges that brought to Forever Wild, Bev offered to work full time for half her salary over several months.

Oak Foundation

For believing in us and providing a large grant at just the right time!

John Burton

For his immense energy and passion for our model, great conversation and for sharing his networks.



OUR PARTNERS

STRATEGIC & GLOBAL



Forever Wild and the IUCN National Committee of The Netherlands will work together to build on the concepts and implementation of large-scale wilderness conservation and associated societal wellbeing.



Forever Wild opened a bequest account with the Australian Communities Foundation. By doing so it ensures that all bequests are managed by an independent trustee and used only for the purposes they are meant for.



Cassinia Environmental has joined Forever Wild as a commercial partner, supporting our innovative investment model for financing the long-term protection of wilderness landscapes.



The UK-based Oak Foundation has come on board to support Forever Wild's innovation in conservation finance and land acquisition.



Forever Wild was accepted to the GlobalGiving program in December 2020. This platform acts as a fiscal sponsor for donations in the USA, ensuring we are compliant with US legislation.

LOCAL



Forever Wild has partnered with the local Rotary District group to understand community needs, values, and networks around our Tropical Wetlands Shared Earth Reserve. Rotary have also been a local financial sponsor and we could not have run successful community support activities without them.

WILDERNESS ECONOMIES



The family run business is our agriculture partner for the Tropical Wetlands reserve. HNC is dedicated to producing high quality food in an intact wilderness landscape. We work together to implement practices that fully protect the ecology and demonstrate that food can be truly sustainable.



O2E have created a unique program with Forever Wild to enable people from around the world to experience life in wild places, and to connect with the culture and wildlife of these places.



Providing in-depth ecological tours, FNQ Nature Tours has joined with Forever Wild to create wildlife viewing products on our Tropical Wetlands reserve, Cape York.



Man & Dog Bush Adventures is a business focused on immersive experiences in wilderness. They have created an overnight product for our Tropical Wetlands reserve.

GOVERNANCE

Forever Wild is fortunate to have a diverse Board bringing strategic insights and real-world knowledge, combined with professional financial management. Over the course of the past two years we increased our skill set to include legal, accounting and investment.

Our Board of Directors lead the charge on organisational governance and broader societal engagement, actively supported with technical and networking input by the Global Council of Advisors. On the ground, Community Wellbeing Working Groups engage directly with the Board and Executive to keep our Shared Earth Landscapes as positive contributors to the local and regional communities.





GET CONNECTED WITH WILD PLACES
AND THE PEOPLE LIVING IN THEM.



www.instagram.com/foreverwild_earth



www.youtube.com/channel/UCoXVj0HsA93D-eeDThKCBIQ



www.vimeo.com/foreverwild



www.linktr.ee/foreverwildearth



www.foreverwild.earth

GET INVOLVED WITH FOREVER WILD

HELP US TO BUILD A LEGACY FOR OUR EARTH AND HUMAN SOCIETY

In ONE lifetime there could be NO true wilderness remaining.

Imagine a world in which not just plant and animal species are going extinct, but exploration and discovery as well. A world in which societal values have been irreversibly altered, and one where landscapes that once had the power to nourish, shelter and inspire humankind have vanished. A world where humanity's cultural and evolutionary origins have been **erased** before our very eyes.

Our vision is for vast Shared Earth Landscapes (SELs) that are biologically rich and truly meaningful to humanity, protected **now** and **1,000** years from now by the very communities and societies they nurture. These SELs will protect some of the last remaining wilderness on Earth.

This will be the legacy of all who join this mission - a legacy for humanity and for our Earth. We invite you to help build this.

Forever Wild accepts fully tax-deductible donations from Australia, the USA and UK. Forever Wild is registered under the Australian Charities and Not-for-profit Commission.

YOU CAN DONATE TO FOREVER WILD IN THE FOLLOWING WAYS:



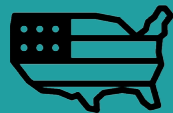
Make a major gift and join us in the Donor Insight Program



Become a Strategic Partner, including with impact investment



Support our Endowment & FW Societal Investment Fund for long-term SEL management



Donate in the USA to our Global Giving Account



Donate stocks and appreciated securities donations



Donations of property or other gifts



Leaving a bequest in your Will to our Futures Fund at ACF



Donate directly online via our website

INVESTING IN FOREVER WILD

Forever Wild is a leading innovator in programs funded through impact investment. Our investors and commercial partners finance us via a range of models.

Please contact us to learn how to support Forever Wild with impact investment for wildlife, our shared histories and cultures, and wilderness landscapes.

Return on investment is commercially viable, and will generate meaningful, measurable impact on the ground.

DONOR INSIGHT PROGRAM:

Our Donor Insight Program is a unique opportunity to gain deep insights into Forever Wild, our reserves and our work. Located on the Tropical Wetlands in Northern Australia donors are collected at the nearest international airport and transported to the Shared Wilderness Reserve for 2 nights.

Staying in elegant 'Walkabout' tents deep in the Australian bush on the shores of a spectacular wetlands, donors awaken to the magnificence of Northern Australia as few have seen it.

Accompanied by the Forever Wild CEO, the days are filled with activities across our spearhead programs, including Indigenous and Early Settler history & culture, experiencing sustainable pastoralism and of course unparalleled wildlife experiences.

Donors who meet the eligibility criteria will be emailed full details and various dates of when the Donor Insight Program is open.

YOU CAN SUPPORT US INDIRECTLY BY:



Experiencing our wilderness reserves with one of our licensed tour operators



Booking a wilderness event at the Tropical Wetlands SER



Attending our Wilderness Arts or Indigenous Australian's events

GET IN CONTACT

Australia: Contact Forever Wild at enquiries@foreverwild.com.au

UK: Contact us for details of our fiscal partner in the UK

USA: Donate directly to our IRS compliant and tax-deductible fund at Global Giving. The fund accepts monetary donations, real estate, and a wide range of other donations. <https://www.globalgiving.org/projects/protect-the-earths-last-wildernesses>



Photo: A painting of the Tropical Wetlands, showing the spiritual connection to the land. Commissioned by Forever Wild.



The artists Wayne Williams and Leroy Platt. Wayne also completed a work placement with Forever Wild, in conjunction with Mareeba Community Housing Company.



Forever Wild

Our Societies | Our Earth | Our Future