



Shining Star Organization





CATALOGUE



Organization
Introduction



Program
Introduction



01

Organization Introduction



ORGANIZATION INTRODUCTION



BEFORE

One recipient



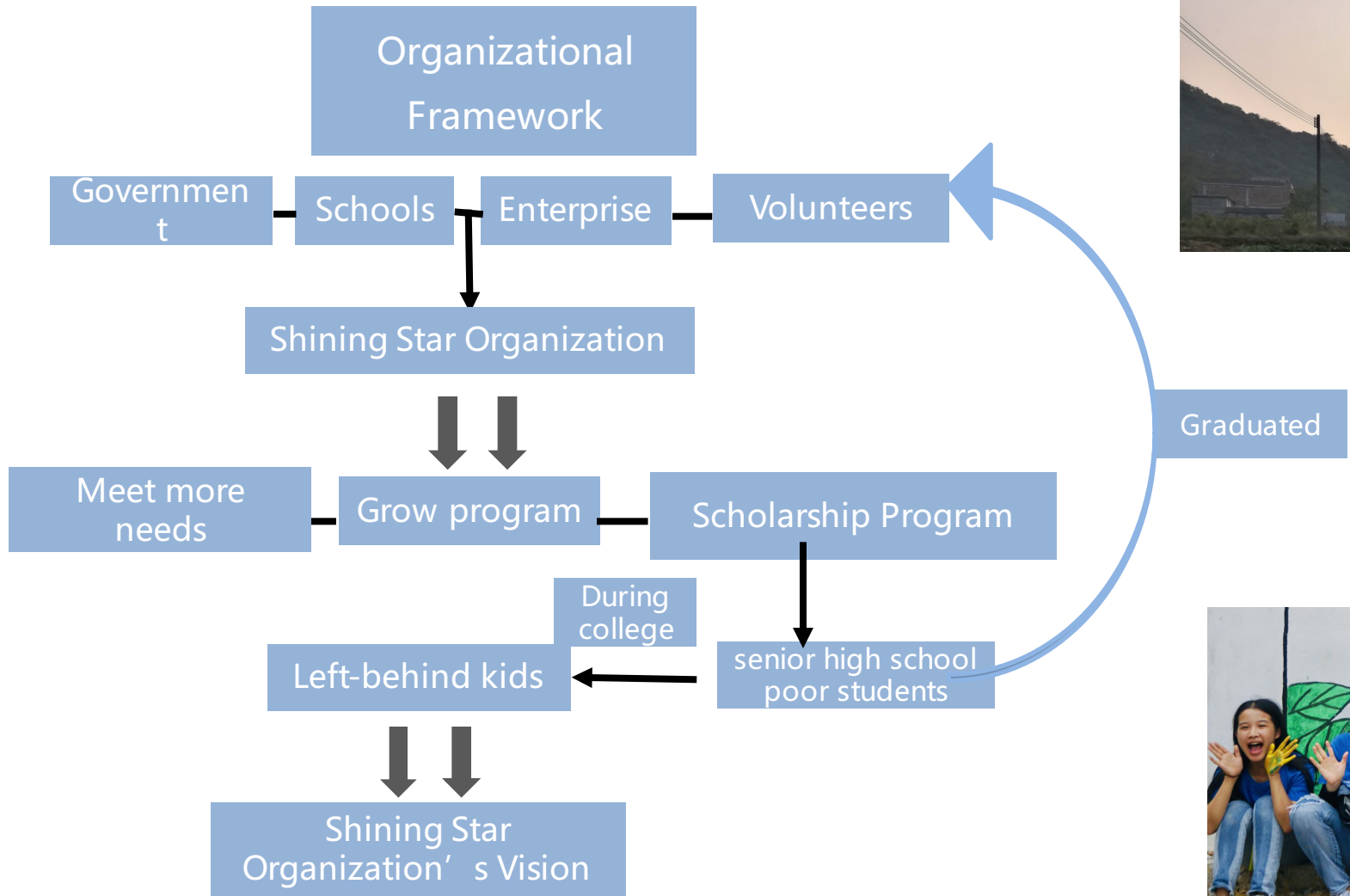
NOW

Become a group of givers

Vision

We help children and young people to feel loved, confident, positive, and develop into well balanced persons, and pass on the love and hope to others.

ORGANIZATION INTRODUCTION





02

PROGRAM INTRODUCTION



PROGRAM INTRODUCTION—GROW PROGRAM

The Needs of Left-behind Kids

In Guangdong Province, more than 2,500 girls have been sexually assaulted in the past three years, nearly half of them under the age of 14. The incidence of mental violence among children in the sample was 91.3%. Due to the lack of family education, some left-behind children do not develop good living habits and moral conduct, left-behind children have become a high-risk group of juvenile delinquency. According to a survey by Guangzhou University on crimes committed by the new generation of migrant workers in three prisons in Guangdong province, 80 percent of them used to be left-behind children.



The Needs of Village Schools

The proportion of left-behind children in rural primary schools is more than 70%. Rural schools — with their aging faculty, limited resources, and unformed mental health education — are not equipped to respond to this mental health epidemic.





PROGRAM INTRODUCTION—GROW PROGRAM

The development process of program

2014

The First Time Contact



The Sibao
Primary School

Volunteer.
Get to know left-behind kids
for the first time.

2016

First Pilot Project



The Sibao
Primary School

Chinese, Mathematics,
English, Arts
and Sports lessons.

2017

Second Pilot Project



The Yunan
Primary School

Six times a years
Resilience lessons and arts
and sports lessons.

2019

Third Pilot Project



The Tanbo Primary School
Xiushui Town Service Center

Program cycle - two years
Six times a year
Forming the final resilience
lessons.

2020

The Final Model

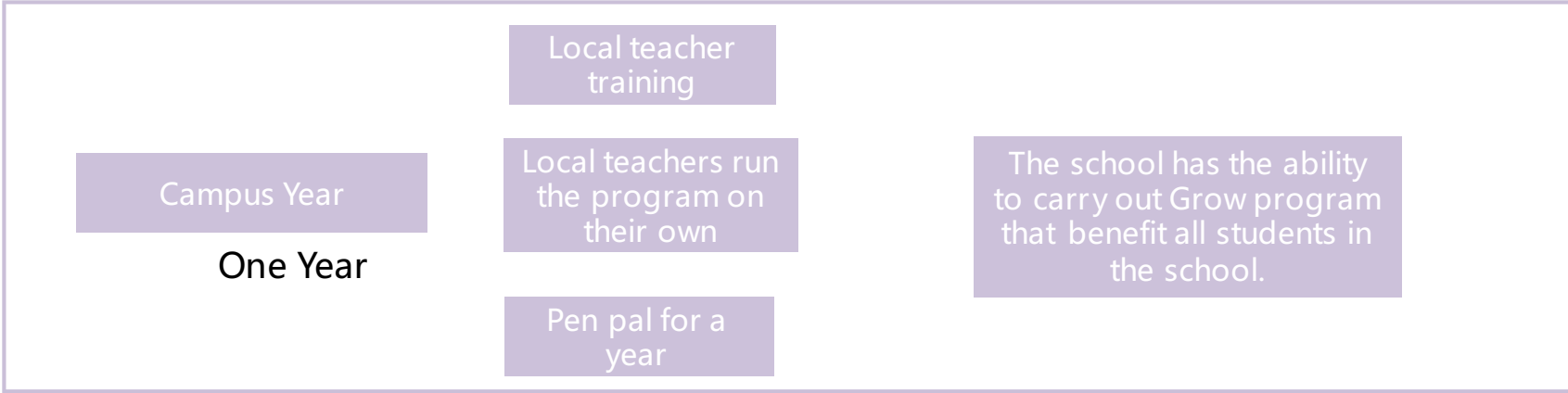


The Shiai Primary School
The Shuikou Hope Primary School

Summer Camp
and Campus Year.

PROGRAM INTRODUCTION—GROW PROGRAM

Program Content



Program Mode:
Plant seed in schools and make rural schools become a key force to protect the mental health of left-behind children.

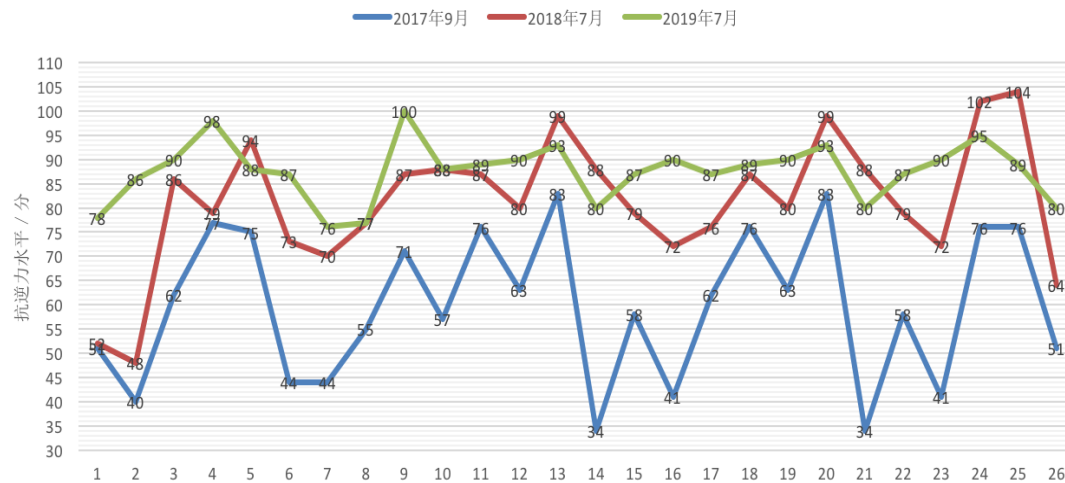
PROGRAM INTRODUCTION—GROW PROGRAM



Case Story – Help Yun to find smile

Always sitting in the back of the classroom, XiaoYun was a quiet kid. Since she barely responds to her classmates, the others stopped playing with her, with one classmate even saying that “XiaoYun is always going to be a loner” . After one year of a resilience program and another year of follow-up sessions, XiaoYun mustered both self-confidence and positive self-regard. Those two attributes then spurred her on to take the very first steps in rebuilding her interpersonal relations. Now, XiaoYun has her new group of friends, and she is an active participant in many extracurricular activities (ex. basketball). She has finally broken out of her shells and now greets the world with her newfound, lovely smile.

鱼南小学三四五年级抗逆力变化图



Program Achievements – The improvement of students' resilience

From 2017 to 2019, we carried out a two-year follow-up project site in Yunan Village. The figure on the left is the follow-up data for three times over two years. The data shows that the students' resilience has been greatly improved with the development of the project.

PROGRAM INTRODUCTION—GROW PROGRAM

Program Site Achievement



01



02

The Transformation of Art Education in Village School

From the beginning, there was no art celebration in the school.
Now, the school hosts activities and students rehearse programs on their own.
The artistic atmosphere on campus is totally changed.

PROGRAM INTRODUCTION—GROW PROGRAM

Future Plan The first copy of grow program

Through the introduction of the local government, we plan to launch the program in four schools in Huaiji County, Guangdong Province in the coming year. On average, more than 80 percent of the students in each school are left-behind children, and the schools lack lessons on artistic skills.



Shuikou Primary School



Shiai primary school



Taohua primary school



Wentang primary school

PROGRAM INTRODUCTION—GROW PROGRAM

Budget

BUDGET OF THE GROW PROGRAM				
Items	Secondary-level Items	Three-level Items	Details	Total cost RMB
			(Quantity* ¥ Unit Cost)	
Expenditure	Cost	Travelling/Meal/Boarding expense	(400+150+200) *18	¥13,500.00
		Subsidy for full-time teachers	300* 32	¥9,600.00
		Subsidy for teachers	100*16	¥1,600.00
		Training expense for teachers	2000*2	¥4,000.00
		Training expense for volunteers	3000*1	¥3,000.00
	Expenses	Facility for Interest Group	4000*1	¥4,000.00
		Cost of teaching supplies and teaching plan	(2000+1000)*1	¥3,000.00
		Cost of basketball clothes and costume	1000*2	¥2,000.00
		Achievement exhibition	2000/+800/+3200	¥6,000.00
		Ceremony expenses	1000*1	¥1,000.00
		Cost of Home-visit gifts for children	50*60	¥3,000.00
		Insurance premium	10*76	¥760.00
	Operating costs	Operations personnel costs	Salaries and wages	6000*5*1
Operating expenses		Project evaluation fees	1000*4	¥4,000.00
Administrative expenses	Agency day-to-day administrative costs	Administrative costs	Around 10%	¥10,000.00
The expenses for one project				¥95,460.00
The expenses for two projects				¥190,920.00