

PCI

Program Update 2021

Bringing
positive
change to
our people



PCI is a non-profit & charity organization (501c3) born out of a passion for making the world a better place. We build a community that is more inclusive, and equitable around the globe through advancing social change & racial equity

OUR PROGRAMS

BASED ON OUR 6 MAJOR PILLARS, PCI IS DEDICATED TO MAKING THE WORLD A BETTER PLACE:

- **DRIVE CHANGE**
- **MAKE IMPACT**
- **VALUE LIVES**

- **SHOW EMPATHY**
- **LIVE A LIFE OF RESULTS**
- **SOLVE PROBLEMS**



WE ARE ONE

LIST OF OUR PROGRAMS

01 RACIAL EQUITY

Drive policy reforms for racial equality in the workplace for all minorities. Work with employers to remove bias and ineffective policies.

02 WOMEN & CHILDREN PROGRAM

We support our women with food, healthcare products, and children with uniforms, books, and other provisions that will enhance academic growth.

04 FOOD & HEALTH

Support infrastructure development like healthcare - create access to good healthcare and clean water. Pay for child healthcare insurance.

05 EDUCATION

OUR GOAL IS TO HAVE EVERY CHILD IN THE SCHOOL

06 ENTREPRENEURSHIP PROGRAM

Support young people to become change-makers in their respective communities. Train innovative thinkers in a variety of skills and lead them into the realm of social entrepreneurship.

07 LEADERSHIP DEVELOPMENT

Provide academic training and mentorship to students and graduates



4216 N Terraview Dr.
Appleton Wisconsin 54913
920.509.2270- info@pointtters.org



www.pointtters.org



FIND

SOLUTIONS



CEO's Note

2020 was a difficult year for every one of us. COVID tested our existence but we fought the good fight and we won the battle. I believe this year 2021 is a turning point to a better future.

Nevertheless, challenges facing us and our communities are real. The poor educational system for minorities, racial inequality in the workplace, and poor access to the standard healthcare system. Every child deserves a good education and healthy meals daily. Every family deserves to have opportunities to take care of their children and their future.

We have got to stand together to find solutions to all these problems. One thing that I know for sure is that we are so endowed with technical capabilities and options to address these obstacles. There is no amount of obstacle that can stop us if we work together and lean on each other for support.

Let's start by **finding solutions** to these challenges. PCI is ready to work and utilize every resource available to tackle every tough issue we face every day.



DIMEJI TOMORI
CEO & FOUNDER

UNITED STATES

Contact : Dimeji Tomori
Phone No: 920.509.2270

GHANA

Contact : Sandra Aidoo
Phone No: +233545366377

NIGERIA

Contact : Richard OB
Phone No: +2349038265962

KENYA

Contact : Caroline Ndanu
Phone No: +254706554523

LIBERIA

Contact: Melvin Toulee
Phone No: +231880393460

SOUTH AFRICA

Contact: Siphenth Sakele
Phone No: +27813222385



Currently, PCI has 6 locations supported by over 100 Volunteers. Each location has a Country Coordinator. United States is the PCI HQ based in Appleton WI

WE ARE LEADING THE WAY



PCI launched Operation PHP program across the 6 locations in 2021. PCI is currently committed to pay for health insurance coverage this year (2021) for 200 kids in Ghana.

PHP

PCI HEALTH PROGRAM,

PCI provided school materials to over 100 students in Liberia and Ghana this year 2021



Children Education Program

Africa has the highest rates of educational exclusion in the world. Over one-fifth of children between the ages of 6 and 11 and one-third between the ages of 12 and 14 are out of school.

Education & Infrastructure Development



EDUCATION INITIATIVE PROGRAM

PCI is committed to education infrastructure development - We are collaborating with local institutions to support our programs

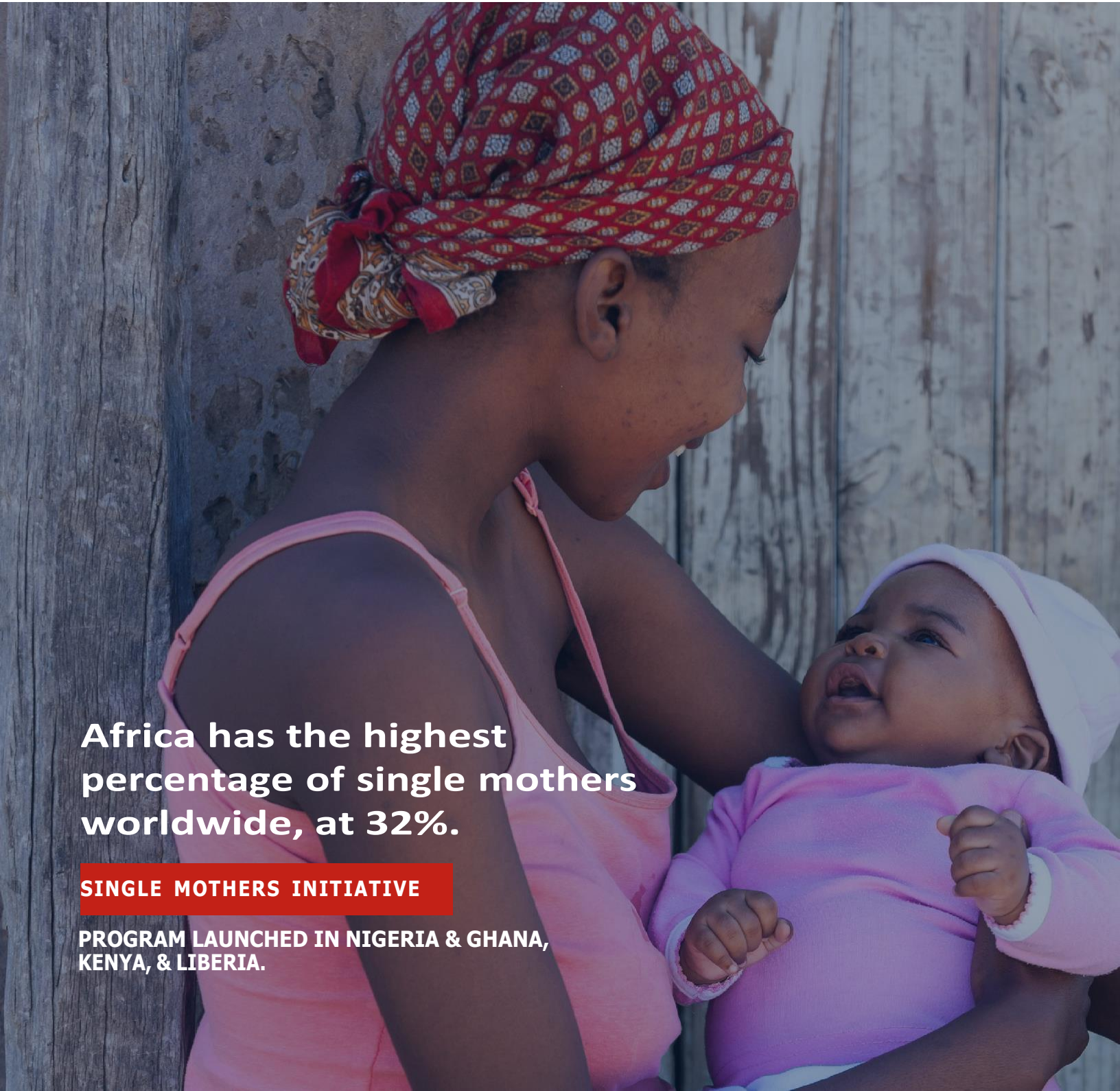
SMI

Single Mothers Initiative

Africa has the highest percentage of single mothers worldwide, at 32%.

SINGLE MOTHERS INITIATIVE

PROGRAM LAUNCHED IN NIGERIA & GHANA, KENYA, & LIBERIA.





Single Mothers Initiatives in the US

PCI donated 100 dollars each to 20 single women in April- May 2021 with a 50 dollars worth of goods

There were around 14.84 million families with a female householder and no spouse present in the United States.



DRIVING THE CHANGE

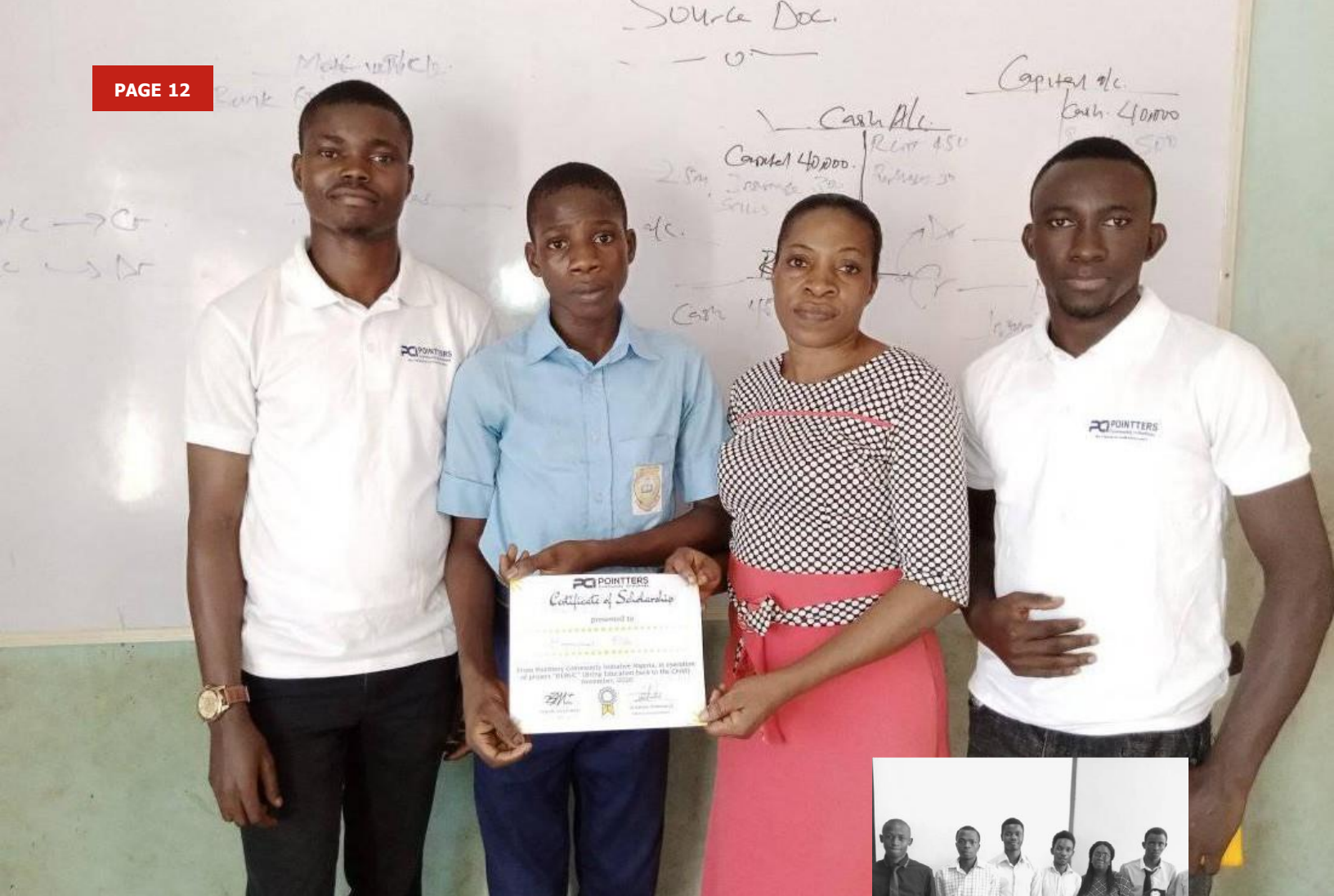
**PCI is currently supporting
over 10 families with
household items and other
materials**



healthier options for kids

OPERATION FEED THE HUNGRY

**PCI has donated foods to students in Ghana and Liberia.
We are curretnly working with the local leaders on food
support and water treatment**



SCHLARSHIPS FOR STUDENTS

PCI is currently supporting students with scholarships. PCI sponsored 5 college students in 2020 with a 1-year scholarship in Nigeria. The organization is planning for the 2021 Scholarship coming up in August 2021

REW

Racial Equity in the Workplace

According to last year's statistics: 'About three-quarters of blacks and Asians (76% of each) – and 58% of Hispanics – say they have experienced discrimination or have been treated unfairly because of their race or ethnicity at least from time to time.



PROGRAM LAUNCHED IN THE UNITED STATES

Multiple Organizations pledged to support PCI - We had a zoom meeting with the employers in April 2021 @ Fox Valley and other non-profit organizations





Youth Empowerment & Leadership Program



YELP supports young people to become change-makers in their respective communities.

YELP PROGRAM

PROGRAM LAUNCHED IN NIGERIA & GHANA

P
A
D

U
P



YOUNG GIRLS PROGRAM IN KENYA

PCI provided sanitary pads to over 50 girls -Dec 2020



Kids Education Program in Ghana

Women Program in Kenya



Single Mothers Program in Liberia



Liberia Volunteers



Financial Report

Two-Year Financial Statement				
	Current Year (2021)		Previous Year (2020)	
Income	USD	Local Currency	USD	Local Currency
Individual Donations	4100	4100		3000
Corporate Donations				200
Community Foundation Fox Valley	2500	2500		
Amazon(goods)	2000	2000		
Grants				
<i>List each grant</i>				
Events and Fundraising				
Membership Fees				
Interest Earned				
Other (<i>specify</i>)				
Total Income	8600	8600	0	3200

Expenses	USD	Local Currency	USD	Local Currency
Programmatic Activities				
Family Support	1500	1500	300	300
Student Scholarship	100	100	400	400
Single Women Program	2000	2000	100	100
Overhead				
Operational Expenses	1000	1000	1000	1000
Website Development	1000	1000	500	500
Lobbying activities				
<i>List other expenses</i>				
Total Expenses	5600	5600	2300	2300