

Red Cross Response to COVID 19 Outbreak in Asia and the Pacific



15th July 2021

New Waves of COVID-19

- Countries in the Asia Pacific region continue to experience new waves of COVID-19 infections, which are threatening to overwhelm hospitals and already fragile healthcare systems.
- Daily new cases are still on an increasing trend in Indonesia, Malaysia, Myanmar, Fiji and Bangladesh.
- Overall, the Asia Pacific region has recorded over 41.3 million COVID-19 cases, and more than 605,000 deaths. Real-time data is available at the [IFRC Asia Pacific COVID-19 Epidemic Dashboard](#).



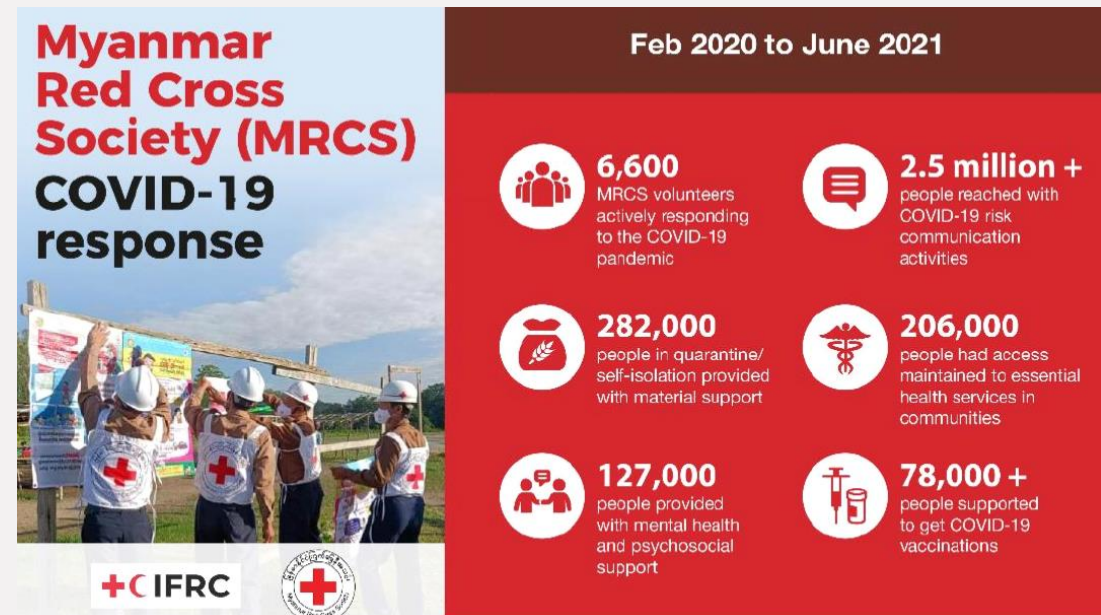
Red Cross in Indonesia

- Indonesia's COVID-19 crisis is worsening as the highly transmissible Delta variant spreads across many cities and districts. There are harrowing accounts of patients dying before reaching hospital and an independent data group, Lapor COVID-19, reports 453 people have died from COVID-19 in self-isolation between June and July 2021.
- Red Cross in partnership with District Health Office in Jakarta has set up a vaccination centre where than **4,000 people have been vaccinated**.
- Over **900 COVID-19 patients** have been treated at Red Cross Hospital Bogor.
- Red Cross ambulances have transported **1,946 people** suspected or confirmed to have COVID-19.
- Red Cross has provided dead body management services for **477 deceased patients**.
- Our Health services have reached **1,800,335 people**, while home-based care and mental health and psychosocial support services have reached **37,996 people**.
- Health and hygiene promotion activities have reached **7,275,945 people**.
- Around **982,420 health and cleaning kits** have been provided in communities along with health and hygiene promotion.
- **50,564 COVID-19 patients** have received convalescent plasma therapy treatments



Red Cross in Myanmar

- Red Cross activities aim to influence community risk perceptions and disseminate key messages about COVID-19 transmission and safe behaviours in communities in Bago (East and West), Kachin, Kayin, Magway, Rakhine, Thanintharyi and Yangon. (**56,397 people** to be reached)
- In cooperation with healthcare personnel, **58,314 people** were reached by temperature screening at checkpoints and public places (school and monasteries) in June.
- Red Cross support people staying in community-based quarantine centres and distribution of food and drinks, temperature screening, providing transport to/from quarantine facilities, disinfected items, and hygiene/dignity kits.
- Red Cross continues to assist with COVID-19 vaccination activities organised by local authorities and reached 3,321 people in Shan (East), Bago (East), Shan (South), Magway and Tanintharyi regions in the last few weeks.
- Red Cross also provides transport facilities to people suspected to have COVID-19 to quarantine centres/medical centres by ambulance.
- To reduce the emotional, social, physical, and psychological effects of COVID-19, psycho-social services are being provided in communities as well as to those in quarantine facilities and IDP camps



Red Cross in Fiji

- Widespread community transmission continues in the Suva-Nausori-Lami corridor and smaller clusters have been reported in the western division and interior of Viti Levu.
- COVID-19 patients dying outside health facilities is still a major concern
- 232 volunteers from 15 branches across Viti Levu and Vanua Levu have been trained to support vaccine registration.
- Red Cross is currently **deploying between 60-100 volunteers from 8 branches** to support the Ministry of Health and Medical Services.
- Ongoing social media awareness including COVID-19 preventative measures and the COVID-19 vaccine.
- **PPE have been prepositioned** at branch level.
- Red Cross is currently finalizing a training resources on 'home-based care' for community volunteers



Request for Support

In the wake of current surge COVID-19 cases in Asia and the Pacific, your support will enable Red Cross across the region to continue their activities with the objectives to reduce the COVID-19 transmission and support vulnerable people cope with the impact of the pandemic. Your support will help people in the region to:

- Sustain their health, build community trust access to and acceptance of vaccines, have access to the knowledge they need to protect each other from transmission, support and deliver vital therapeutic treatments to people suffering from COVID-19.
- Ease the socio-economic impacts of COVID-19 through the provision of food and other essential assistance including cash grants
- Support Red Cross to keep their staff and volunteers safe, by providing PPE and training and access to COVID-19 testing, as they work with and support people and communities vulnerable to Covid-19

