

THE MARTIN J. WALDBAUM REHABILITATIVE DAYCARE CENTER IN ASHKELON



The Martin J. Waldbaum
Rehabilitative Daycare Center

**A CAPITAL PROJECT TO GIVE PRESCHOOL CHILDREN
WITH DISABILITIES A BETTER START IN LIFE**



HELP US ENSURE A BETTER FUTURE FOR ASHKELON'S CHILDREN WITH DISABILITIES

The Demand for Early Childhood Care in Ashkelon

Despite being a major target of Gaza rocket fire, Ashkelon is one of the fastest growing cities in Israel. Because of this, Chimes Israel has been hastily expanding its daycare and rehabilitative programs for children ages six months to three years to meet Ashkelon's ever-increasing demand to care for children with autism, developmental delays, genetic syndromes, and other disabilities.

Chimes Israel Facilities in Ashkelon

Chimes Israel's four overcrowded, inadequately repurposed residential homes that serve as daycares are full of small rooms and many stairs, which are extremely difficult to navigate for these special children and their cumbersome equipment. This is especially true in times of conflict, when the children must be transported to shelter within 15 seconds of a siren alert.

Solution: A State-of-the-Art Facility

With the understanding that early diagnosis and proper intervention is critical for achieving the most favorable outcomes in young children with disabilities, the Ashkelon municipality has granted Chimes Israel land to build and operate a new early childhood center, and plans have been drawn for a building that can accommodate 80 children.

A portion of the design, construction, and equipment will be paid by the National Insurance Institute, the Municipality, Shalem Fund, and private donations. The rest must be raised privately.

A Better Future for these Children

The new Martin J. Waldbaum Rehabilitative Daycare Center, named after our major donor, is primarily relying on private support from committed donors to become a reality.



The new center will enable Chimes Israel to provide high quality, professional services, treatment, education and support for hundreds of children in Ashkelon for years to come. The building will be fortified as a protective area, so the children will be safe and do not have to flee to shelter in times of emergency.

It will give young children with disabilities the start in life that they deserve to reach their potential. In turn, by using their own abilities and skills to lead lives of dignity, independence and community participation, they will have the potential to make the world a better place.

HOW TO HELP

You can help these children by donating to the building of the center and purchasing of the center's playground and therapeutic equipment.

Our appreciation of your support will be displayed on the wall plaques of this state-of-the-art, fortified daycare and rehabilitative center that will provide these children with the best possible start in life to master their disabilities.

PANIC & FEAR UNDER ROCKET FIRE IN ASHKELON

Located just 9.7 km (6 miles) north of Gaza, Ashkelon was one of the hardest hit Israeli cities in the recent outbreak of violence in the ongoing Israeli–Palestinian conflict. From May 9 until May 21, Ashkelon endured 960 of the 3,400 rockets that reached Israel, with seventy-five of them falling directly inside the city.

Due to its proximity to Gaza, the people of Ashkelon had only 15 seconds to get to a shelter after hearing a siren to protect against an incoming rocket. Despite the Iron Dome's success with 885 interceptions, two people in Ashkelon were killed and hundreds were injured.

Chimes Israel's two early childhood centers in Ashkelon, Shulamit and Shaked, are located in four residential homes that have been repurposed to serve as daycares. After the ceasefire, the Ashkelon municipal inspectorate went to the centers to assess damage. They discovered and cleared several rocket and Iron Dome fragments.



Iron dome casing and rocket fragments found on Chimes Israel early childhood center playgrounds and walkways in Ashkelon



CHIMES ISRAEL'S EARLY CHILDHOOD FAMILIES DURING THE ROCKET FIRE

Coping with the rocket fire and sheltering is traumatic for everyone, however, the Chimes families with young children dealt with increased emotional and physical hardships due to their children's disabilities. "The challenges of being closed-in for a long time in a protected space are intensified for toddlers with disabilities whose routines have been disrupted, said Vered Carsenti, a social worker and Chimes Israel's Vice President and Program Director. "Children are dependent on their parents for emotional assurance. When they see their parents' anxiety as they hustle everyone into the shelter, all confidence is undermined."

With no safe room in their apartment, the family of the Shaked center's three-year-old Roy, who has autism, was forced to shelter in his building's basement bomb shelter during the rocket fire. For this young child with autism, the overwhelming sensory stimulation of the booming rocket noise along with the neighbors' hysteria, triggered nonstop meltdowns with screaming, crying, and lashing out.

Another little Shaked center girl, Emily, lost the freedom to move around a room during the entire 11 days of Gazan hostility. Unable to walk without a standing walker, the family could not risk using it during the entire conflict. This is because it took more time to get in and out of the walker than the 15 seconds allotted to make it down to the shelter. Because the walker is also training her to walk independently, her progress at the center also suffered a setback.



Chimes Israel parent, Chen Shai (sitting with three of his children), speaks to Channel 12 news about life under rocket fire in Ashkelon

Chen Shai, father of four, including two children with disabilities, told *Channel 12* TV news in May 2021, "coping with this conflict [*Operation Guardian of the Walls* May 10-21, 2021] has not been easy. It is about coming in and not panicking, because it's the first thing you want to do, but you can't do it." Regarding two-year-old Itamar with cerebral palsy who attends Shaked, Shai explained, "Itamar's therapy thing has been compromised as well. We're a few days into the operation and his progress is deteriorating."

MESSAGE FROM THE CEO OF CHIMES ISRAEL



The Martin J. Waldbaum Rehabilitative Daycare Center Will Serve As A Model For The Future

Since 1991, Chimes Israel, an Israeli not-for-profit, has become a leader in developing and providing innovative, evidence-based habilitation services and support for children, adults and seniors with disabilities and other barriers to independent living.

In partnership with the government of Israel, other entities and local municipalities, Chimes Israel has grown to serve over 1,400 individuals of all ages.

We provide early childhood, education, habilitation, employment and leisure services in 14 regions throughout Israel.

A fundamental tenet of our services is the belief that people with disabilities can thrive with necessary support.

Chimes Israel's role is to help people with disabilities achieve their greatest level of independence as members of their communities.

Chimes Israel is recognized nationally and internationally for its network of high quality, human-centric services. One of its hallmarks is the Chimes Rehabilitative Daycare Centers operated in cooperation with four different municipalities.

The six existing locations currently serve over 180 children from ages six months to three years. Each of these centers combines a full range of professional resources under one roof to maximize the potential of children with developmental challenges. This model has demonstrated the success of comprehensive early intervention.

For over a decade, Chimes Israel has partnered with the Municipality of Ashkelon to provide disability developmental services for 60 toddlers in rented residential homes that have been modified for the purpose.

Despite the less-than-ideal physical facilities, these two programs have been hugely successful.

Based on anticipated population growth in Ashkelon and the expanded need for early intervention services, Chimes Israel has been asked to step up to fill the void by constructing a center to serve as a model for future services in the region and beyond.

The land for the building has been provided by the Municipality in a newly developed area.

It is anticipated that a portion of the cost of design and construction will be paid by the National Insurance Institute (Bituach Leumi), the Municipality, Shalem Fund, Martin J. Waldbaum and other foundations.

The remaining funds to support this important initiative must be raised from committed supporters in Israel and abroad.

The material included as a part of this document provides a more detailed analysis of the need and the specifics of the project.



Jorge Zimmermann
Executive Director

MESSAGE FROM THE ASHKELON SOCIAL SERVICES DEPUTY DIRECTOR

Ashkelon is a large coastal city in southern Israel. It is situated some 50 miles south of Tel Aviv and 60 miles west of Jerusalem. It is well known for its long sprawling coastline. Today, there are some 153,000 people living in the city. The population is primarily composed of Israelis whose families came from North and South Africa and Arab speaking countries with a smattering of immigrations from North America and Britain. Following that, there has been immigration from the former Soviet Union and Ethiopia. Most recently, immigrants have arrived from The Ukraine and France.

Over the past 12 years, Ashkelon has suffered numerous rocket attacks from Gaza. Despite this, it is a thriving and developing city. The government allotted land in the northern part of the city for major housing development, with work already underway on new roads and infrastructure. During the next ten years, the city's population will rise to more than 280,000 people.

Ashkelon Social Services Department

The Ashkelon Social Services department provides a continuity of personal and community services for over 11,000 households from serving all ages. The social services department has a long and successful record working with NGOs in the joint operation of community services for people with a wide variety of physical and developmental challenges. The department is already preparing for the requirements of the projected population increase.

The Municipality of Ashkelon and Chimes Israel

In 2006, Chimes Israel won a Ministry of Social Services tender to establish and operate a regional day care center in Ashkelon for developmentally challenged children from ages six months to three years.

The centers are overseen by the Ministry of Social Services and supervised on a day-to-day basis by the Ashkelon social services department. The social services department provides transport for the children, and Chimes Israel provide professional travel escorts to and from the centers.

As there was no existing municipal building to house this program, Chimes Israel rented three houses on the private market. The houses were not designed for infants with developmental challenges. Chimes Israel renovated the buildings to make them more "accessible" for the needs of the children, but they are still inadequate for their needs.

The Project to Build a New Day Care Center

Naturally the dispersion of three buildings increases the operating costs substantially. In 2017, Chimes Israel and the social services department proposed the establishment of a new building for up to 50 children. The Municipality granted Chimes Israel land to build and operate this new nursery in the new "Agamim" neighborhood in the southern part of the city. A contract has been signed between Chimes Israel and the municipality that Chimes Israel will operate the program for 25 years after the completion of the building.

In addition to the support of the municipality of Ashkelon the project has the support of two government backed organizations: the national social security organization (The fund for the development of services for people with disabilities) and the "Shalem" foundation. The Ashkelon municipality and social services department views this project as an essential link in the chain of community social services for people with disabilities.

David Wolfson, Deputy Director
Ashkelon Social Services Department



ABOUT CHIMES ISRAEL

A Tireless Champion for the Rights of People with Disabilities

Goal	Mission	Fundamental Tenet	Vision
To help people with disabilities realize their full potential by learning skills to lead a life of dignity and independence with their community.	To improve the quality of life of people with disabilities from every sector of society, every day, through specialized professional services delivered by a well-trained and supervised, caring staff.	To provide services for all sectors of the population, irrespective of ethnicity, religion, politics, nationality, age or gender.	<p>To be an acknowledged force in supporting the challenges and integration of people with disabilities.</p> <p>To be leader in developing innovative and effective programs for people with disabilities.</p>



ABOUT CHIMES ISRAEL

VIDEO

Please visit this link to see the video:



Executive Offices: Chimes Israel, Rubanenko Center 13 Ha'Arad Street, Tel Aviv, 6971065 Israel
Tel +972-36442427 E-mail: contact@chimesisrael.org.il www.chimesisrael.org.il

CHIMES ISRAEL REHABILITATIVE DAYCARE CENTERS

The continuous success of Chimes Israel daycare centers has improved the quality of life for hundreds of toddlers and family members over the years.



About Disabilities in Israel

- Israeli Ministry of Health: 10 percent of children are diagnosed with significant developmental delays
- Over 200,000 children with disabilities in Israel
- In low socio-economic municipalities, the proportion of children with disabilities is 11% versus 7.7% of the total population of children
- The proportion of children with disabilities is higher in Arab municipalities vs. Jewish ones: 8.3% vs. 7.6%
- This is an underestimate due to the lack of an appropriate system for ID and diagnosis of certain disabilities in the Arab sector
- The number of children who need services is two to three times greater than those who receive services

Chimes Daycare Centers

- Operates seven rehabilitative daycare centers containing 3-4 classrooms
- Centers located in Modi'in, Ramat Hasharon, Hod Hasharon, Ashkelon, Tel Aviv-Jaffa and Holon
- For babies and preschool children with developmental delays, physical disabilities and complex medical issues
- Serve over 200 infants and toddlers ages six months to three years
- Playgrounds are adapted to the children's developmental, gross motor, fine motor, social, communication, sensory and cognition needs
- The daily routine includes playtime, outdoor activities, birthday and holiday celebrations, music classes, and more

Daycare Center Services

- Developmental rehabilitation, paramedical and educational services
- Guidance, emotional support and training from paramedical staff to allow continuity of treatment at home
- Individualized habilitation plans determined in collaboration with parents, professional, medical and paramedical staff
- Assistance for the move to either mainstream or special education kindergarten
- Host support groups and workshops for children's parents, siblings and grandparents

THE MARTIN J. WALDBAUM REHABILITATIVE DAYCARE CENTER VIDEO

Please visit this link to see the video: <https://youtu.be/0hh9BuRFySQ>



 CHIMES ISRAEL DONATIONS
<https://www.chimesisrael.org.il/en/waldbaum-project/>

THE MARTIN J. WALDBAUM REHABILITATIVE DAYCARE CENTER IN ASHKELON

Delivering rehabilitation, paramedical and educational services for children ages six months to three years

For 80 children with disabilities

- Developmental delays
- Autism
- Complex medical issues and physical conditions

Safe, accessible playground

- For developing dexterity, and physical, cognitive, and emotional strength



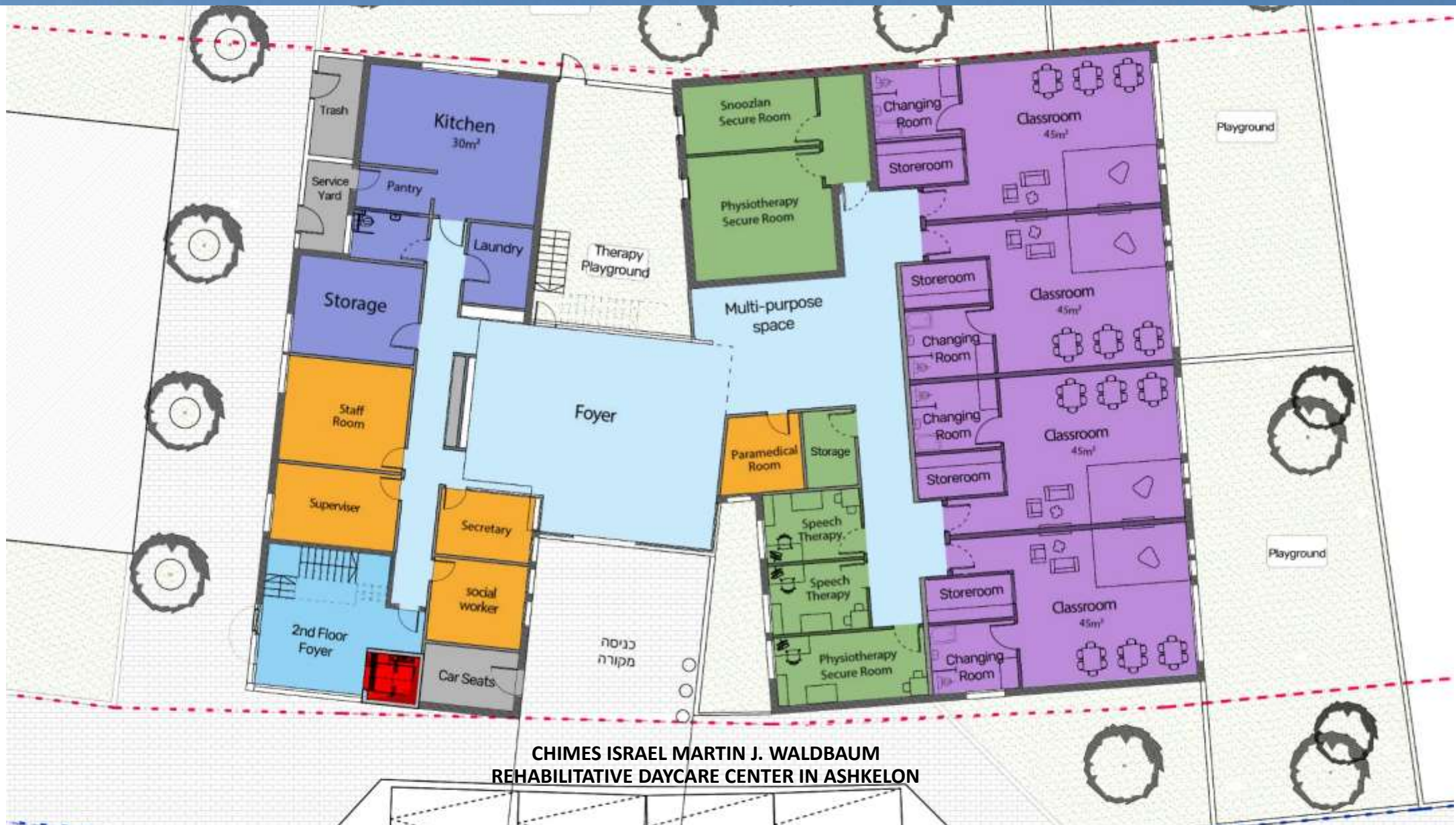
Therapy rooms

- Individualized developmental rehabilitation, paramedical and educational services
- Guidance and emotional support for all family members

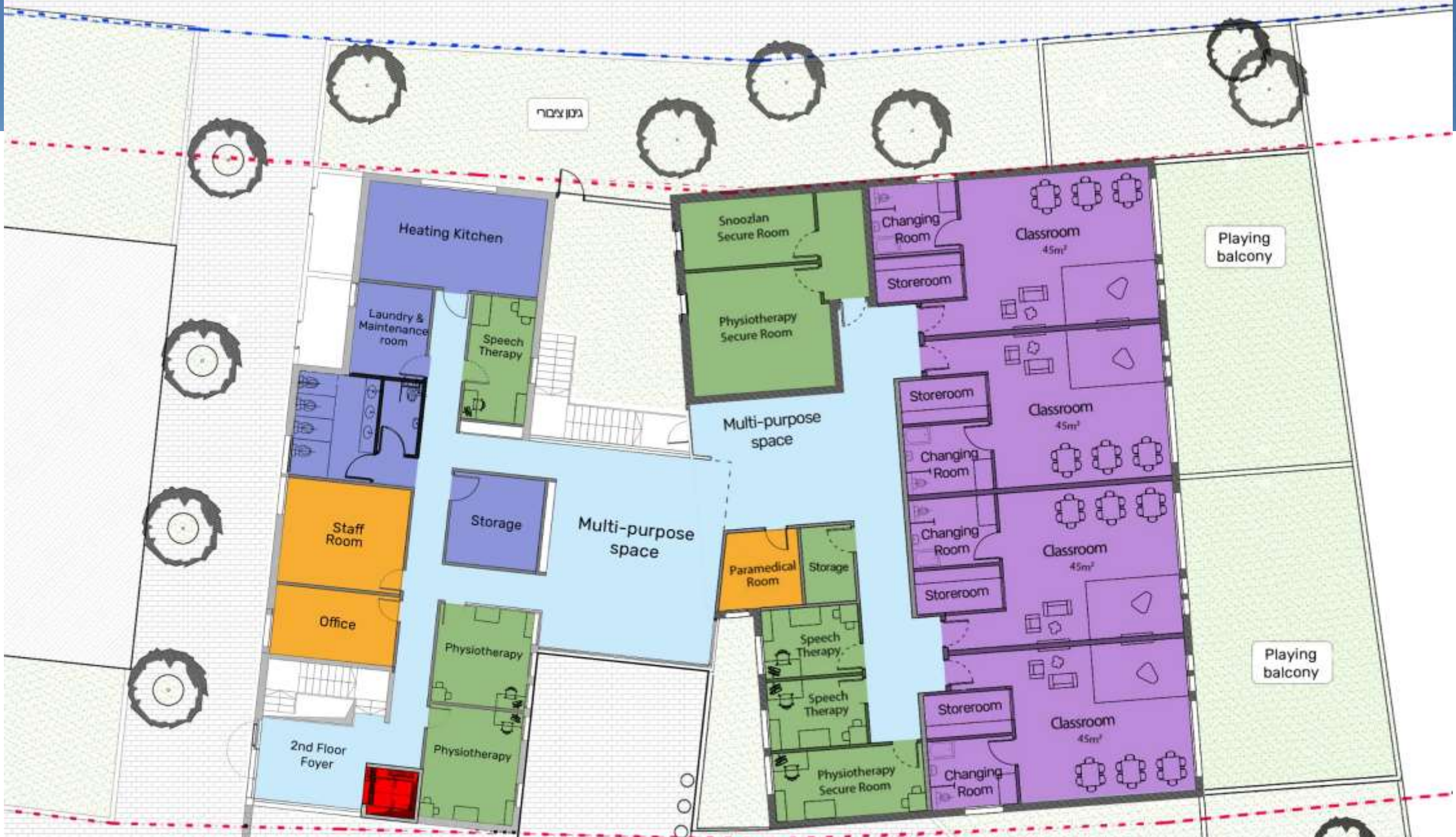
Reinforced building

- Latest safety features
- Protects against rockets
- Provides peace of mind

GROUND FLOOR PLAN



CHIMES ISRAEL MARTIN J. WALDBAUM
REHABILITATIVE DAYCARE CENTER IN ASHKELON



CHIMES ISRAEL MARTIN J. WALDBAUM REHABILITATIVE DAYCARE CENTER IN ASHKELON

BUDGET

TOTAL COST WITH TWO FLOORS (80 CHILDREN)

Funding \$USD	Equipment	Building	Total
<i>Total cost</i>	\$674,847	\$3,966,232	\$4,641,079
National Insurance Institute	\$153,374	\$751,534	\$904,908
Martin J. Waldbaum and Friends		\$900,000	\$900,000
Ashkelon Municipality		\$328,180	\$328,180
Shalem Foundation	\$92,025		\$92,025
Irving Moskowitz Foundation		\$5,000	\$5,000
Perl & Lampner Families		\$50,000	\$50,000
<i>Total expected revenue</i>	\$245,399	\$2,034,714	\$2,280,113
<i>Funding required for completion</i>	\$429,448	\$1,931,518	\$2,360,966



THE CHIMES ISRAEL MARTIN J. WALDBAUM REHABILITATIVE DAYCARE CENTER

ENDOWMENT FUND GIVING LEVELS FOR THE GROUND FLOOR

Playground \$90K	By:					
Classroom \$72K	By: Adam Walbaum	Malinsky Family	In Memory of Bernica & Ira Waldbaum & Randy Malinsky	Nancy Waldbaum Family		
Therapy Room \$36K	By:					
Diamond \$18K	By:					
Gold \$9K	By:					
Silver \$1.8K	By:					

THE CHIMES ISRAEL MARTIN J. WALDBAUM REHABILITATIVE DAYCARE CENTER

ENDOWMENT FUND GIVING LEVELS FOR SECOND FLOOR

Play Balcony

\$90K

By:

Classroom

\$72K

By:

Therapy Room

\$36K

By:

Diamond

\$18K

By:

Gold

\$9K

By:

Silver

\$1.8K

By:

PROJECT PARTNERS

משרד העבודה הרווחה
והשירותים החברתיים
חוסן חברתי לישראל
Ministry of Labor, Social Affairs and Social Services



מדינת ישראל
משרד הבריאות
Ministry of Health Israel



Municipality of Ashkelon



CHIMES ISRAEL
Promoting and Integrating People with
Special Needs into the Community



The Shalem Fund
The Development of Modern Services for
People with Special Needs
מגמת שאלם
מקדמת ויוזמת שירותים מודרניים
לבעלי צרכים מיוחדים



המוסד לביטוח לאומי
National Insurance Institute of Israel



The Martin J. Waldbaum
Rehabilitative Daycare Center

