



## **The Branch Foundation**

*Supporting sustainable community development in  
South-East Asia*

### **Organisational Profile**

Date last updated: October 2011

#### **Basic Organisation details:**

Registration number: CC20996 (NZ)

Email: [info@thebranchfoundation.org](mailto:info@thebranchfoundation.org)

Website: [www.thebranchfoundation.org](http://www.thebranchfoundation.org)

Phone in Thailand: +66(0)844268671

Phone in New Zealand: + 64(0)210424910

Skype: ionaproebst

## **Organisational History:**

The Branch Foundation was founded in July 2007. We are a small yet highly motivated and passionate New Zealand based not-for-profit international organisation. As an International fundraiser, we support local organisations to provide aid and financial assistance for ethnic minorities, refugees, and underprivileged people. We work with organisations that are outside the scope of main humanitarian aid and support communities that otherwise would get little or no support. The community members of our partner organisations work with us to establish their most urgent needs. They are the agents of change, that strive for quality of well being, independence and stability; we simply support their quest for a brighter future. Our strategic goals on welfare/poverty relief, sustainable community development and education, with the long-term objective of self-reliance, are the focus of our work with our partner organisations. We pride ourselves for being accountable and transparent. TBF opened an office in Chiang Mai, Thailand in July 2011, and most operations and logistics are administered from there.

## **Organisations Mission and Goals:**

### **Our Mission**

The Branch Foundation is a fundraising body working for grassroots organisations in South-East Asia. As an international fundraiser, The Branch Foundation enables local organisations particularly in Thailand to provide aid for those who have fled ethnic conflict in Burma. The main focus of The Branch Foundation is to provide financial and logistical support to organisations working primarily with children displaced due to conflict. In accordance with the United Nations Millennium Development Goals, education, social well-being and health are at the forefront of The Branch Foundation's development priorities.

### **Our Vision**

The Branch Foundation is dedicated to supporting ethnic minority, refugees and displaced peoples to improve their lives and enrich their communities.

### **We work together with our partners**

During our next planning period between 2010- 2016 we will work with our partners to challenge poverty and injustice and to achieve positive change in the following areas

- Welfare & poverty relief
- Economic & sustainable community development
- Education

### **Welfare & Poverty Relief**

Our goal: To help develop communities to be self-reliant, independent and free from human rights violations, violence and fear

### **Together with our partners we...**

- Work for people's basic needs to be met in health, shelter, food and security
- Support people to be empowered, independent and for their voices to be heard
- Promote gender equality and women in leadership roles

### **Economic & Sustainable Community Development**

Our goal: To promote and support income generating and income saving activities.

### Together with our partners we will help communities...

- To work towards self reliance and away from aid dependency
- To establish income generating opportunities
- To protect and work on environmentally responsible and sustainable community development

### Education

Our goal: To increase education levels among refugees and ethnic minority groups.

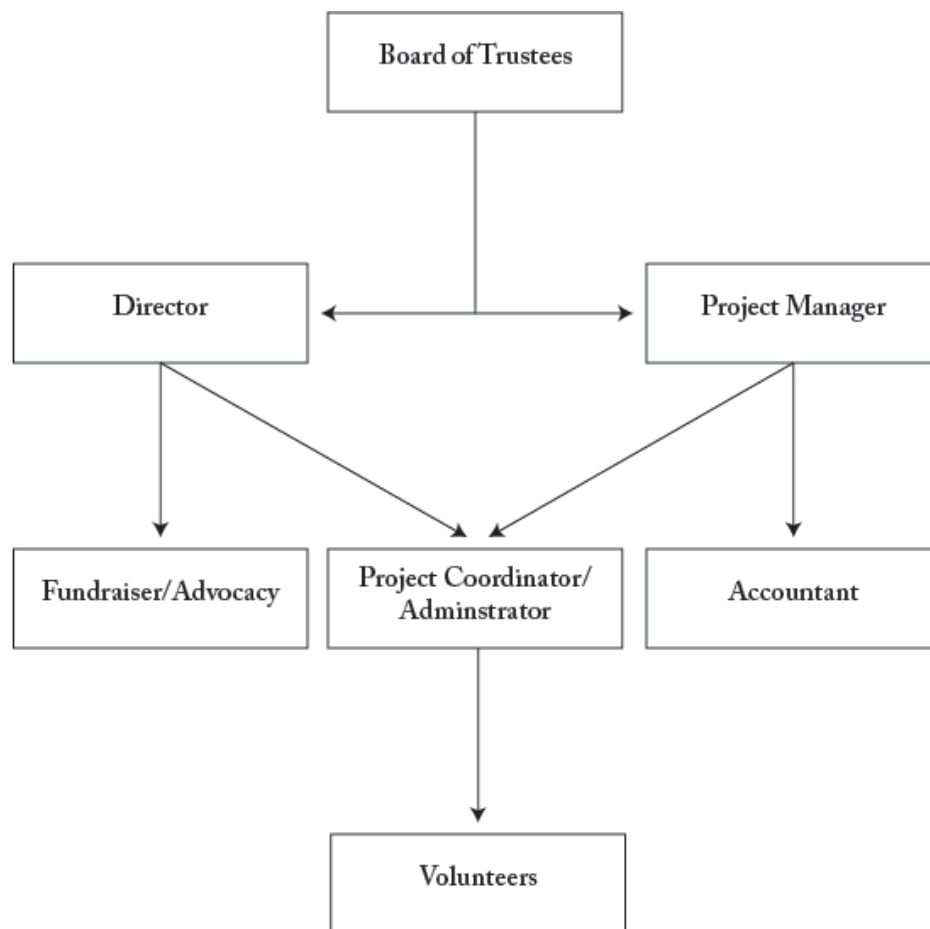
### Together with our partners we...

- Work towards increasing the educational opportunities available in the communities we work in, enabling people to attend schools, English classes and Universities.
- Support the opportunity for everyone to learn English

### Map of target area:



## Organisational chart:



## Programmes/Projects:

### Sangklaburi Child Protection Project:

Funder: Gypsy Tea Rooms + General funding pool

### Welfare & Poverty Relief

- Food relief, until the family is self reliant and stable
- Medical relief one off emergency situations, and small regular visits
- Food assistance for family
- Education for children, children attend school and are supported for uniforms, books etc.
- Income generation through weaving training and support

## **Shan Refugee Camp:**

Funder: General funding pool + Six Senses

### **Education- TBF/ Tara Education Centre outreach education project.**

- Computer teacher stipend
- School Uniform support
- School bus relief funding
- GED higher education support

### **Economic & Sustainable Community Development**

- Solar Panels
- Toilets
- Mushroom farming
- Income generation- Weaving centre support and development

### **Poverty Relief & Welfare**

- Food Aid
- Hygiene and medical relief
- Basic living costs for Grandma and Grandpa

## **TBF/ Tara Education Centre:**

Funder: Tara Internet Business

### **TBF-Tara Office/Education Centre (In-house Programs):**

- **Educational Training:** Vocational English
- **Workshops/Internships:** Research & Advocacy, Organisational Development, Office Management & Administration
- **Life Skills:** Personal Organisation, Motivation, Confidence Building
- **Personal Support:** Education/Career Development, CV writing, Scholarship Applications, Mentoring

### **Vocational Training/Internships:**

- Vocational Training/Internships: Salon, Mechanics, House Keeping
- Internships: Internships related to vocational training mentioned above

### **Outreach Programs:**

- Teacher coordination, support and stipends
- Sustainable Income Generation development and support
- GED programme development in the Shan Camp

### **Refugee Services New Zealand:**

- The Branch Foundation supports the refugee community in New Zealand by supporting the work of Refugee Services New Zealand through a monthly donation.
- Collaboration on supporting Refugees immigrating to New Zealand from South East-Asia.

***Note:** Laos and Cambodia- New partnerships/projects to develop over the next 3 years and are currently in the research phase. Please see the Timeline at the end of this document.*

### **Donors:**

<b>Donor</b>	<b>Programme they support</b>
Gypsy Tea Rooms	Sangklaburi Child Protection Project
General donations	Shan Refugee Camp
Tara Internet Business	TBF/ Tara Education Centre
?	GED project Shan Camp

### **Organisational needs:**

Additional long term funding.

Capacity building of TBF in terms of human resources and funding.

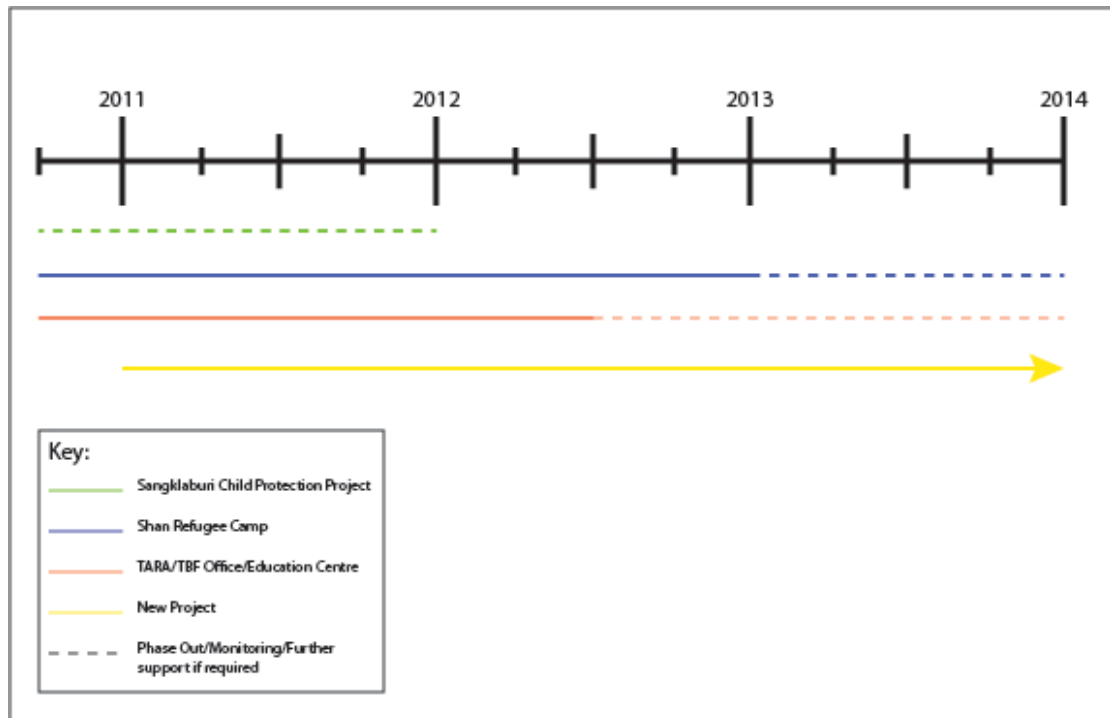
## Coordination and communication:

Thailand- Local NGO's, CBO's and International Organisations.

Asia- Increased networking with organisations with similar focus areas to TBF.

New Zealand- Networking with Refugee Support organisations. EG, Refugee Services NZ.

## Timeline:





**Key Contacts:**

Name: Iona Proebst

Position: Executive Director/ Chair Person

Email: [ionaproebst@thebranchfoundation.org](mailto:ionaproebst@thebranchfoundation.org)

Name: Brigitte Lorenz

Position: Trustee

Email: [BLorenz@xtra.co.nz](mailto:BLorenz@xtra.co.nz)

Name: Annabel Harrison

Position: Trustee

Email: [tsering\\_99@yahoo.com](mailto:tsering_99@yahoo.com)

Name: Tom Rosen

Position: Project Manager

Email: [tomrosen@thebranchfoundation.org](mailto:tomrosen@thebranchfoundation.org)

Name: Lorraine Bax

Position: Product and marketing consultant

Email: [lorraine.bax@gmail.com](mailto:lorraine.bax@gmail.com)